

Megan Lötter • Jacqui L'Ange • Marteli Kleyn

# Dieta tsa LEFOKOLODI

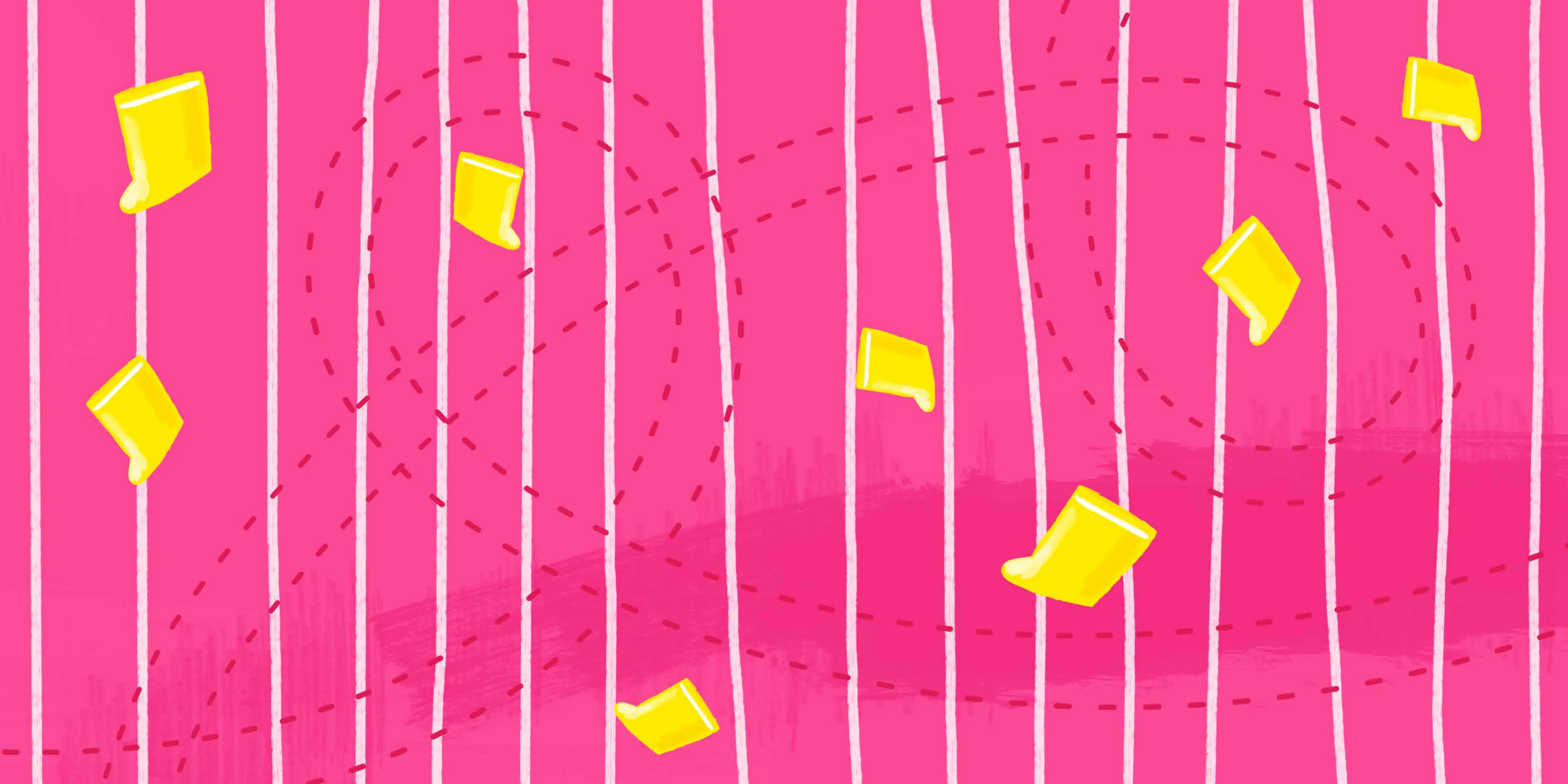


# Dieta tsa LEFOKOLODI

Buka ena ke ya

---







bookdash.org

Every child should own a hundred books by the age of five. To that end, Book Dash gathers creative volunteers to create new African storybooks that anyone can freely print, translate and distribute. Then we work with partners to give those books to preschool children to own.

To find out more, and to download beautiful, open-licensed, print-ready books, visit [bookdash.org](http://bookdash.org).

*Dieta tsa Lefokolodi*

*(Shongololo's Shoes)*

Illustrated by Megan Lötter

Written by Jacqui L'Ange

Designed by Marteli Kleya

Translated by Nalibali

with the help of the Book Dash participants in Cape Town on 5 March 2016.

ISBN: 978-1-77632-549-8

Typeset in Eryx Rennie Macintosh and Shadows Into Light

**This work is licensed under a Creative Commons Attribution 4.0 Licence**  
(<http://creativecommons.org/licenses/by/4.0/>).

You are free to share (copy and redistribute the material in any medium or format) and adapt (remix, transform, and build upon the material) this work for any purpose, even commercially. The licensor cannot revoke these freedoms as long as you follow the following license terms:

You must give appropriate credit, provide a link to the license, and indicate if changes were made. You may do so in any reasonable manner, but not in any way that suggests the licensor endorses you or your use. No additional restrictions: You may not apply legal terms or technological measures that legally restrict others from doing anything the license permits.





Dieta tsa ka kaofela di kae?  
Ke a tseba hore ke di siile mona!



Ha ke esō bone dieta tsa hao.  
Tsa mo botsa Kgofu.





Ha ho dieta mona.  
Tsa mo botsa Thuhlo.





Ke tatile.  
Tsa mo botsa Senqanqane.





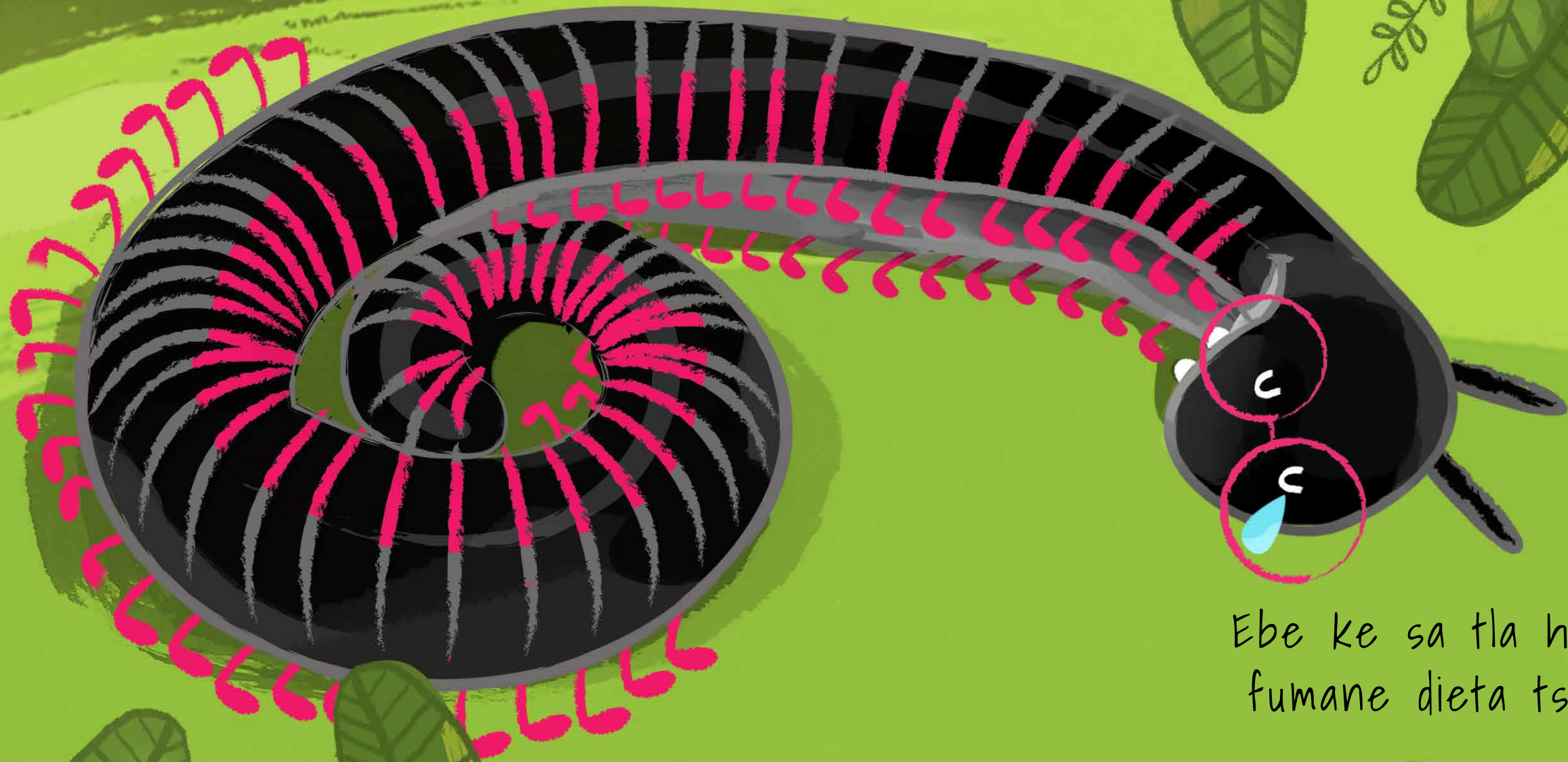
Dieta? Tse kae?  
Tsa mo botsa  
Mamolangwane.





Ha ke eso bone  
dieta tsa hao?  
Tjhe, eseng nna.





Ebe ke sa tla hlola ke  
fumane dieta tsa ka?





Dieta, he?  
O lokela ho botsa ditshwene.






Re maphathephathe mona.  
Tsa mo botsa Sephoko.  
O tseba tsohle!

Dumela,  
dumela!



An illustration of a grey owl with large red-rimmed glasses sitting on a brown tree branch. The owl is holding an open yellow book with its feet. To the left of the owl is a large, dark brown, bowl-shaped nest. To the right of the owl is a yellow pencil holder containing several colored pencils and a ruler. The background is a bright blue sky with stylized green leaves and ferns hanging from the top and bottom edges of the frame.

Hmm. Ke nahanne ho hong.  
Hobaneng o sa ilo botsa Tau?





Tsee ke tsa hao?  
Ke tla o fa tsona kaofela  
ha o ka tla mocketjaneng  
wa ka!







