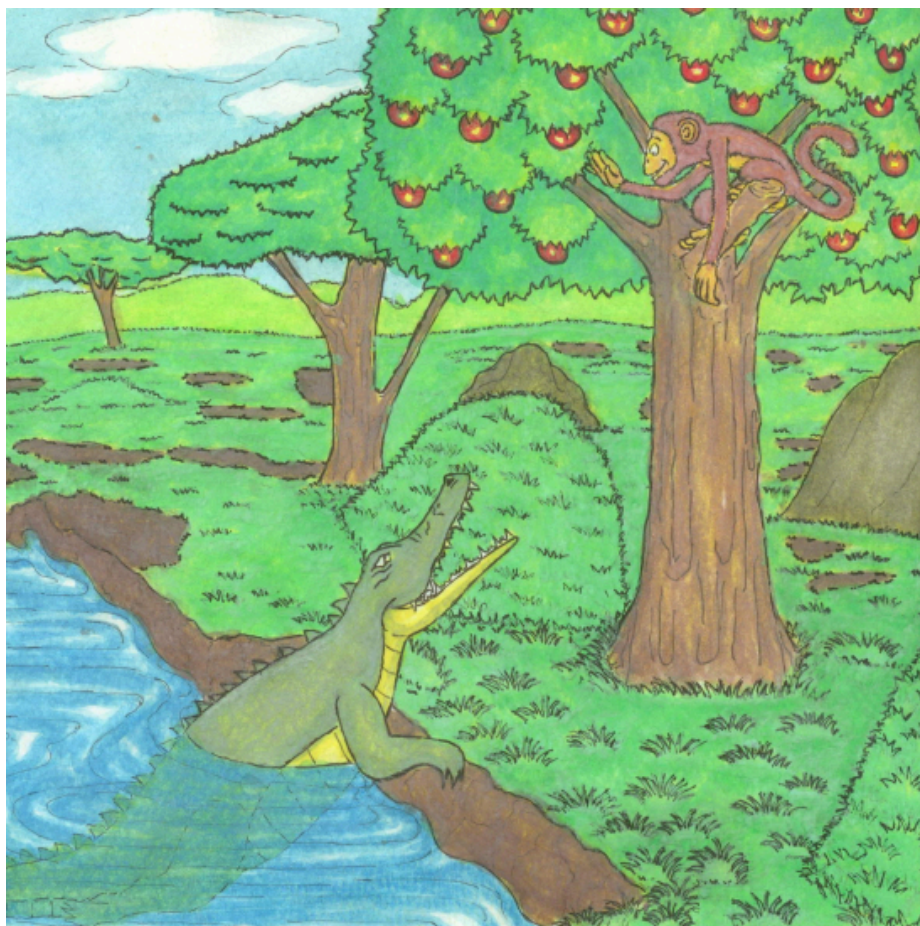




Ngweṅa na Ṱhoho vho vha vhe khonani

Ntombikayise Malaza
Sibusiso Khumalo





Ngweṅa na Ṱhoho vho vha vhe khonani khulu.

Ngweṅa o vha a tshi dzula mulamboni.

Ṱhoho o vha a tshi dzula murini u re tsini na mulambo.



Ngweṅa o vha a tshi ḽa khovhe dzi re
mulamboni. Ṱhoho a tshi ḽa mitshele i re murini.



Nwana wa Ngweṅa o vha a tshi khou lwala nga maanḁa.

Makhulu wa Ngweṅa vha ri, “Tshivhindi tsha ṭhoho ndi tshone fhedzi tshine tsha ḡo mu fhodza.”



Ngweṅa a ramba Ṱhoho muḡini wawe u re mulamboni.

Ngweṅa a amba uri u ḡo beba Ṱhoho muṭanani.



Musi Ngweṅa a tshi khou tala, a vhudza ṭhoho nga ha ṛwana wawe ane a khou lwala.

“Ndi tshivhindi tsha ṭhoho fhedzi tshine tsha ḡo mu fhodza,” hu amba Ngweṅa o ṭungufhala.



“Wo vha wo fanela wo mmbudza ri sa athu takuwa!” hu amba Thoho.

“Ndi vhea tshivhindi tshanga murini, kha ri humele murahu ri ye u tshi dzhia,” hu amba Thoho.



Ngweṅa a humela murahu.

Ṱhoho a tsa muṱanani a gidimela murini.

Ngweṅa a lindela.



Ngwen̩a a lindela tshifhinga tshilapfu fhedzi
Ṱhoho a si vhuye.



Ulwazi Lwethu is a Zenex Foundation funded and initiated project to develop a series of graded and leisure African language readers and teacher support materials. This project is targeted at teaching and supporting learners in the Foundation Phase to improve their home language reading and understanding. The readers have been originated in nine African languages in collaboration with Molteno Institute for Language and Literacies, Nelson Mandela Institute for Education and Rural Development, Room to Read South Africa, and Saide. All resources are developed as Open Education Resources (OER).



basic education

Department:
Basic Education
REPUBLIC OF SOUTH AFRICA

*The Ulwazi Lwethu readers and storybooks have
been quality assured and approved by DBE.*

Your attribution should include the following:

Title: Ngwen̄a na ̄hohō vho vha vhe khonani

Author/s: Ntombikayise Malaza

Translator/s: Tshedza Tlhako

Illustrator/s: Sibusiso Khumalo

Assurer/s: Doris Manyamalala

Language: Tshivenda



© Zenex Foundation - Saide 2025 (Updated Edition)

CC BY includes the following elements:

BY – Credit must be given to the creator

