



Kuphepha ku-inthanethi

Patricia Ndlovu

Sibusiso Khumalo





I-inthanethi ikunika litfuba lekutsi ufundze, udlale imidlalo, utsenge kanye nekutsi ukhulume nebangani bakho njengoba ukwenta malanga onkhe ekuphila kwakho.

Ingaphindze futsi ibe yindzawo leyingoti kubantfwana.

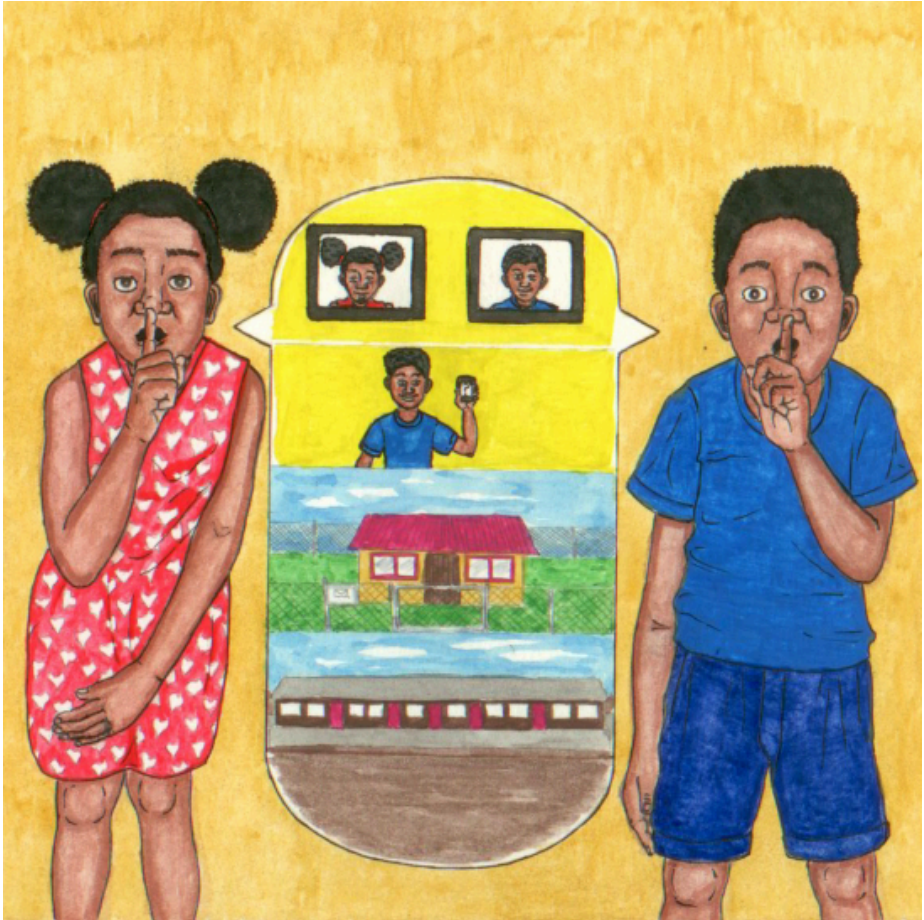
Loku kungenca yekutsi kunebantfu lasebentisa i-inthanethi ngetizatfu letimbi.



Naba labanye bantfu lababi labasebentisa i-inthanethi:

- Tigebengu ntjontja imininingwane letinye tintjontje imininingwane yakho sicu.
- Basusi beluchuku labaye bakuhluphe, bakuhlazise, nobe bakuphoce.
- Bantfu labakhohlakele labakha bungani nawe ku-inthanethi, ngenhloso yekukhulukubeta.

Utawufundza kabanti ngaloku emakhasini lambalwa lalandzelako.



Kute uphephe kumasela lantjontja iminingwane, akukafanele wabelane ngaleminingwane yakho sicu nalabanye ku-inthanethi:

- Libito lakho mbamba.
- Tinombolo telucingo.
- Likheli lasekhaya.
- Iminingwane lemayelana nemndeneni wakho.
- Kutsi ufundza kusiphi sikolo.

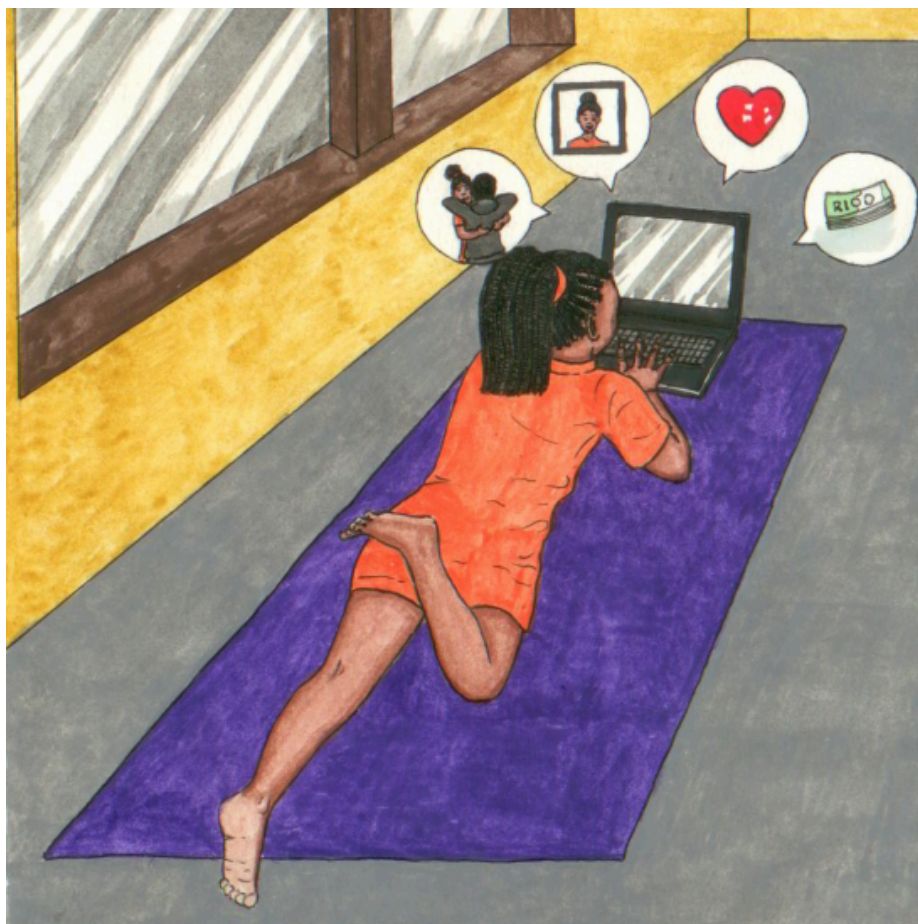
Leminingwane yenta kube lula ngemasela lantjontja iminingwane kutsi angatenta wena ku-inthanethi.



Umsusi weluchuku ku-inthanethi ngumuntu lowenta loku:

- Wabelana futsi aphoste tintfo letimbi ngawe.
- Ngulokuphatsa kabi.
- Ngulose tinkhundleni tekuchumana, tekuceketsa kanye nakuma-imeyli.

Tjela umuntu lometsembako nangabe ukhatsatekile ngekuchukulutwa ekuphileni kwangempela noma ku-inthanethi.



Bantfu labakhohlakele ku-inthanethi kuvame kutsi kube bantfu labadzala. Kungenteka betame:

- Kutfola yonkhe intfo ngawe.
- Bakhe buhlobo nawe kute utobetsemba.
- Babonakale babahle, banemusa, futsi banakekelana.
- Bacele sitfombe sakho.
- Bakuncenge kutsi wente tintfo letinebungoti.

Caphela kutsi uchumana nabobani ku-inthanethi.



Ku-inthanethi asitfoli bantfu lababi kuphela. Kukhona futsi nelwati lolungemanga naloluyingoti.

Ungaboyetsemba yonkhe intfo loyifundza ku-inthanethi kutsi iliciniso.

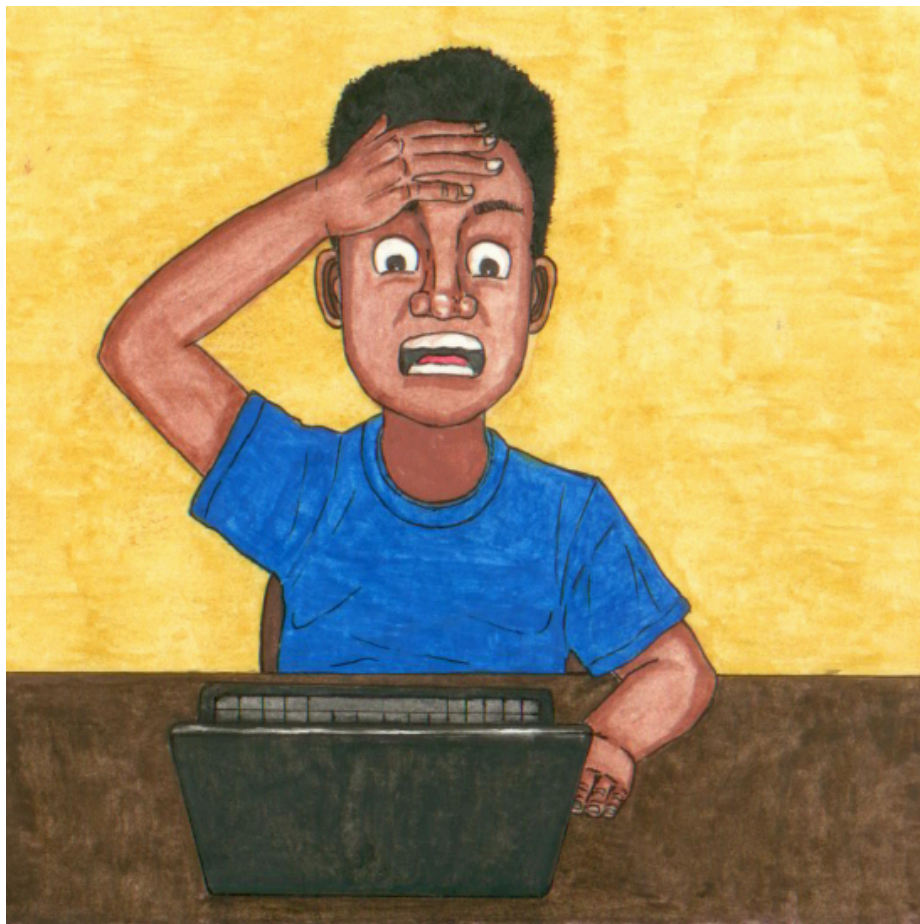
Cela umtali nobe thishela kutsi akusite uhlole kutsi lwati loluku-inthanethi luliciniso yini nobe lungemanga.



Ngesikhatsi usebenta ku-inthanethi:

- Bani nesibopho.
- Bani nenhlonipho.
- Caphela.

Nangabe wenta konkhe loku, utawuphepha ku-inthanethi.



Nangabe ufaka lwati kanye netitfombe ku-inthanethi unesibopho lesiphelele saloko lokufakile.

Cabangisisa kahle ngembi kwekufaka nobe yini.

Lwati nobe titfombe lotifakako tingasetjentiselwa kumelana nawe nobe nemndeni wakho.

I-inthanethi akwenteki ikukhohlwe loke wakufaka kuyo, ngisho noma sewukususile.



Tihloniphe wena kanye nalabanye basebentisi be-inthanethi: ngaloko lokushoko, ngaloko lokufakako, kanye nangaloko lokwentako.

Ungabi nemahloni ekutjela batali bakho ngayo yonkhe intfo leyentekako ku-inthanethi, nobe ngebantfu lohlangana nabo ku-inthanethi.



Caphela ngaso sonkhe sikhathi nangabe uku-inthanethi. Akusiye wonkhe umuntfu lobonakala angumngani wakho longumngani wakho sibili.

Sebentisa lwati lolukulencwadzi kute lukuvikele uhlale uphephile ku-inthanethi.

—Imibuto

1. Shano tintfo letimbili longatenta ku-inthanethi.
2. Shano tinhlobo letintsatfu tebantfu labenta tintfo letimbi ku-inthanethi.
3. Kungani kubalulekile kutsi ucele umuntfu lomdzala akusite nangabe usebentisa i-inthanethi?
4. Bhala phansi tintfo letimbili lokungakafaneli wabelane ngato ku-inthanethi.
5. Yini lokufanele uyente nangabe utiva ungakaphephi ku-inthanethi?
6. Chaza tinhlobo letimbili tekwatiswa lokutfolakala ku-inthanethi lokungase kube kubi kuwe.
7. Akusibo bonkhe bantfu lababonakala babangani bakho labangibo sibili! Kusho kutsini loku?
8. Ungahlola njani kutsi kwatiswa lokufundza ku-inthanethi kuliciniso?

—

Lencwadzi ingulenywe yeluchungechunge lwetincwadzi letine letetfula tihloko tebuchwepheshe bangcondvomshini.

Lencwadzindzaba icanjelwe tintfo tekufundza tephrojekthi yeZenex Ulwazi Lwethu nga-2021.



Ulwazi Lwethu is a Zenex Foundation funded and initiated project to develop a series of graded and leisure African language readers and teacher support materials. This project is targeted at teaching and supporting learners in the Foundation Phase to improve their home language reading and understanding. The readers have been originated in nine African languages in collaboration with Molteno Institute for Language and Literacies, Nelson Mandela Institute for Education and Rural Development, Room to Read South Africa, and Saide. All resources are developed as Open Education Resources (OER).



basic education

Department:
Basic Education
REPUBLIC OF SOUTH AFRICA

The Ulwazi Lwethu readers and storybooks have been quality assured and approved by DBE.

Your attribution should include the following:

Title: Kuphepha ku-inthanethi

Author/s: Patricia Ndlovu

Translator/s: Mduduzi Benjie Shongwe

Illustrator/s: Sibusiso Khumalo


Assurer/s: Simangele Khoza

Language: Siswati



© Zenex Foundation - Saide 2025 (Updated Edition)

CC BY includes the following elements:

BY  - Credit must be given to the creator

