



Matsatsi a phomolo a Alina

Sponono Mahlangu

Khanyisa Masemola

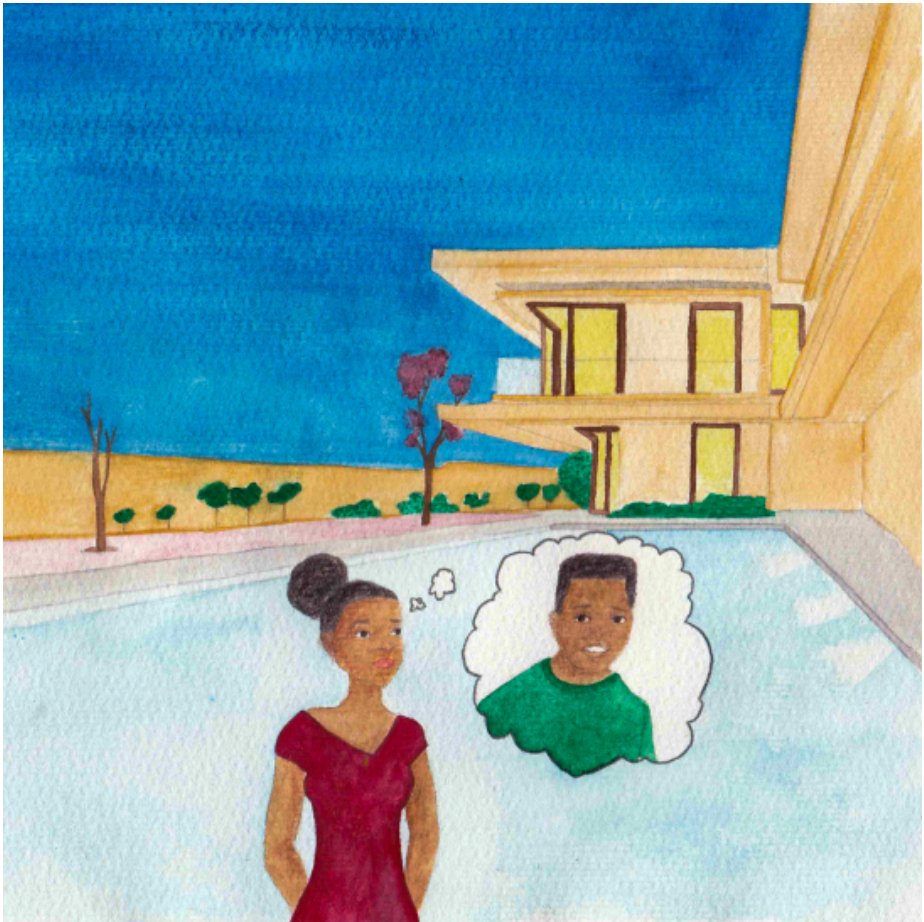




Toropong ya heso ho ne ho e na le mosadi wa morui ya bitswang Alina.

Alina o ne a dula ntlong e kgolo e komponeng e ntle.

O ne a atlehile haholo empa a se na thabo.



Ka tsatsi le leng Alina a potoloha komponeng eo ya hae.

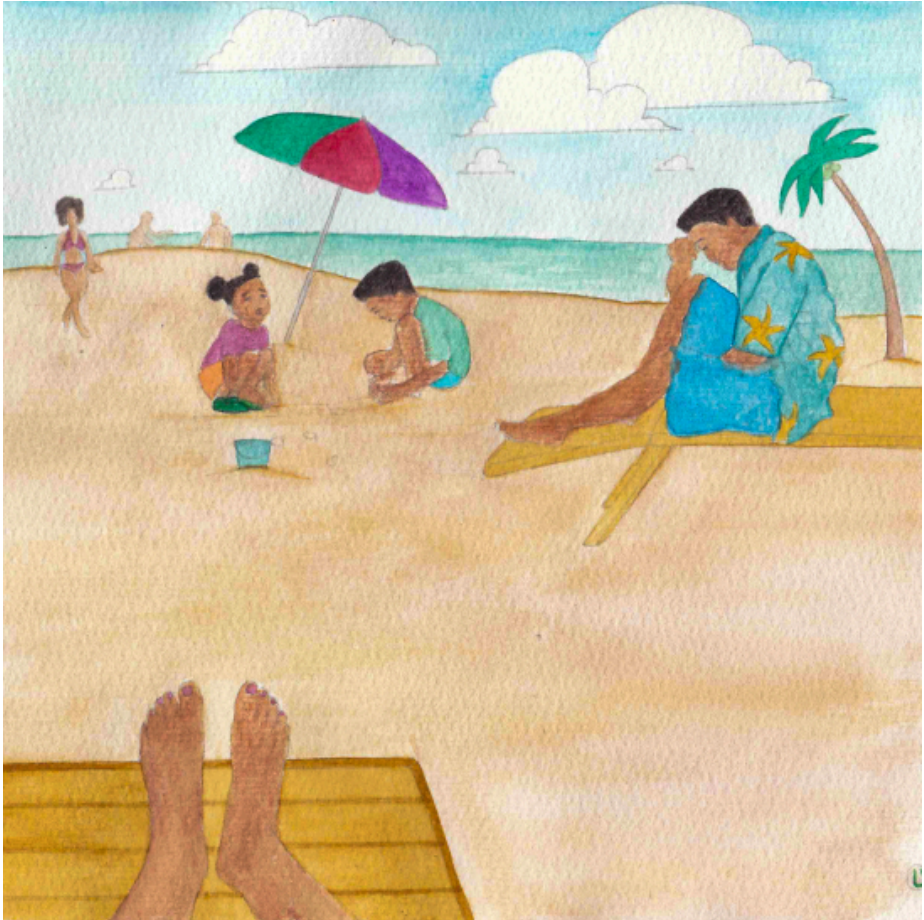
A bososela a nahana, “Ke lakatsa ho kopana le batho ba batjha. Mohlomong ke tla kopana le metswalle e metjha ha nka ya matsatsing a phomolo. Mohlomomg nka kopana le motho wa bohlokwa.”



Alina a rera ho ya phomolong lebopong la lewatle le letle ka ho fetisisa.

O ne a thabile ha letsatsi la hae la ho nka leeto le fihla.

A phakisa a iketla hoteleng ya hae le ho natefelwa ke phomolo tulong ena e ntle hakana.



Alina a kakalla lebopong a iketla. A boha batho ba mo potapotileng.

Kapelepele a eellwa monna ya neng a e na le bana ba babedi. Ba ne ba shebahala ba sa natefelwe ke ho ba moo.

Ba ne ba bonahala ba sa thaba. Bana ba ne ba bapala ba kgutsitse.



Alina a nahana, “Ekaba ke hobaneng ha ba hloname tjee tulong e ntle ha kale.”

Ha morao, ha a sesa letangwaneng la hotele, bana ba monna enwa ba tla sesa letangwaneng le bona.

Alina a qala ho qoqa le bona.



Mabitso a bana e ne e le Karemba le Kazungu.

Ba mmolella hore phomolo ena ke ya bona ya pele ka mora lefu la mmabona.

Ha Alina a kopana le ntata bana, a mmona mahlong bohloko boo a leng ho bona ka lefu la mosadi wa hae.

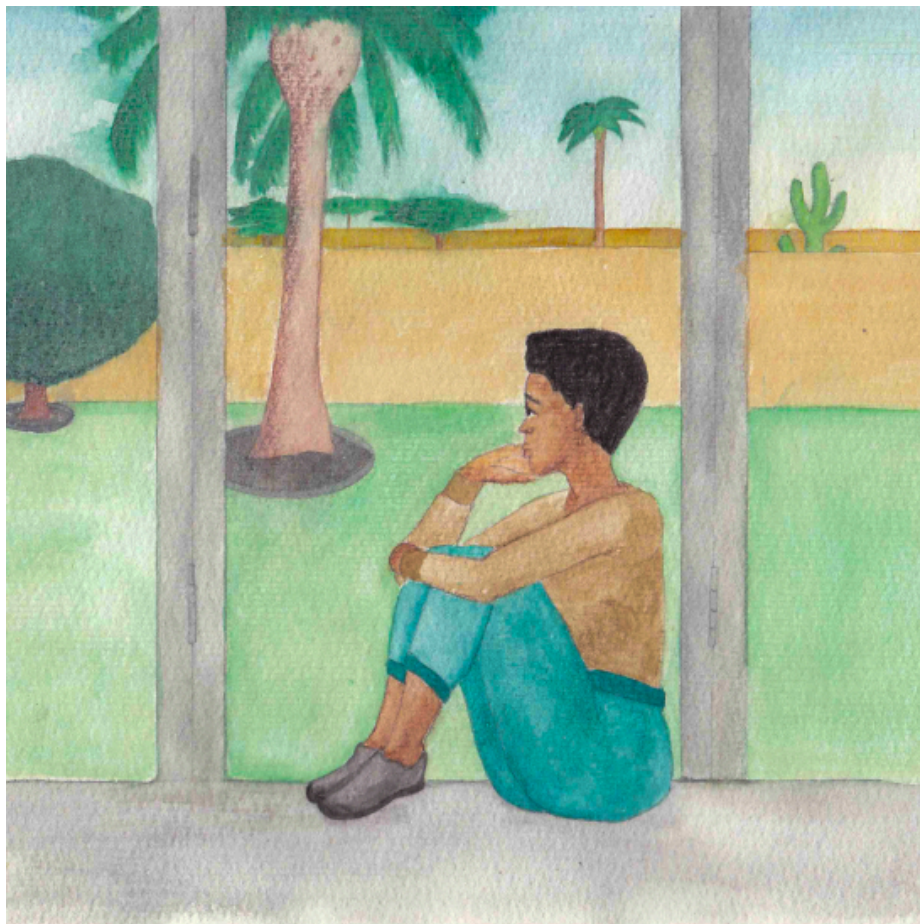
Lebitso la hae e ne e le Clemens.



Yaba Clemens, Alina le bana ba se ba hlola mmoho nako e kgolo.

Karemba le Kazungu ba natefelwa ke ho bapala le Alina lebopong.

Alina a ba ruta ho loha dimanki ka mahlaku a dipalema, le ho aha diqhobosheane ka santa.



Matsatsi a ya ha monate ho futhumetse.

Alina o ne a sa batle ho kgutlela komponeng ya hae e bodutu.

“Phomolo ya ka e se e tla fela.

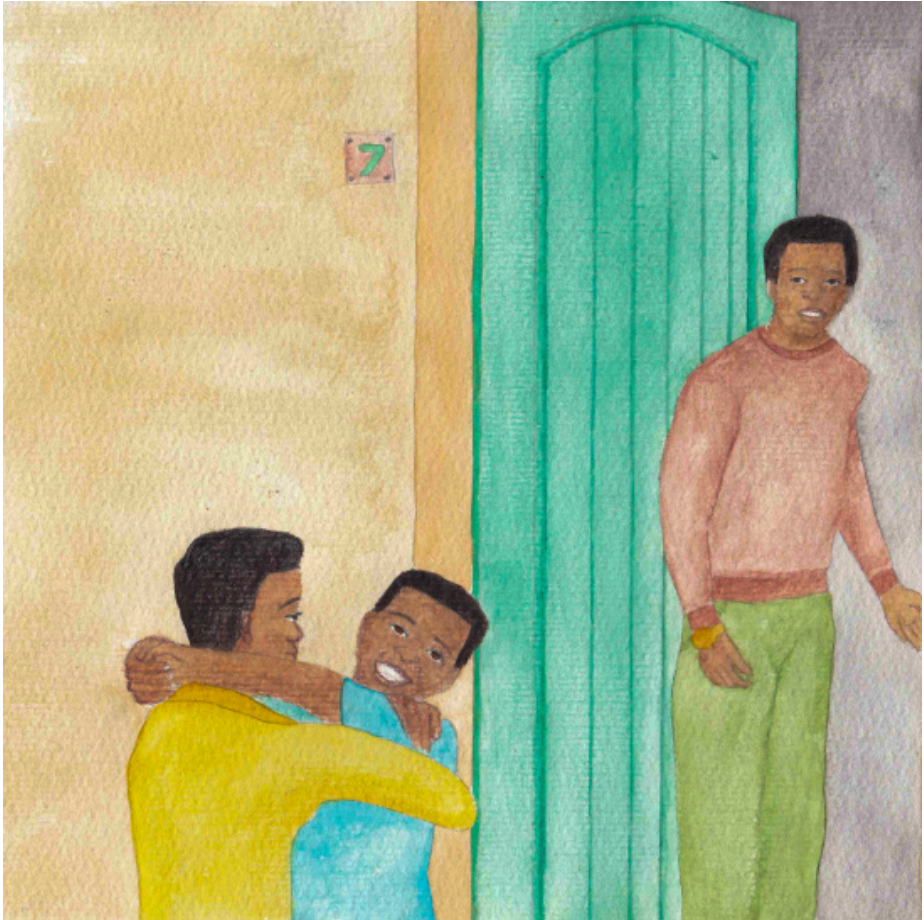
Mohlomong ha nka ka eketsa matsatsi, ha ke no hlonama hakana,” Alina a nahana.



Mantsiboyeng ao, Alina a utlwa motho a kokota lemating. Ha a bula lemati, a bona Karemo le Kazungu ba eme moo.

Ba bua hong, "Re batla hore o be mme wa rona!"

Alina a tsieleha hore o ba araba jwang.



Ha ba qeta ho bua, Alina a ya le Karemba le Kazungu kamoreng ya bona.

Clemens a bososela ha a bona bana ba thabetse ho ba le Alina. Alina a ba aka mme a ba sadisa hantle.

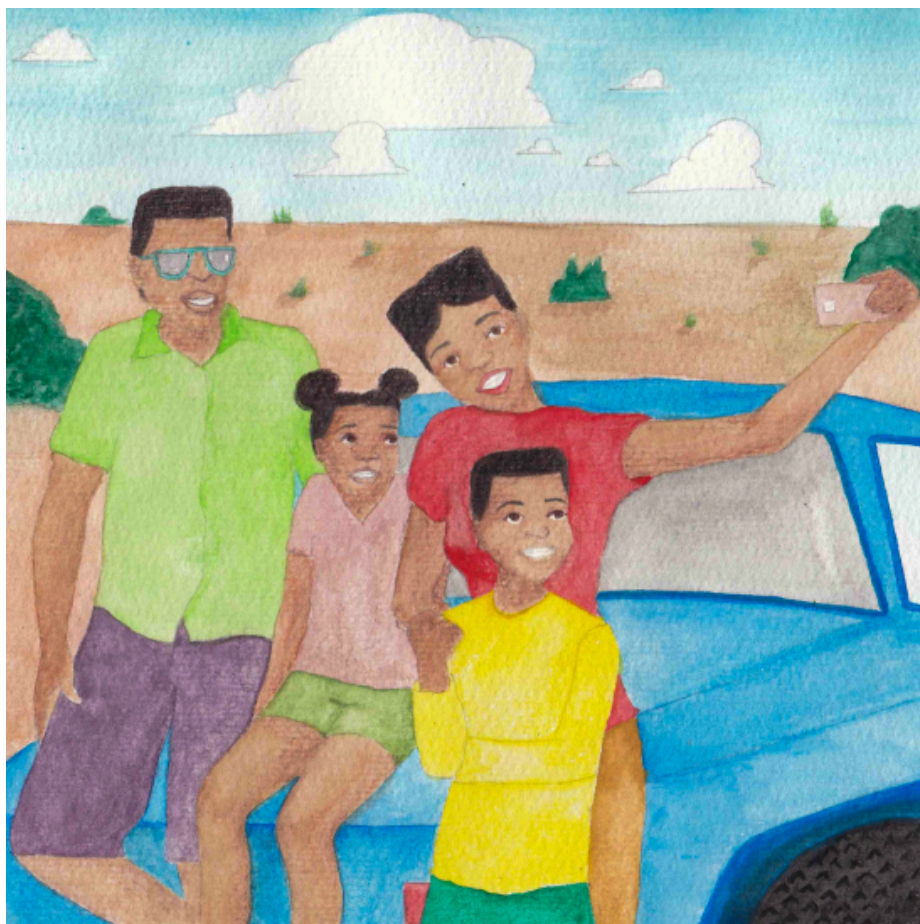
Alina a nahana a re, "Ke kopane le batho ba bararo ba bohlokwa."



Tsatsing le hlahlamang, Alina a ja dijo tsa hoseng le bona.

Karemba le Kazungu ba eba le tshepo ha Alina a dula le bona tafoleng.

“Ebe ho etsahalang?” ho botsa Clemens a bososela ha a bona tjebeho ya difahleho tsa bana ba hae.



Ka mora selemo, Clemens le Alina ba nyalana!

Selemo se seng le se seng, lelapa la tihakela lebopong le letle ho keteka mohlang ba neng ba kopona kgetlo la pele.

Ba bapala metsing, ba aha diqhobosheane, jwalo ka ha ba ne ba etsa ha ba kopana kgetlo la pele.



Ulwazi Lwethu is a Zenex Foundation funded and initiated project to develop a series of graded and leisure African language readers and teacher support materials. This project is targeted at teaching and supporting learners in the Foundation Phase to improve their home language reading and understanding. The readers have been originated in nine African languages in collaboration with Molteno Institute for Language and Literacies, Nelson Mandela Institute for Education and Rural Development, Room to Read South Africa, and Saide. All resources are developed as Open Education Resources (OER).



NELSON MANDELA
INSTITUTE FOR
EDUCATION AND
RURAL DEVELOPMENT



basic education

Department:
Basic Education
REPUBLIC OF SOUTH AFRICA

*The Ulwazi Lwethu readers and storybooks have
been quality assured and approved by DBE.*

Your attribution should include the following:

Title: Matsatsi a phomolo a Alina

Author/s: Sponono Mahlangu

Translator/s: Nthabiseng Tsatsi

Illustrator/s: Khanyisa Masemola


Assurer/s: Mathapelo Morake

Language: Sesotho (South Africa)



© Zenex Foundation - Saide 2025 (Updated Edition)

CC BY includes the following elements:

BY  - Credit must be given to the creator

