

Ĩno nĩ nyũmba yitũ.

1

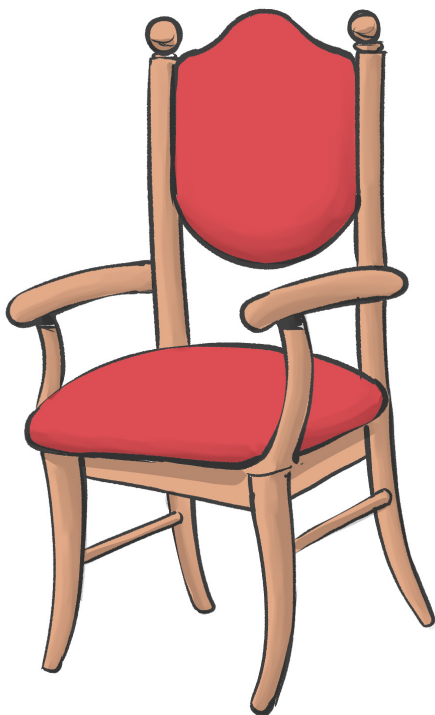




Kwitũ ve mũtĩ mũnene.

2

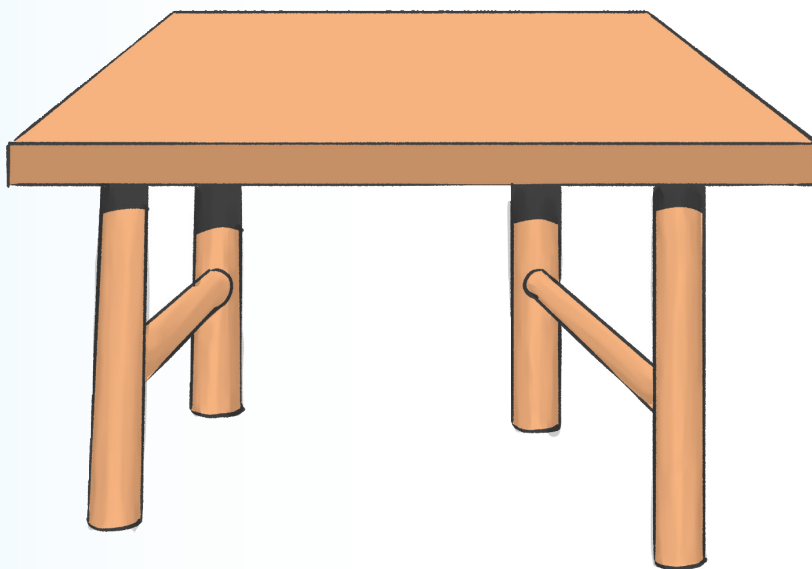




Kĩĩ nĩ kĩvĩla kya nau.

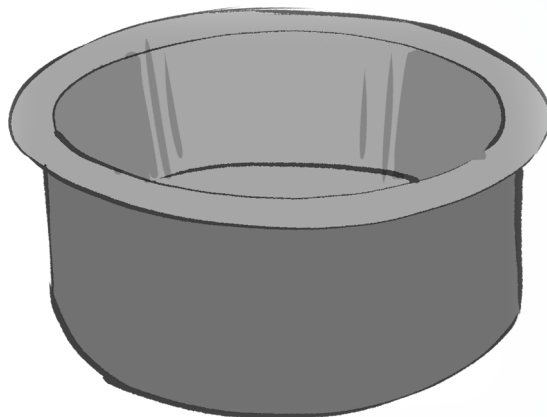
3





Mesa yitū nī nene.





Mwaitũ auaa ngima na ãsilia.

5

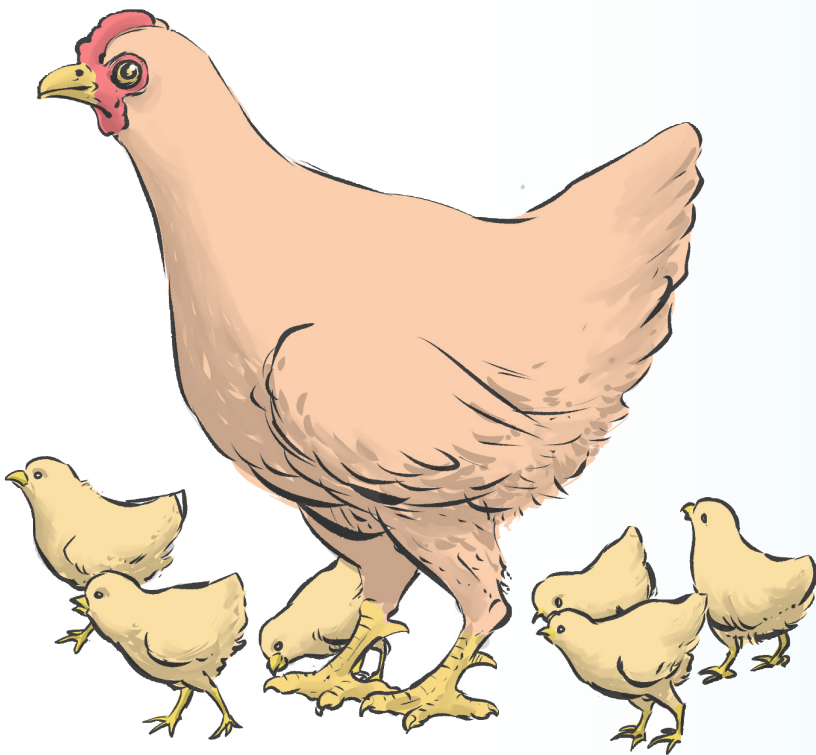




Kīkombe kīī nī kyanake.

6

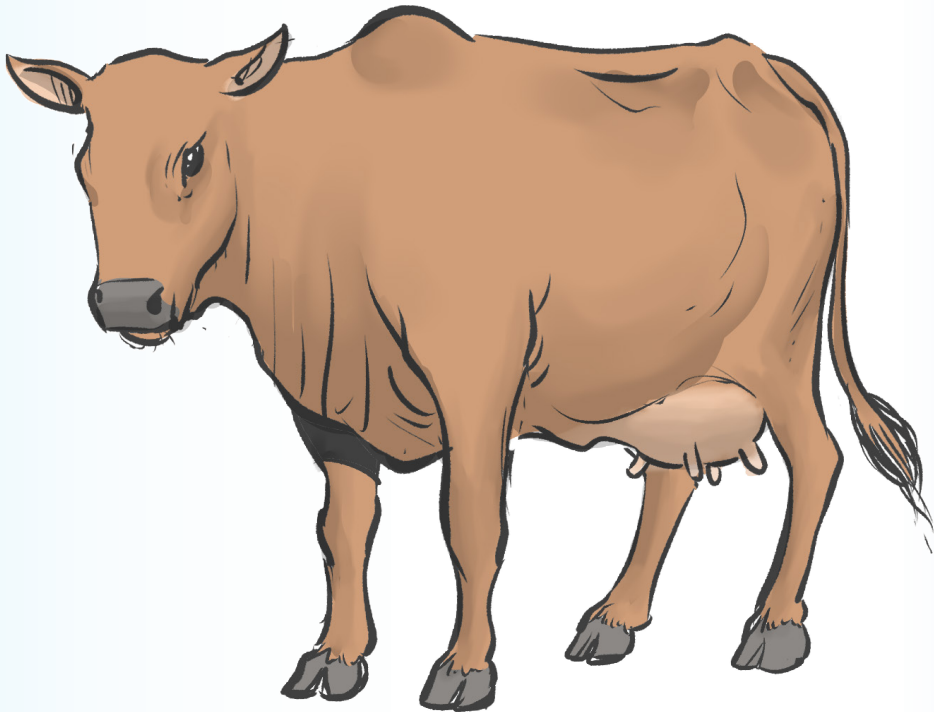




Ngūkū yīna tūswii

7





Ng'ombe ãtũnengae ãia.

8

