

Mūli nĩ ndelewa wa mbasi.

1

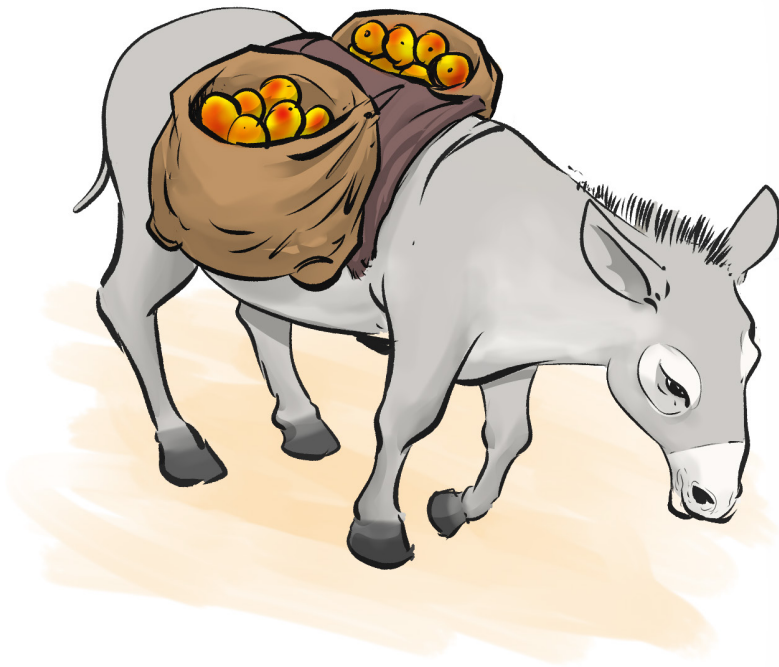




Ngalĩ ãĩ nĩ ya mwalimũ witũ.

2





Īng'oi yītūtheeasya kūkua  
mīio mīito

3





Kĩsululu kītũmĩawa kũkua  
andũ na mĩio mĩvũthũ.

4

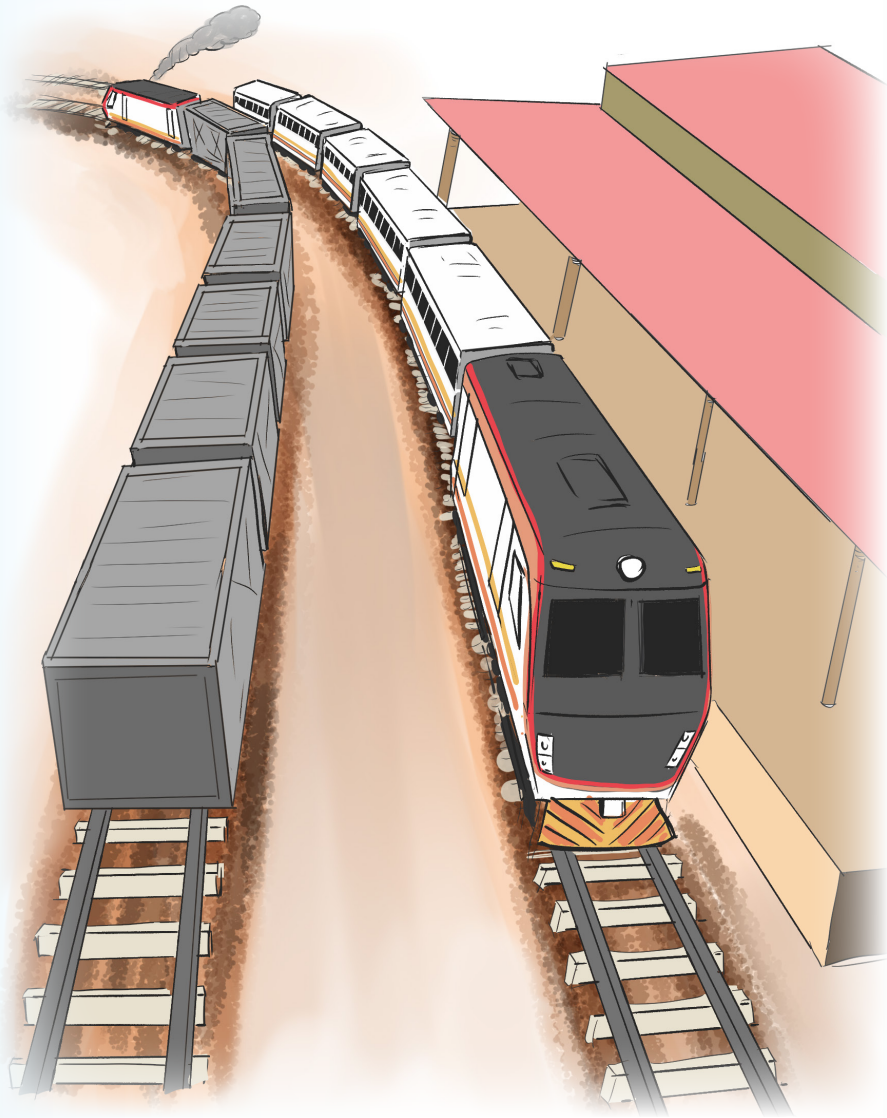




Īloli yītūmīawa kūkua mīio  
mīito.

5

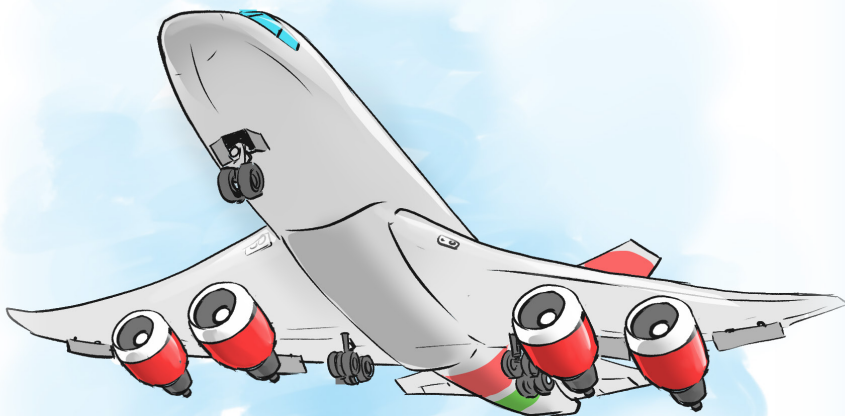




Ngalĩ ya mwaki yĩsĩlaa lelinĩ.

6





Ndeke yĩsĩlaa yayayanĩ.

7





Kamota katũmĩawa kũkua  
andũ.

8

