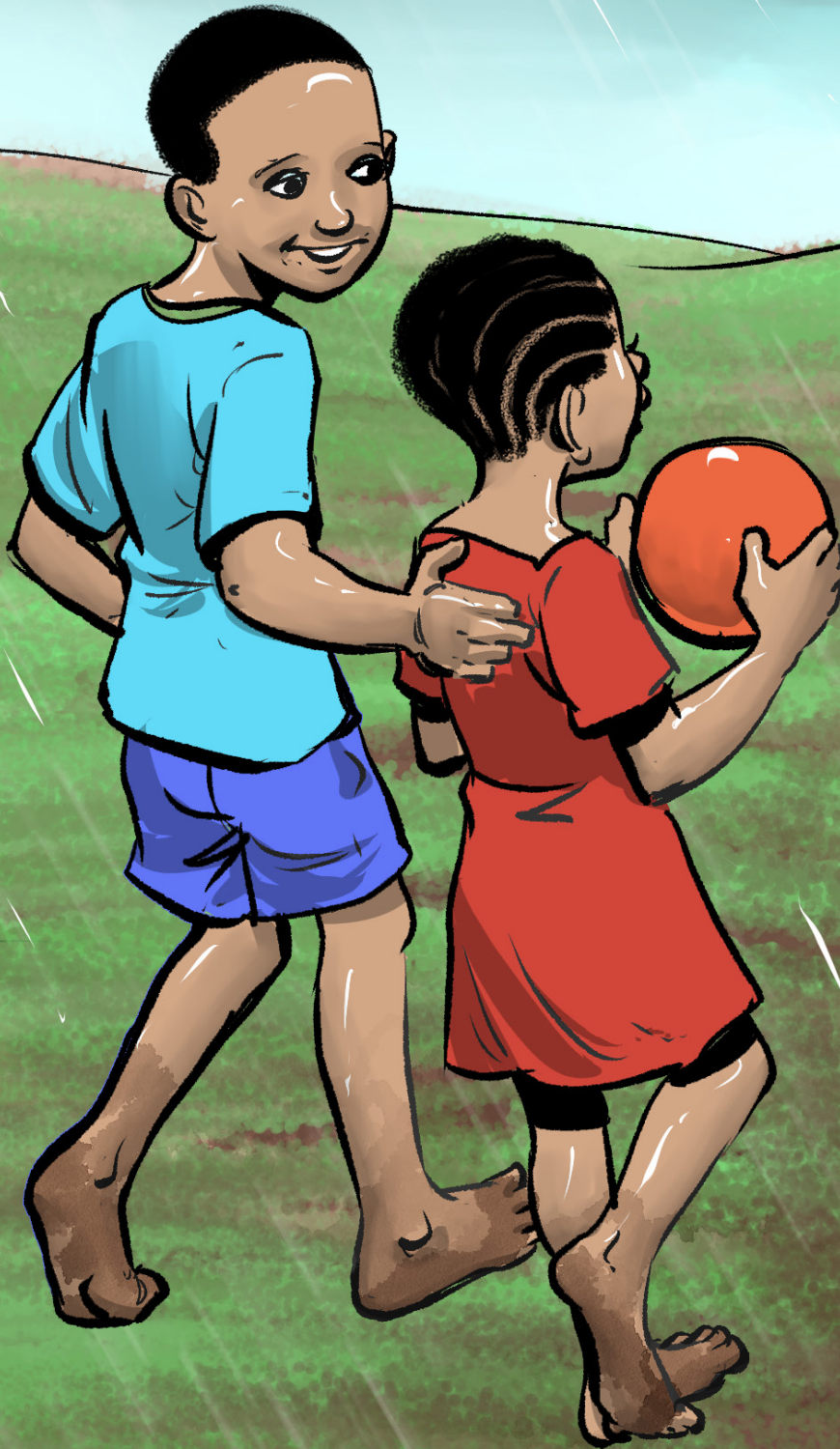


Aa nĩ Mũatha na Mbatha. Elĩ nĩ mũndũ na mwĩĩtu-a-  
iny'a. Mũatha nĩwe mũkũũ na Mbatha nĩwe mũnini.





Mũthenya ũmwe maithaũka nĩkwambĩie kua. Īndĩ

Mũatha na Mbatha maendee kũthaũka mbuanĩ.

Kavinda kanini mambĩia kũthekana.

Mbatha: Mũatha, Sati yaku yĩna wĩũ.

Mũatha: Ona yaku yĩna wĩũ.

Mbatha: Sati yaku yĩna kĩko.







Mũatha nĩwakũnie mũvĩla na atiũũka ndakanĩ.

Nĩwatheelile ĩvia. Kyaa kyake nĩkyaũmĩie na aĩna  
woo mwingĩ.







Mũatha nĩwambĩie kũĩa. “Nĩkyaũ kĩthũku?” Mbatha nĩwamũkũlilye. Mũatha amwĩa, “Nĩnatheela ĩvia na naũmĩa kyaa.” Mbatha nĩwasembie nyũmba kũtavya iny’a woo.





Mwaitũ: Nĩwaũmĩa mwana wakwa?

Mũatha: Īĩ nĩnaũmĩa kũũ.

Mwaitũ: Nĩ vole mwana, nĩ kyaũ kyekĩka?

Mũatha: Natheela ĩvia na kyaa kya kũũ kyaũmĩa.







Mbatha: Tũthi nyũmba.

Mwaitũ: Nũũvoa mwana wakwa.

Mbatha na mwaitũ nĩmamũtetheesye Mũatha kũthi  
nyũmba.







Kũũ kwa Mũatha nĩkwaimbie.

Mwaitũ: No mũvaka tũthi sivitalĩ.

Mbatha: Nĩngũthi nenyu.







Mwaitũ na Mbatha nĩmamũtwaie Mũatha sivitalĩ yĩ  
vakuvĩ na mũsyĩ. Nĩmaendie na maaũ.

Mwaitũ na Mbatha maĩna kyeva.







Mũatha nĩweew'aa woo kyaanĩ.

Ndakĩtalĩ: Wĩkie ata?

Mũatha: Nĩtheelile ĩvia.

Ndakĩtalĩ: Nĩ vole, nũkwĩw'a nesa.





Ndakĩtalĩ nĩwamũsiisye Mũatha kũũ. Amwĩie  
nũkwĩw'a nesa. Ndakĩtalĩ nĩwamwovie Mũatha  
kyaa. Mbatha nĩweewie kyeva kwona Mũatha  
ovetwe kĩsaa kyake.







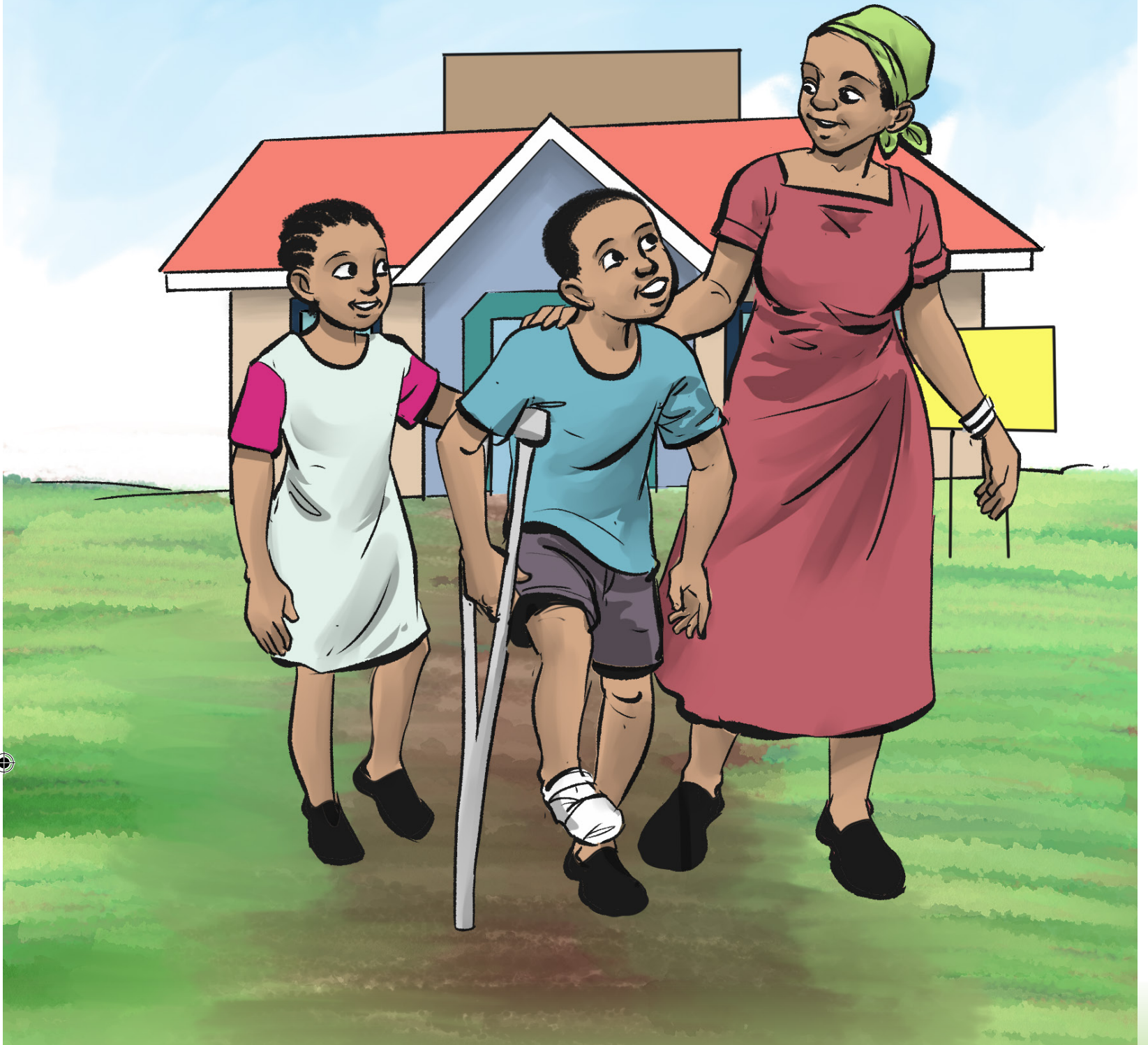
Ndakĩtalĩ nĩwaminie kũmwova Mũatha kyaa.

Ndakĩtalĩ: Nũũvoa na ndũkathaũke ãngĩ mbuanĩ.

Mũatha: Tũikathaũka ãngĩ mbuanĩ, nĩnatũnga mũvea.







Mwaitũ nĩwamũĩvie ndakĩtalĩ na menũka. Mũatha  
nĩwambĩie kwĩw'a nesa. Mwaitũ na Mbatha  
nĩmatanie. Mũatha onake nĩwatanie.

