



Mukite ali mugiredi ya khataru. Sikuli sia Mukite bali Namwacha.





Endalo ndala Mukite kenyokha asubui. Mala kanywa echai nende kamaindi.





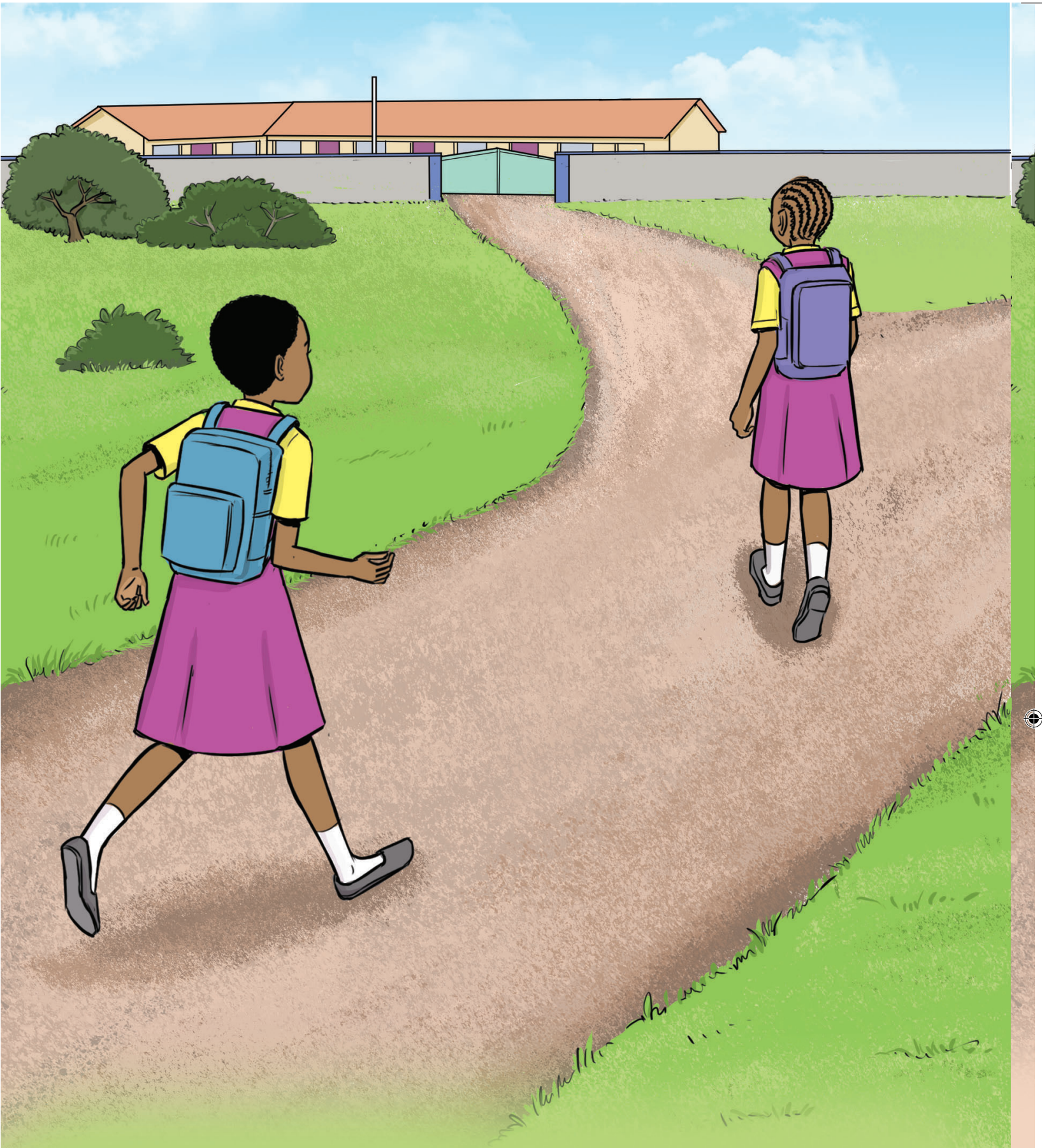


Mukite khumala khunywa echai, katima esikuli.

Mukite sekasima khuchelewa tawe.







Mukite nalikho natima, kabona omusale wewe ebweni.



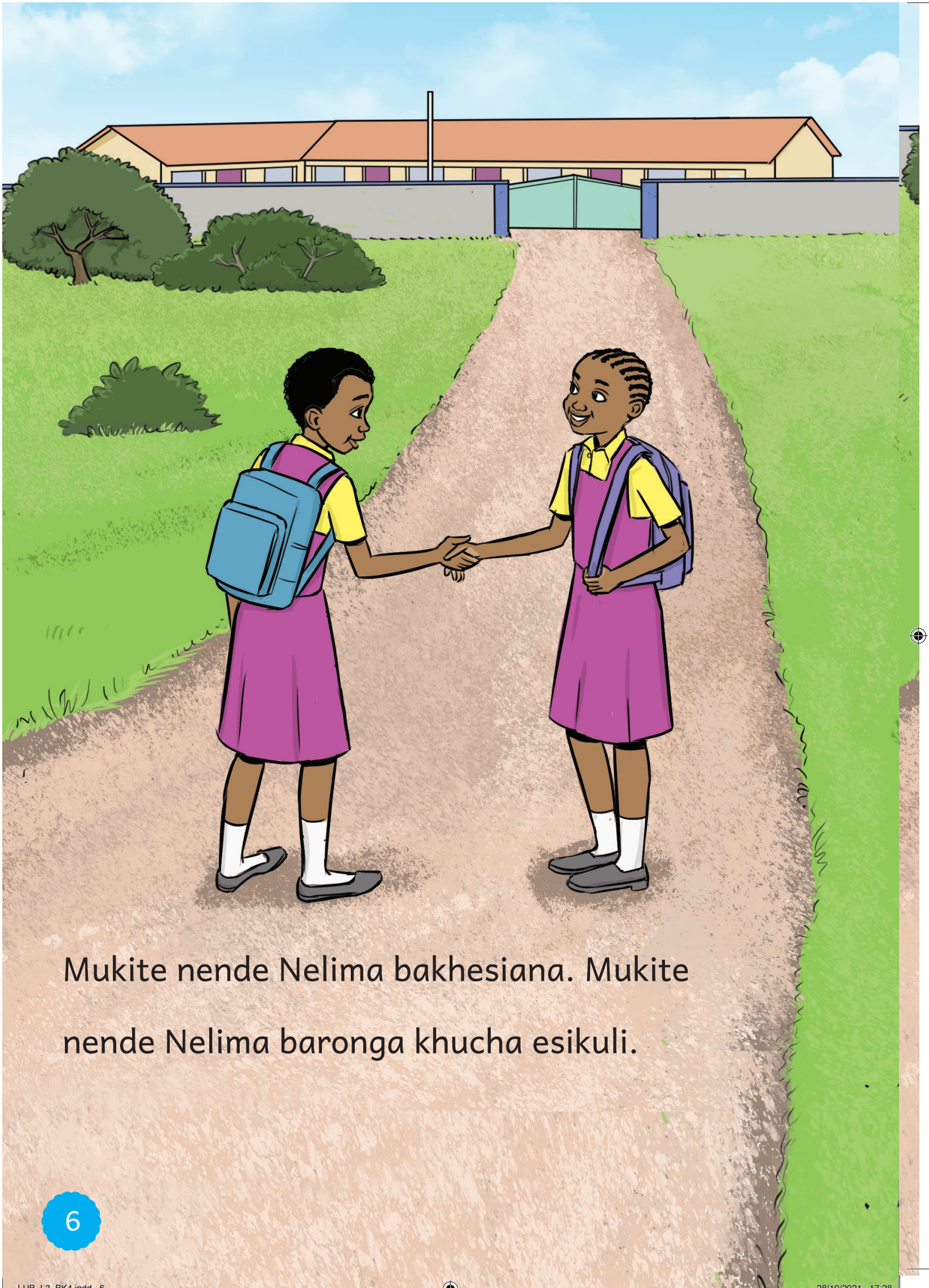




Omusale wa Mukite bali Nelima. Mukite katima  
mala kamwolakho Nelima.



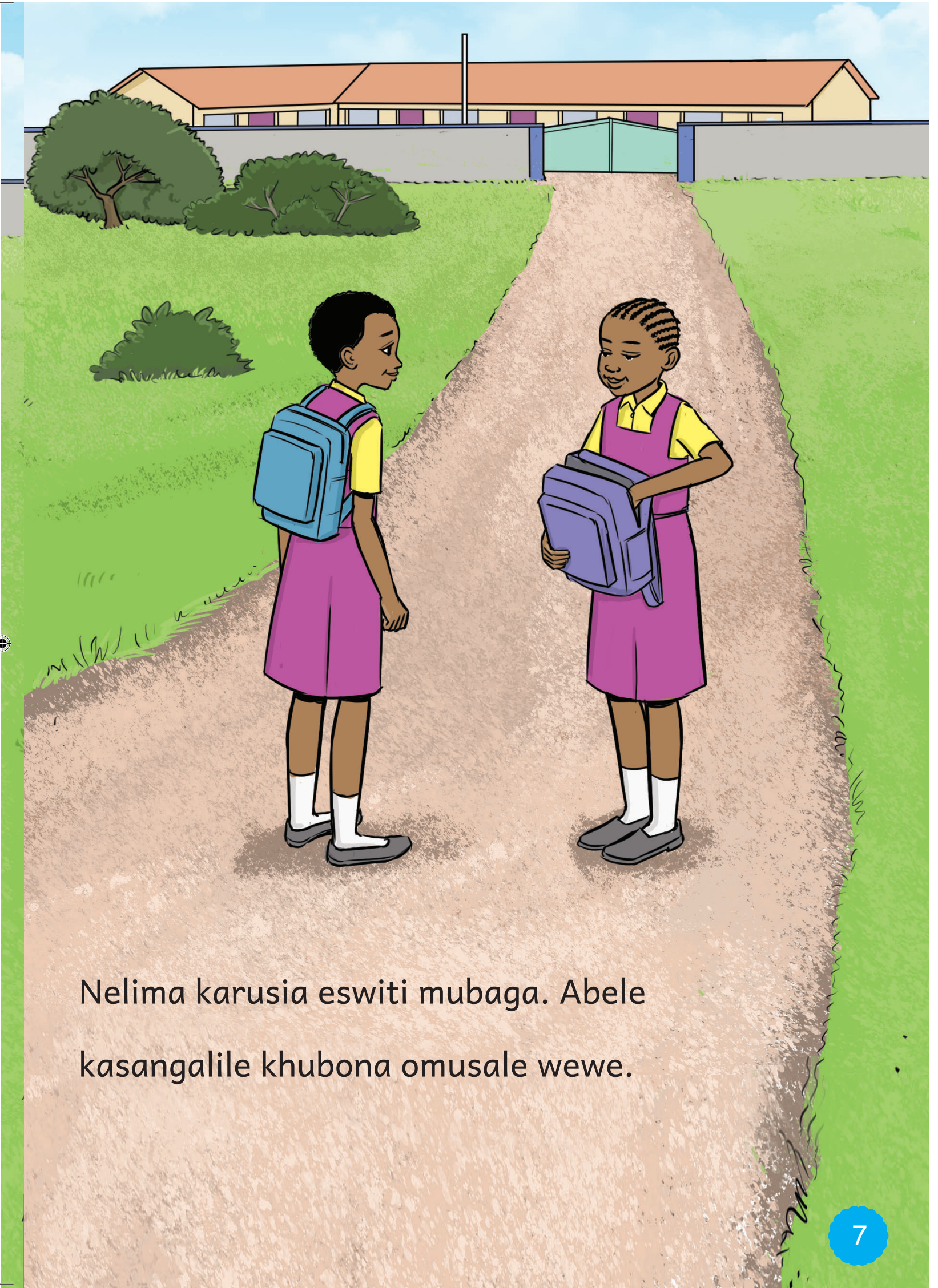




Mukite nende Nelima bakhesiana. Mukite  
nende Nelima baronga khucha esikuli.



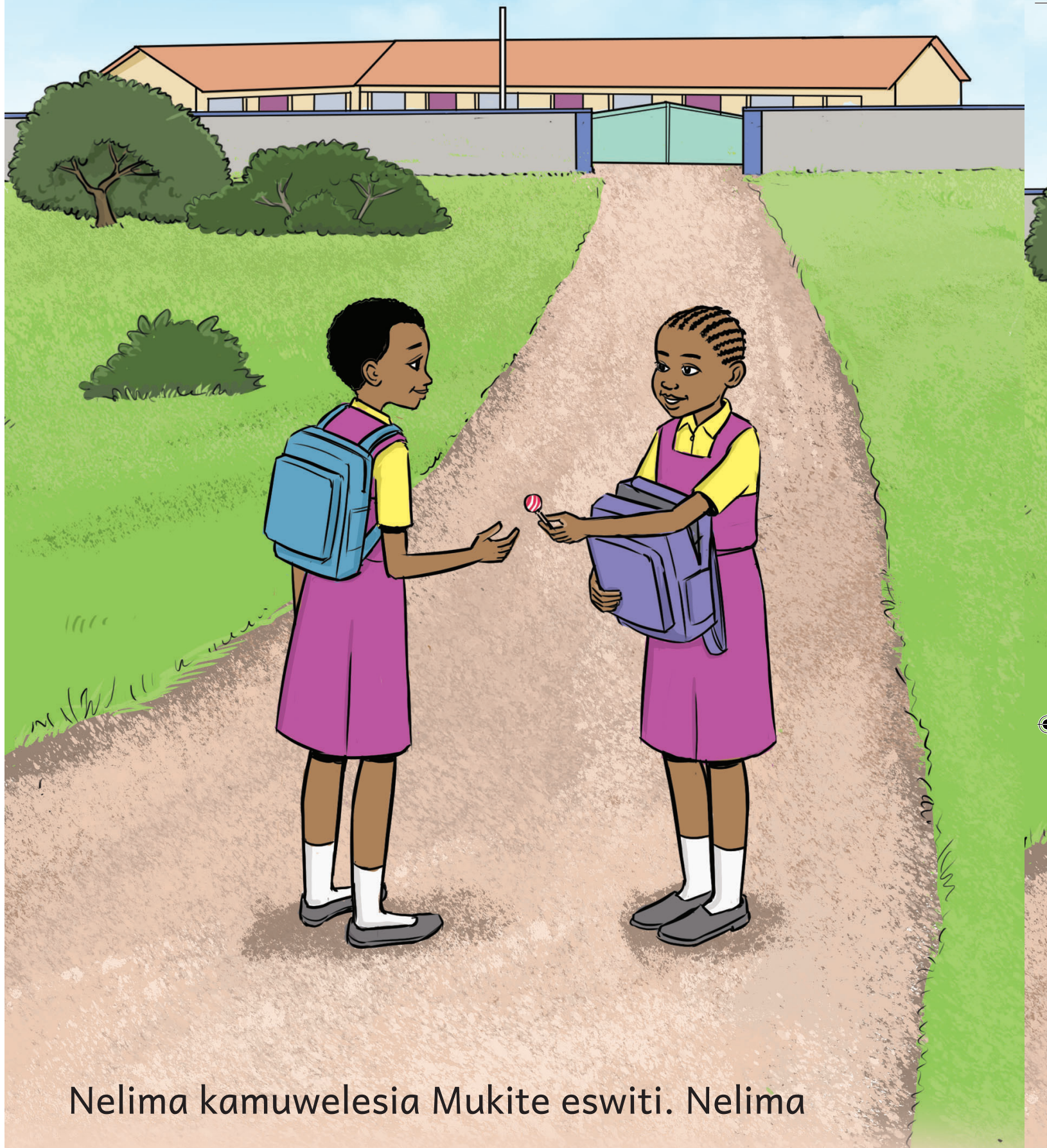




Nelima karusia eswiti mubaga. Abele kasangalile khubona omusale wewe.







Nelima kamuwelesia Mukite eswiti. Nelima kamubolela ali mayi wewe amubolelanga ali buli bulayi khukabana sisindu nende babasie.







Mukite kabukula eswiti mala kalia. Nelima yesi kalia switi yewe.





Nabakhamala khulia chiswiti, Mukite kaloma ali bakhebilila khusukua kameno nabalia chiswiti ta. Nelima yesi kaloma ali khusukua kameno khukhinga kameno khubola.



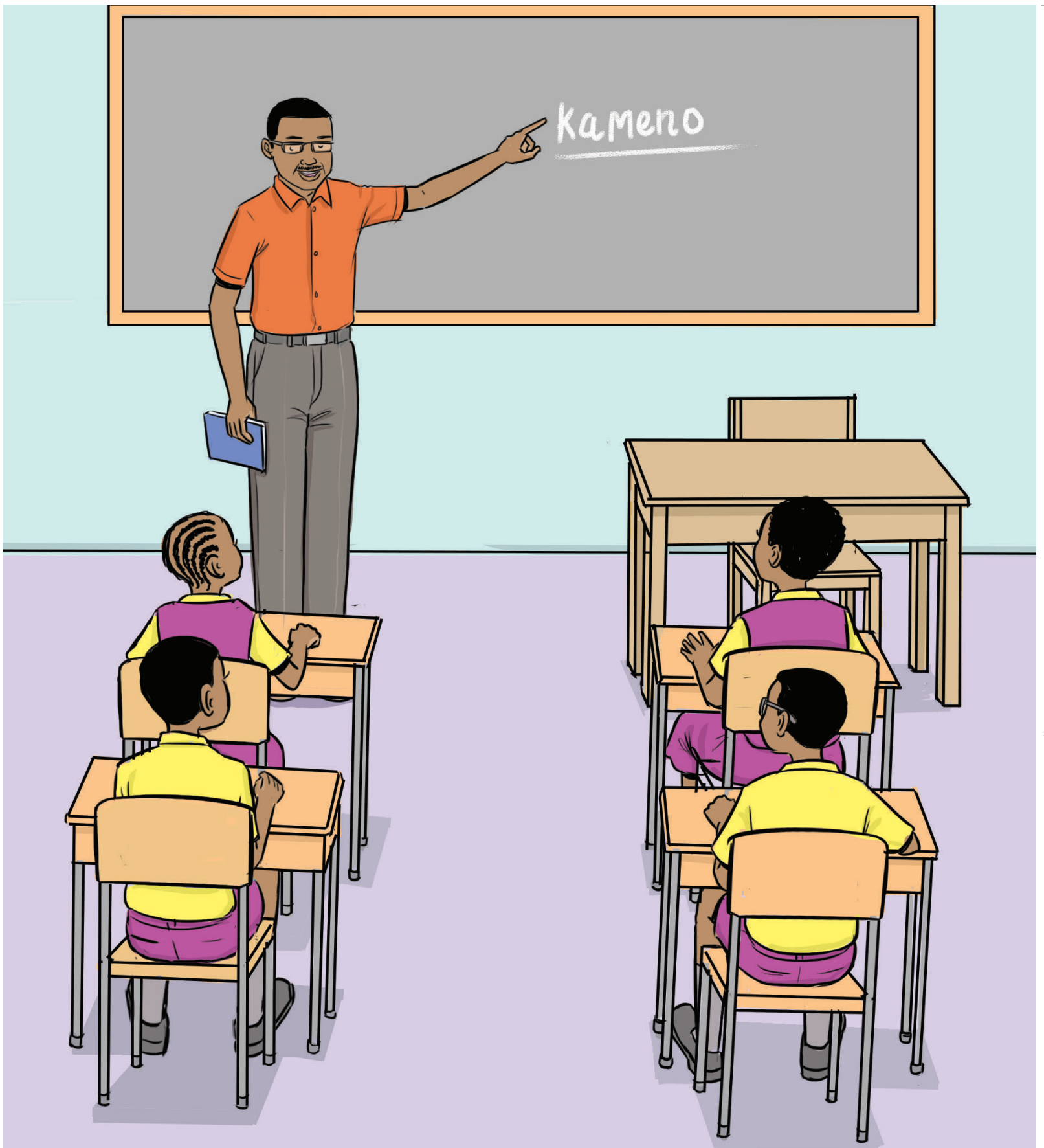




Mukite nende Nelima bola simbi nende silibwa sie sikuli. Bakhesia omusikari mala batima mukilasi.







Mukite nende Nelima khwola mukilasi banyola mwalimu mukilasi. Mukilasi basoma bulayi bwe khuba nende kamenno kamalayi.

