

INGwenya neFene bekubangani abakhulu.

INGwenya yabe ihlala emlanjeni.

IFene yabe ihlala emthini eduze komlambo.



INgwenya yabe idla iinhlambi ezibuya emlanjeni.

IFene yabe idla iinthelo ezibuya emthini.



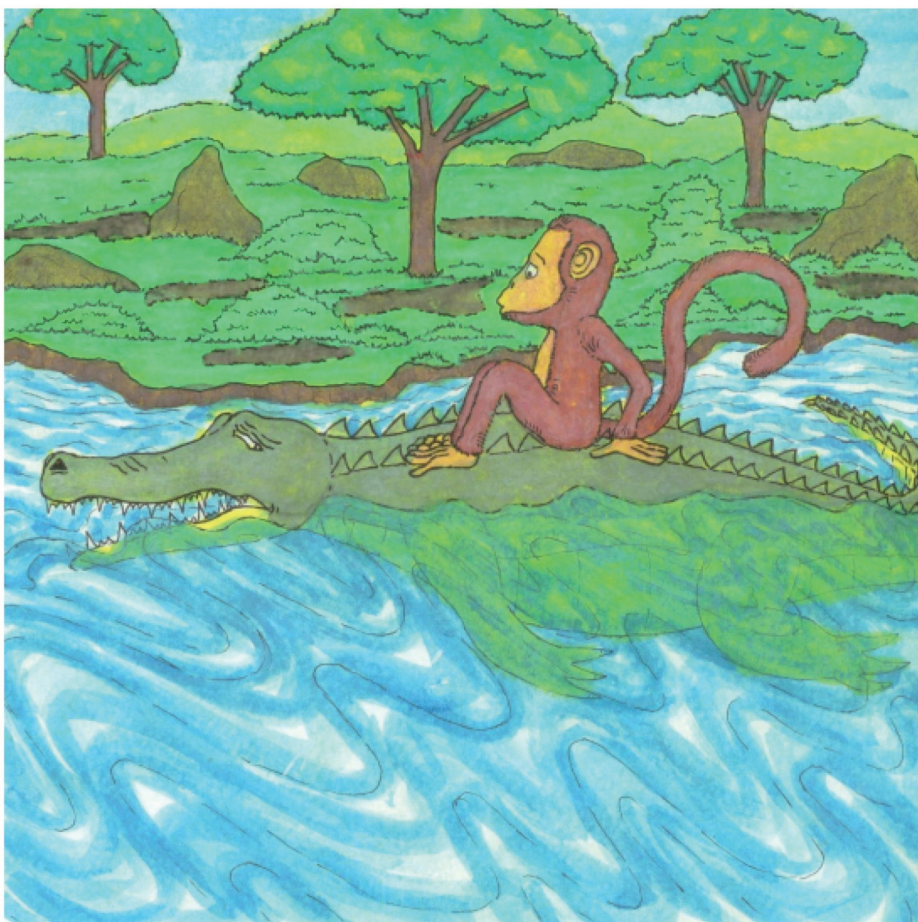
Umntwana weNgwenya wabe abangwa neenzibi.

Ugogo wakhe leNgwenya wamtjela bona, "Sibindi seFene kwaphela esingapholisa umntwana."



INgwenya yamema iFene ukobana ize endlinayo emlanjeni.

INgwenya yabawa ukubhebhula iFene.



Lokha iNgwenya nayidudako, yatjela iFene ngomntwana wayo ogulako.

“Sibindi seFene kwaphela esingamsindisa,” kutjho ingwenya itlhuwile.



“Ngabe ungitjelile ngaphambi kobana sikhambe!” kulila iFene.

“Ngibeka isibindi sami emthini, asikhambe siyosithatha,” kutjho iFene.



Kwamambala iNgwenya yaduda yabuyela emuva bajika.
IFene yeqela phasi yabaleka msinya yakhwelela emthini.
INgwenya yalinda.



INgwenya yalinda isikhathi eside, kodwana akhange isabuya iFene.