



Nala le Naka ba kwa kampeng ya sekolo.

Ba tlhoma ditente tsa bona mme ba bogela letsatsi le le tukang fa le dikela.

“Le lentle,” ga fegela Nala ka boitumelo.



Ba lebile letsatsi le kotlomela kwa tlase kwa bokgaleng ba bodikela.

“Ngwedi o feletse bosigong jo,” Naka a lemoga se fa ngwedi o rotoga kwa botlhaba.

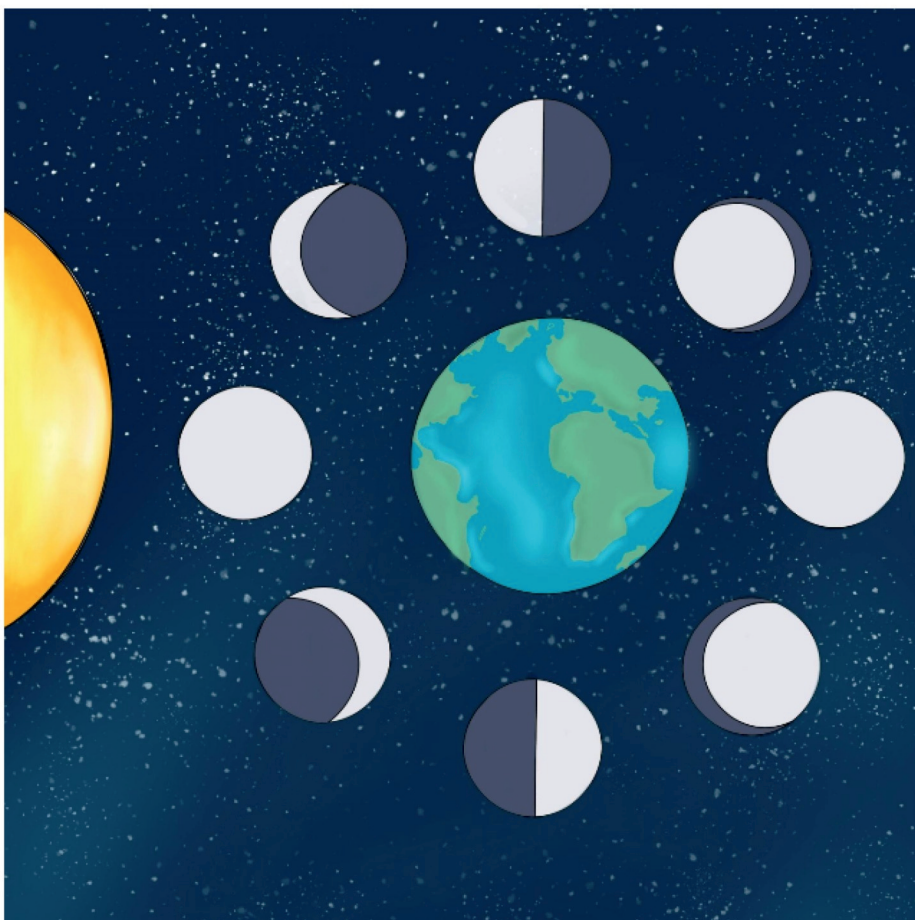


Bana ba kaname go ithuta legodimo bosigo.

"Ija, go na le dinaledi tse dintsi, mme di benya jaaka ditaemane!" ga tsibosa Naka.



A re, "Ngwedi o benya ka gonne o tsabakela ka lesedi la letsatsi. Fa ngwedi o feletse, go lebega ekele ngwedi otlhe o tshubile."



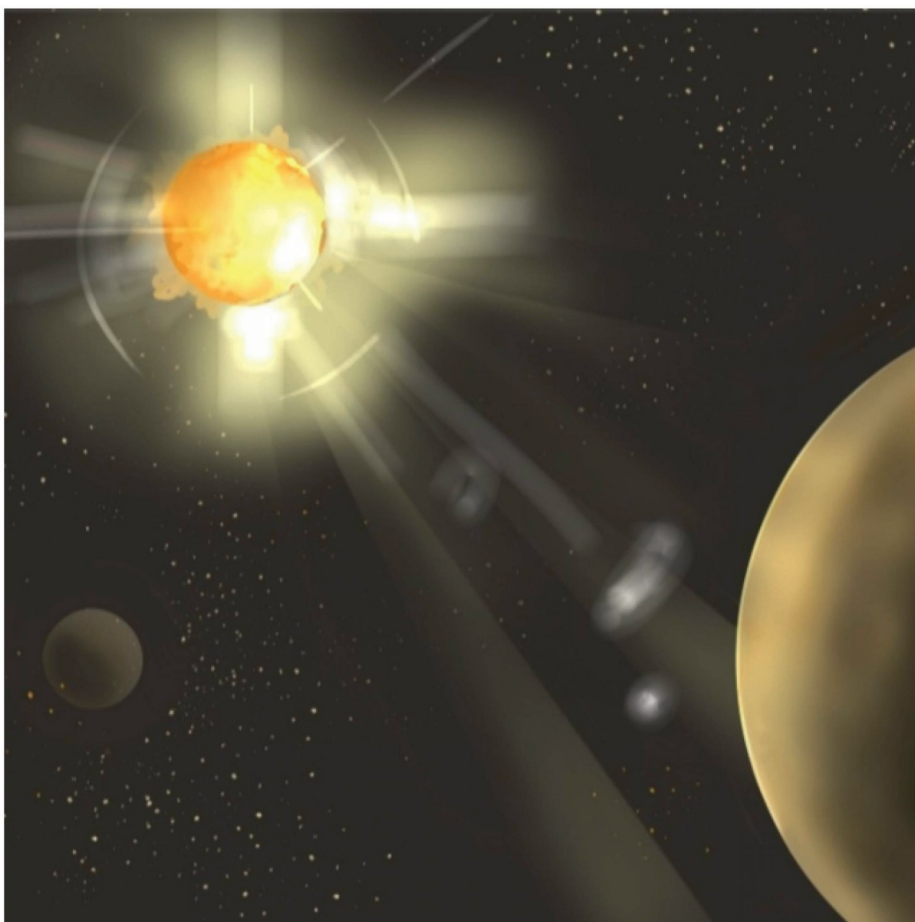
Nala o dumelana le ena, "Ngwedi o dikologa lefatshe. Ka dinako dingwe re kgona go bona fela karolo ya ngwedi e kganya, mme e lebege jaaka panana."



O a tswelala, “Ngwedi o lebeja jaaka kgwele ya dinao fa o feletse. Fa kgwedi e feta, re bona seripa sa ngwedi, le popego ya panana.”



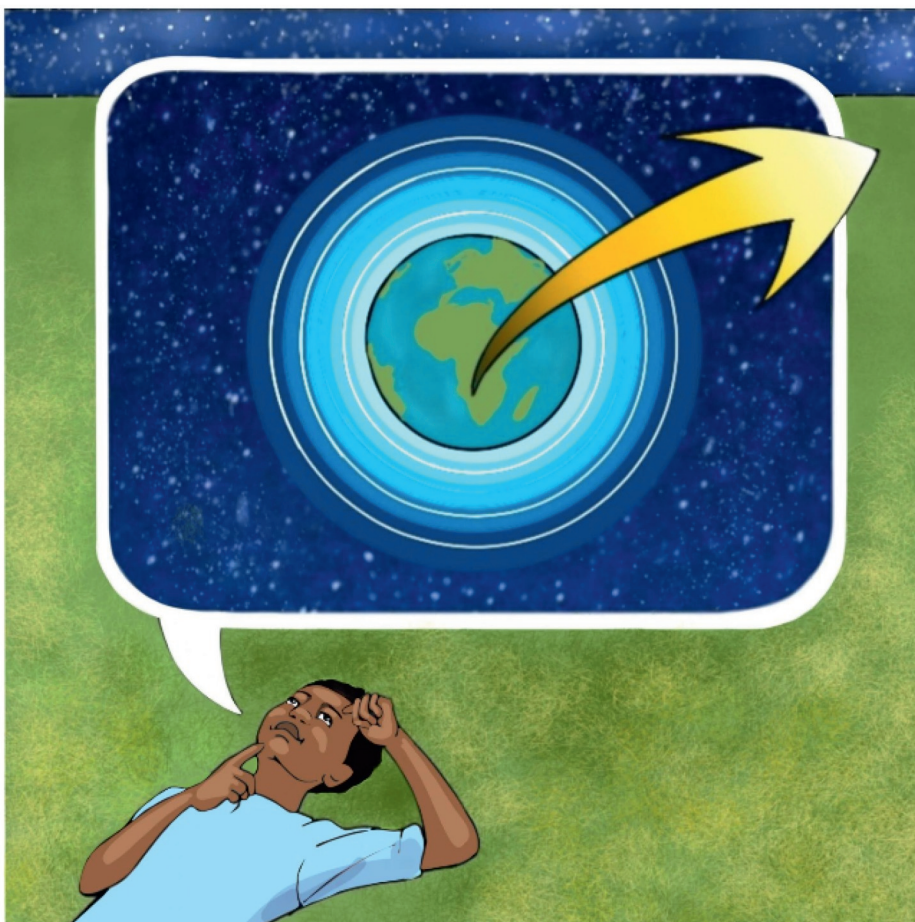
Naka a bua ka boipelo, "Ke itsitse jalo! Ke itse gape gore ngwedi o dikologa lefatshe, mme mmogo di dikologa letsatsi."



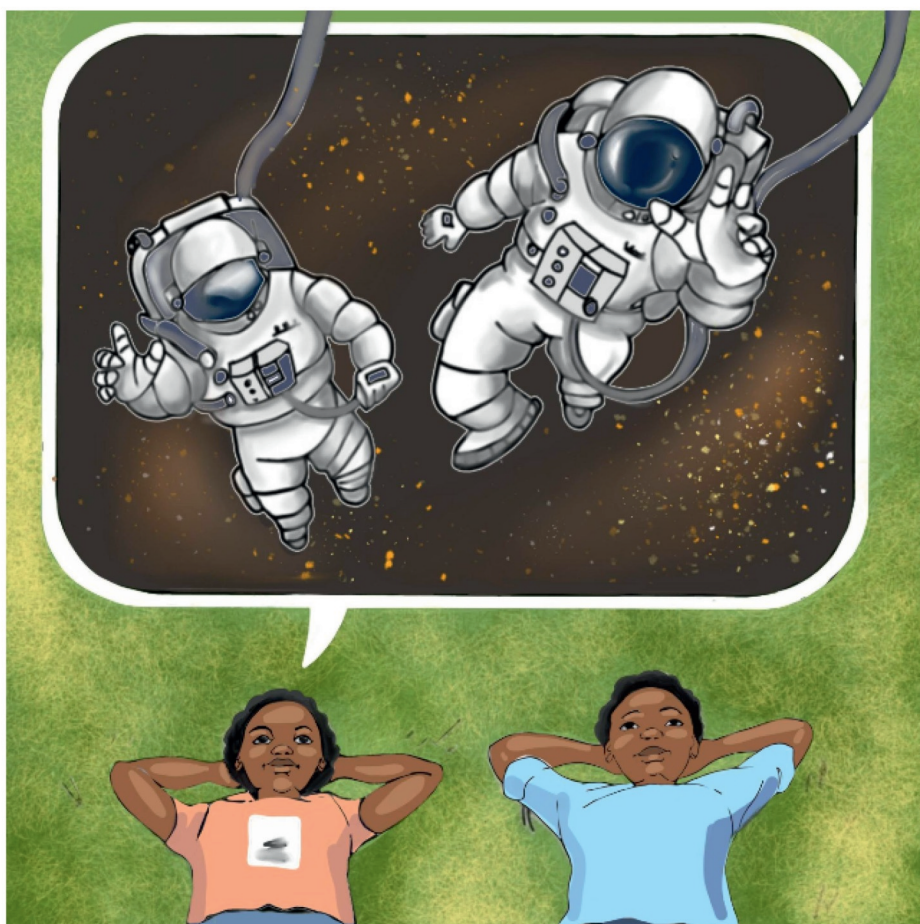
Nala a nyenya, "A o ne o itse gore letsatsi ke naledi?"

A tlaleletsa, "Letsatsi ke naledi e kgolokgolo ya digase tse di tukang, di dira lesedi le mogote."





Naka a lemoga, "Kwa ntle ga dipone tsa toropo, re bona legodimo sentle. Lefaufau le simologa kwa godimo ga thatlhagano ya mowa go dikologa lefatshe, fela lefaufau le felela kwa kae?"



Nala a nyenya, "Re tla nna borralefaufau mme ra tsamaya ka sesuthalefaufau se se lebelo. Re tla feta dipolanete le dinaledi tse di kgakalagkagala. Mme re tla itse kwa lefaufau le felelang."



## —Dipotso

1. Kgang e e ka ga bomang? Ba dira eng?
2. Ngwedi o o feletseng ke eng? O thale.
3. Ngwedi o rotoga kwa kae?
4. Ke naleli efe e e gaufi le lefatshe?
5. Go na le dipolanete tse 8. Batla maina a tsona.
6. Thala setshwantsho sa letsatsi le dipolanete.