



Nala na Naka vha khempeni ya tshikolo.

Vha atha madennde avho, vha sedza u kovhela ha dluvha
litswukutswuku.

Nala o takala, a ri, “lo nakesa.”



Vha sedza ɔuvha ʒi tshi suvhela vhukovhela.

Naka u ri, “Ŋwedzi wo ɔala ŋamusi,” u ralo o sedza ŋwedzi u tshi ɔavha vhubvaɔuvha.



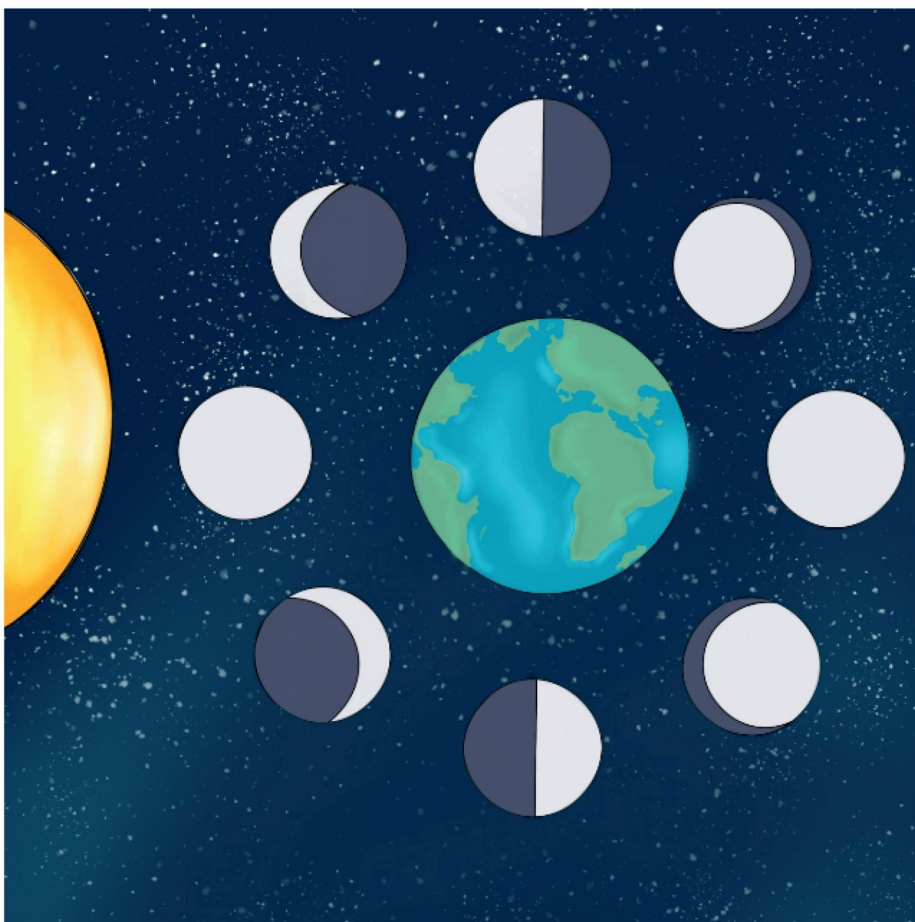
Vhana vha ganama u itela u guda nga ha

lutombo vhusiku.

Naka o akhamala, "Hu na naledzi nnzhinnzhi, nahone dzi
penya sa daimane!"



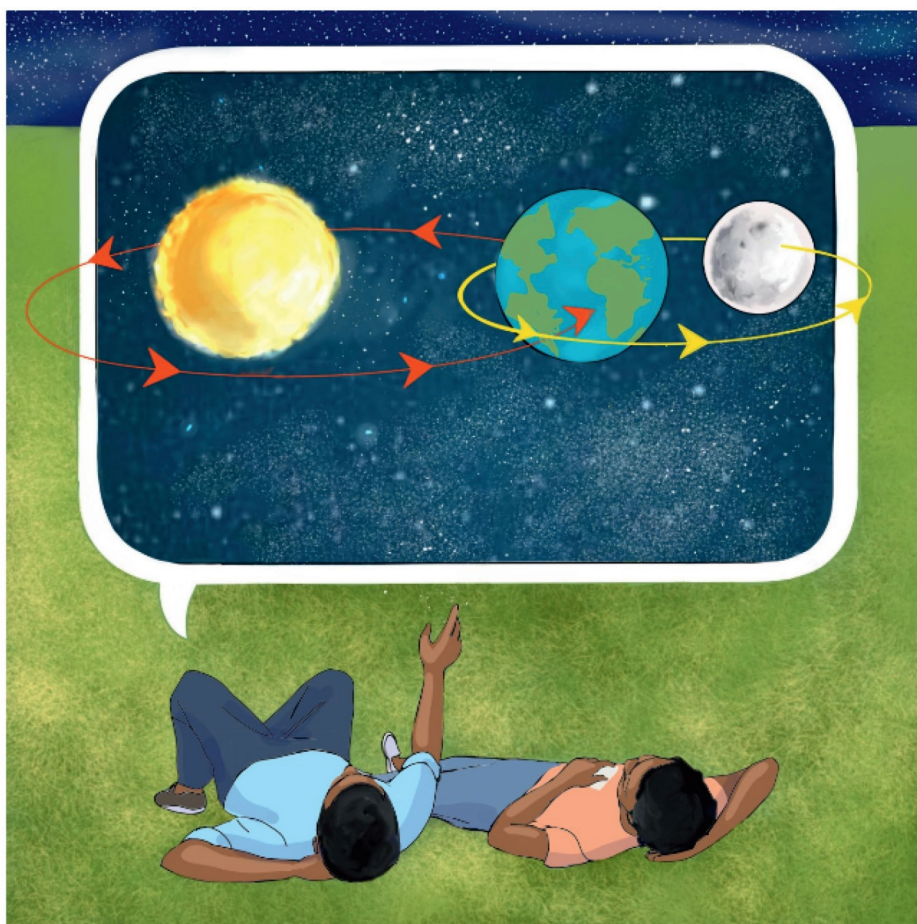
U ri, “Nwedzi u penya ngauri u khou vhone tshelwa nga dluvha. Musi nwedzi wo dala, zwi vhone ala u nga nwedzi wo fungwa wothe.”



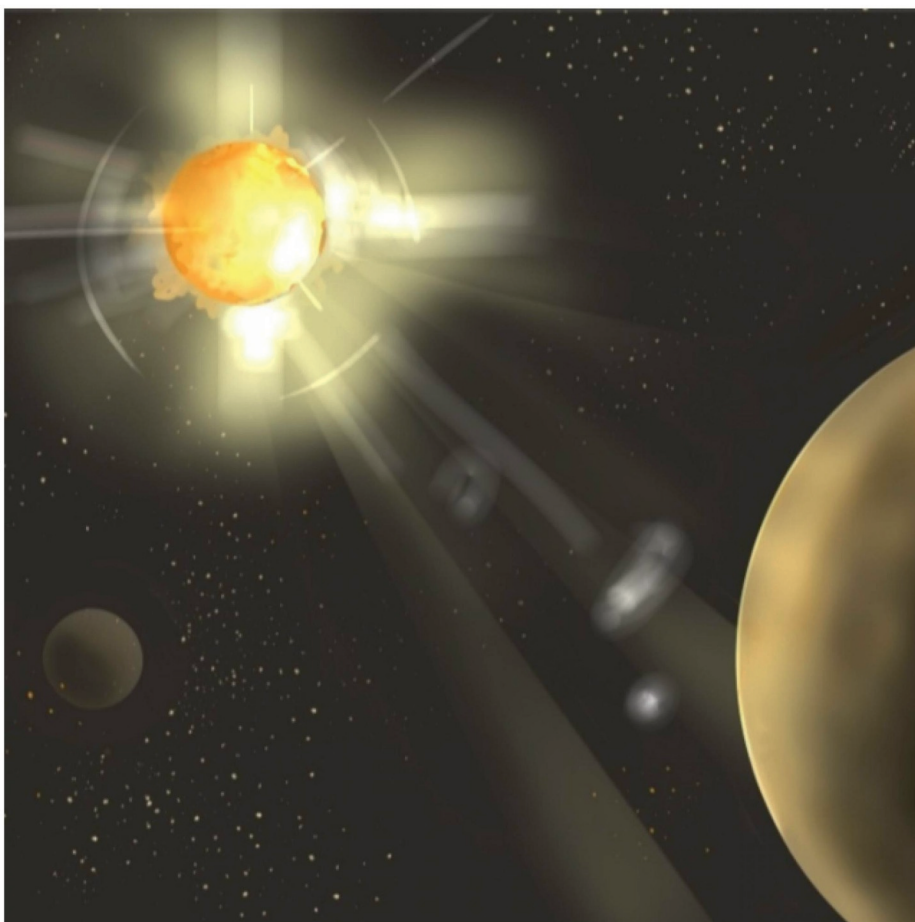
Nala a tenda, “Nwedzi u mona jifhasi. Nga zwiñwe zwifhinga ri vhona tshipiḽa fhedzi tsha ñwedzi, nahone tshi nga muomva.”



U bvela phanda, “Musi wo ɔala, n̄wedzi u fana na bola ya milenzhe. Musi n̄wedzi u tshi fhira, ri vhona tshipiḁa tsha n̄wedzi, u tshi nga muomva.”

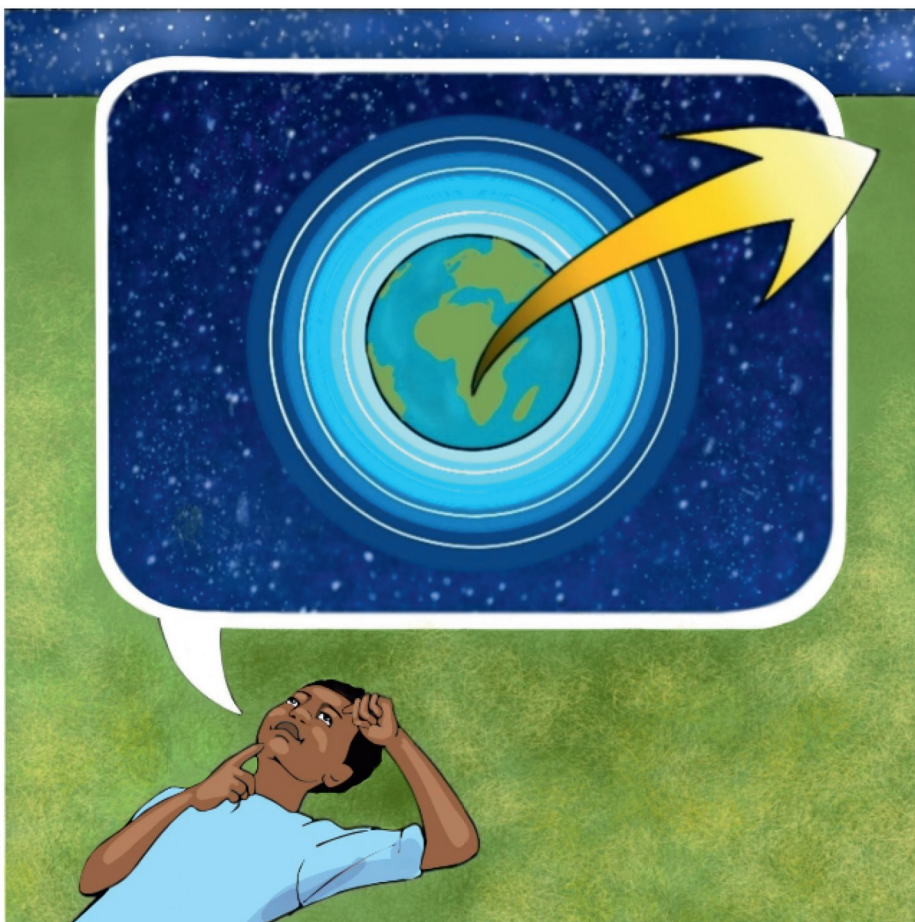


Naka a tshi ɔirwa khana, “Ndi a zwi ɔivha hezwo! Ndi ɔivha uri n̄wedzi u mona ɔifhasi, nahone n̄wedzi na ɔifhasi zwi mona ɔuvha.”

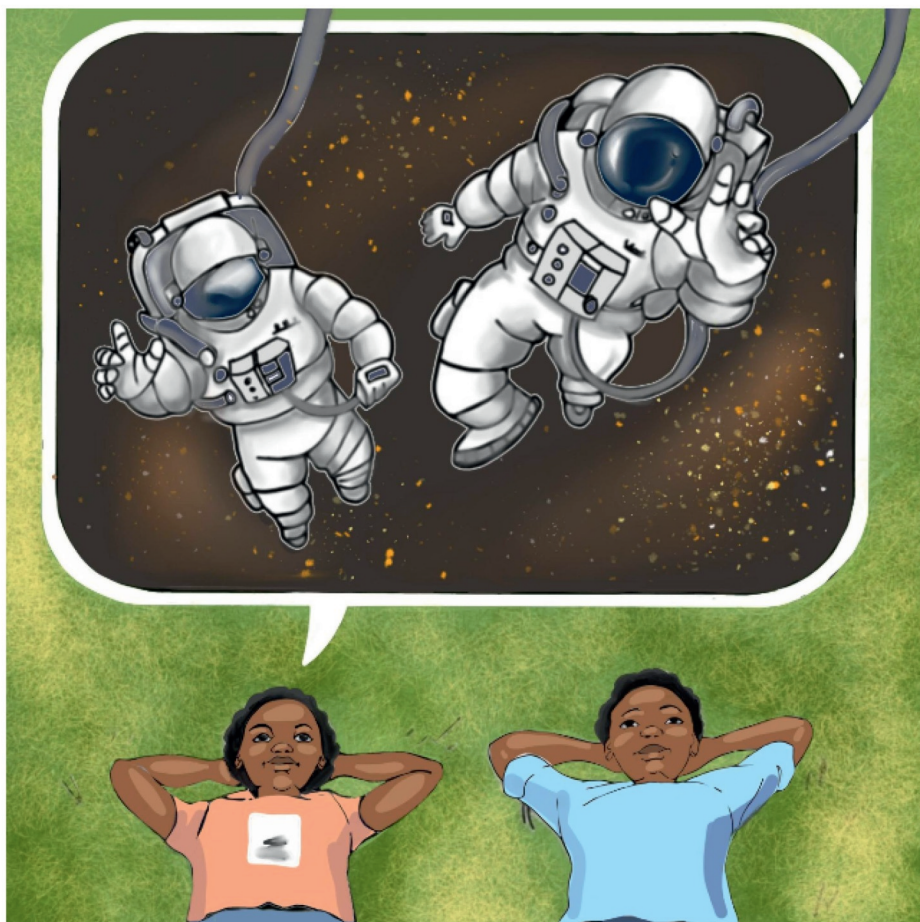


Nala a n̄wethuwa, “Ni a zwi ḡivha uri ḡuvha ndi ḡaledzi?”

A engedza, “ḡuvha ndi ḡaledzi khulwanesa yo vhumbwaho nga gese di fhisaho, dzine dza ita tshedza na mufhiso.”



Naka a ţhogomela, “Hu si na mavhone a dziḡoroboni, ri vhona lutombo zwavhuḡi vhusiku. Tshikhala tshi thoma nga ņḡha ha mufhe wo tangaho ḡifhasi, fhedzi tshikhala tshi fhelela ngafhi.”



Nala a mwemwela, "Ri ɔo vha "dzi 'astronaut,'" ra enda nga mutshini wa luvhilo wa tshikhalani. Ri ɔo fhira puḽanete na dziḽaledzi. Ngauralo ri ɔo ɔivha hune tshikhala tsha fhelela hone."



—Mbudziso

1. Tshenetshi tshiṭori tshi amba nga vho-nnyi?
Vha khou ita mini?
2. Nwedzi wo ḡalaho ndi mini? U oleni.
3. Nwedzi u ṭavha thungo ifhio?
4. Ndi ifhio ḡaledzi ire tsinitsini na ḡifhasi?
5. Hu na puḡanete dza malo. Wanani madzina adzo.
6. Olani ḡuvha na dzipuḡanete.