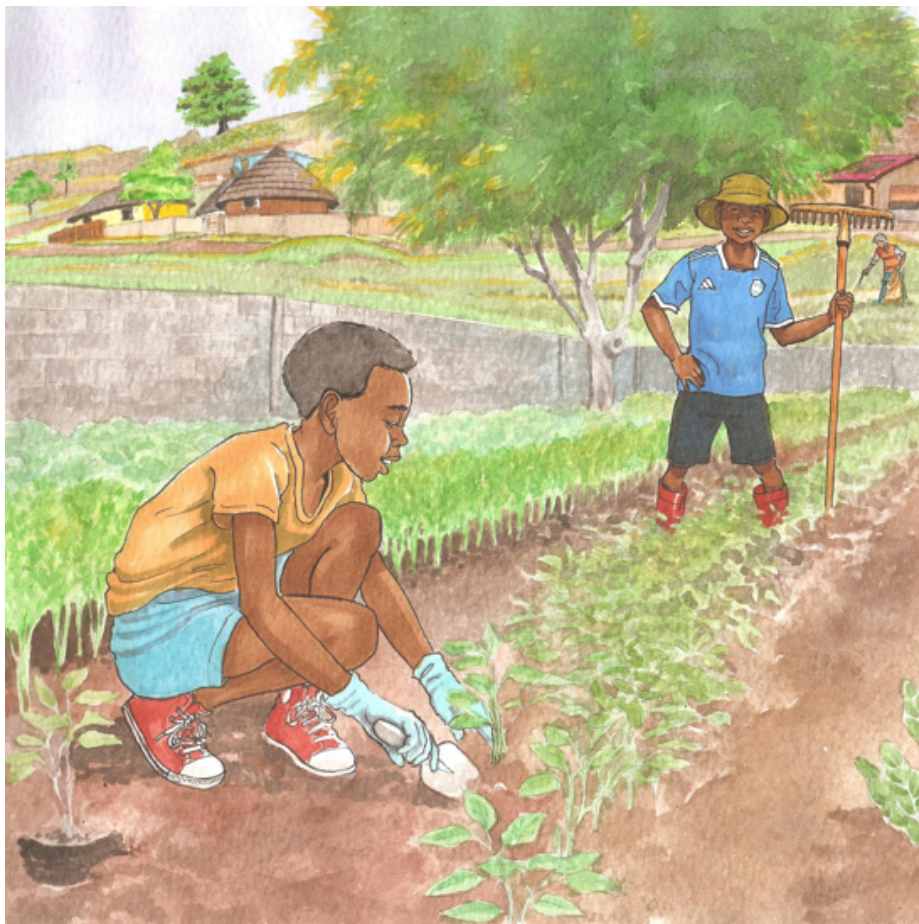




Naka naNala bakhuluma ngemhlaba

Connie Makgabo
Vusi Malindi





Naka naNala basengadzeni yabo. Bayalima, futsi batjala tibhidvo.

“Yini lesenta sisebente kangaka elangeni?” kubuta Nala.



“Sisebenta ngecutikhandla ngobe siyawutsandza umhlaba nendzawo lesihlala kuyo!” kusho Naka.

“Bantwana bakhula kahle endzaweni lehlantekile,” uyengeta.



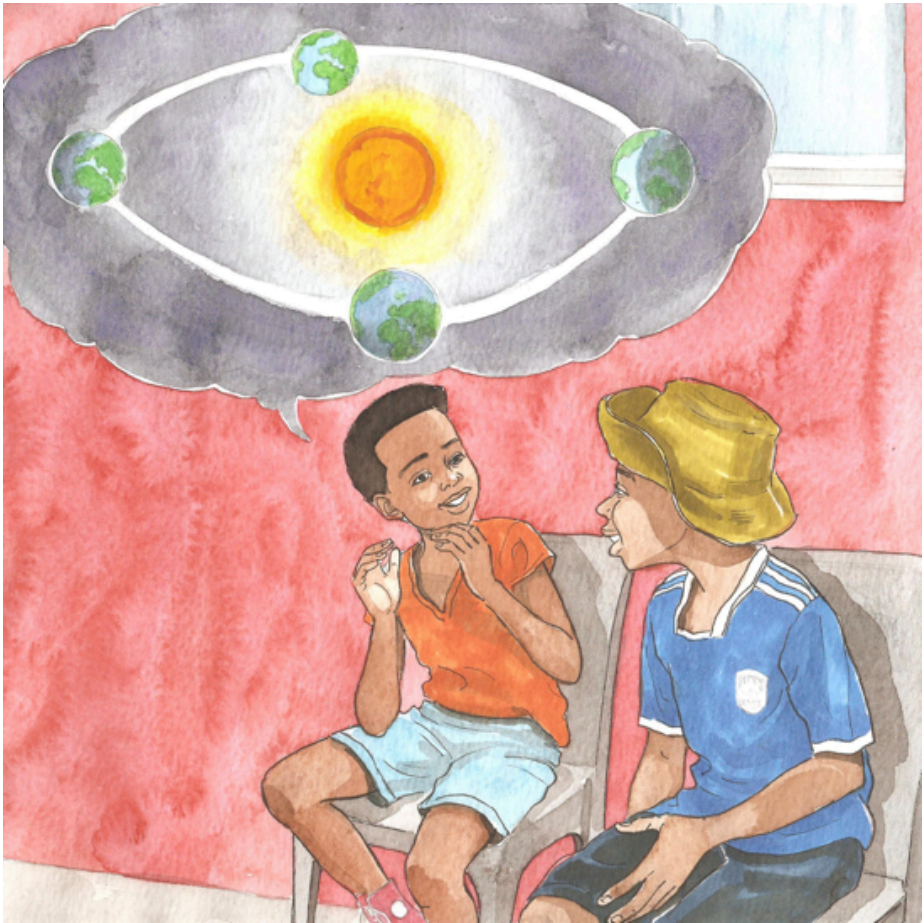
“Siphindze sitjale tibhidvo kute sidle kudla lokunemsoco,” kuchubeka Naka.

“Kantsi futsi kutjala tibhidvo tetfu kongga imali,” kusho Nala.



“Konje bewutsini ngemhlaba? Ngicela ungitjele lokwengetiwe?” kuncenga Nala.

Naka utsi, “Asihlale phasi, ngitakutjela lokutsite ngemhlaba wetfu.”



Naka uyacala, “Umhlaba uyiplanethi leyindingilizi lesihlala kuyo. Emhlabeni kunebantfu labacishe babe tigidzigidzi letisiphohlongo! Umhlaba uhamba ujikelete lilanga.”



“Umhlaba wakhiwa ngumhlabatsi, umoya, kanye nemanti. Tintfo letiphilako tiphila ngetulu kwaleplanethi ngobe ngekhatshi kuyo kushisa kakhulu,” kuchaza Naka.



Nala umngena emlonyeni, “Yini leyenta kutsi singawi phasi emhlabeni?”

“Sibanjwa ngemandla atibutse. Lamandla asenta sinamatsele kuleplanethi,” kuphendvula Naka.



“Singawunakekela njani umhlaba?” kubuta Nala.

Naka uyaphendvula, “Kufanele singawungcolisi umhlaba. Kufanele sigucule tintfo lesetisebentile futsi sinciphise inkhukhuma yetfu.”



Naka uyachubeka, “Kufanele sigucule bese sisebentisa kabusha emapulasitiki, emaphepha, tingilazi, kanye netiketela. Singakhona kwakha letinye tintfo letinsha sisebentisa tintfo lesitiguculile. Tinyenti kakhulu tintfo lesitilahlako.”



Naka uyaphetsa, “Kufanele siwunakekele umhlaba ngobe bantfu kudzingeka bahlale kuwo.”

Nala uyamangala, “Asibuyele emsebentini!”

—Imibuto

1. BoNala naNaka bentani? Kungani?
2. Bhala tintfo leti-4 letimayelana neplanethi yetfu.
3. Kungani kufanele siwunakekele umhlaba?
4. Kusho kutsini 'kugucula' tintfo?
5. Ngutiphi tintfo lesingatigucula? Bhala phasi tibonelo.
6. Yini lenye lesingayenta kute sivikele umhlaba?



Ulwazi Lwethu is a Zenex Foundation funded and initiated project to develop a series of graded and leisure African language readers and teacher support materials. This project is targeted at teaching and supporting learners in the Foundation Phase to improve their home language reading and understanding. The readers have been originated in nine African languages in collaboration with Molteno Institute for Language and Literacies, Nelson Mandela Institute for Education and Rural Development, Room to Read South Africa, and Saide. All resources are developed as Open Education Resources (OER).



NELSON MANDELA
INSTITUTE FOR
EDUCATION AND
RURAL DEVELOPMENT



Room to Read®
World Change Starts with Educated Children®

Your attribution should include the following:

Title: Naka naNala bakhuluma ngemhlaba

Author/s: Connie Makgabo

Translator/s: Simangele Khoza

Illustrator/s: Vusi Malindi


Assurer/s: Mduduzi Benjie Shongwe

Language: Siswati



© Zenex Foundation - Saide 2023

CC BY includes the following elements:

BY  - Credit must be given to the creator

