



Andile Mji nebunandzi betibalo

Glanice Masilo

Kamogelo Matlawe



Andile Mji unguchwepheshe wesifundvo setibalo.

Lenzaba imayelana nesikhatsi Andile asengumfana, nekutsi wakufundza njani kutsandza tinombolo.



Andile watalelwa eGqeberha, eMpumalanga Kapa.

Bekahlala namake wakhe nababe wakhe. Bebahlala eNew Brighton.

Dvutane nalapho, bekunenzawo lebitwa ngekutsi kuseTyeni. Mkhulu wakhe abehlala khona.



Andile bekatsandza kuvakashela mkhulu wakhe, lobenesibaya setinkhomo.

Mkhulu wakhe bekambuta atsi, “Tingaki tinkhomo letindvuna, futsi tingaki letinsikati? Tingaki tinkhomo letisesibayeni?”

Andile wacale wafundza kubala afike ku-10 ngeminwe yakhe. Wase ufundza kubala afike ku-20, ngetintwane takhe! Ngemuva kwaloko wafundza kubala ngakuhlanu.



Entsatsakusa, kwakhala lichudze. Bekuyinsimbi yesihlanu ngesikhatsi bavuka. Balungela kuyosenga tinkhomo.

Ngemuva kwaloko, baya edlelweni letinkhommo lelisentsabeni lesedvutane.

Bebavame kubuka lilanga kute bati kutsi sengubani sikhatsi.



Emini, mkhulu wakhe bekambita kutsi ete atokudla.
Sikhatsi bekusuke kuyinsimbi yelishumi nakubili.

Bekasati sikhatsi sekuya ekhaya. Bekungesikhatsi
sekushona kwelilanga.

Bekabala tinkhomo kute abone kutsi tonkhe tibuyile.



Ngesikhatsi Andile sekacale esikolweni, babe wakhe wamtsengela liwashi.

Bekasebentisa liwashi lakhe kute abale ngakubili, ngakutsatfu nangakune.

Liwashi lakhe belinetinombolo leticala kukunye lite liyofika kulishumi nakubili.

Andile bekakwati kubala tintsi letisho li-awa, ihhafu yeli-awa, kanye nemaminithi lasemkhatsini.



Andile bekakwati kuhlunganisa tinombolo ngenhloko.

Bekakwati kubala aye embili nobe aye emuva ngenhloko.

Ngasikhatsi tinkhomo titala. Andile bekabala ematfole.

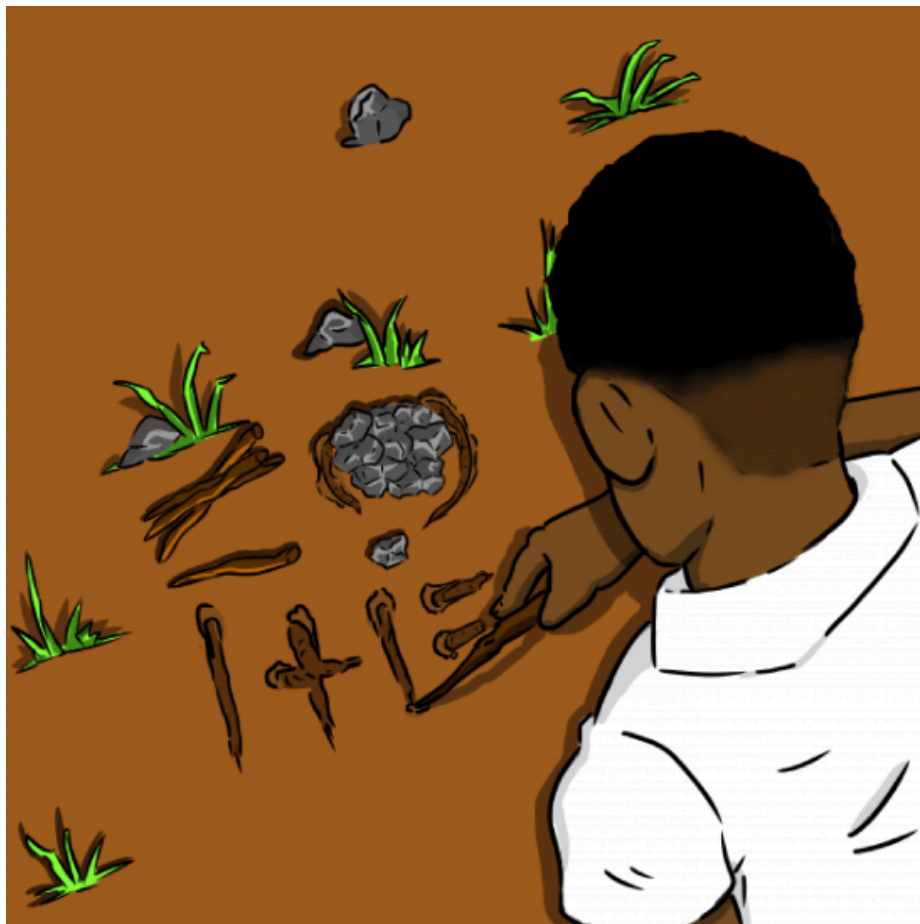
Bekakwati kubala aphindze asho emalanga eliviki netinyanga temnyaka, ngekulandzelana.



NgaboLesihlanu, bekapakisha sikhwama sakhe kute ayovakashela mkhulu futsi bekhala lapho ngeMgcibelo nangeLisontfo.

NgeMsombuluko, bekabuyela ekhaya kute aye esikolweni.

Nakuvalwa ticolwa, bekahamba ayovakashela mkhulu.



Ngesikhatsi Andile acala esikolweni, bebasebentisa ematje netintsi nababala.

Bekasebentisa iminwe yakhe kute abhale emhlabatsini. Bekahlanganisa tinombolo emhlabatsini.

Likilasi labo belingephansi kwesihlahla. Nalina, bebangkwati kuya esikolweni.



Nasakhulile lomfana waseBrighton, waya kuyofundzela tibalo enyuvesi. Wafundza iminyaka leminyenti.

Phrofesa Mji usebenta emkhakheni wetibalo lobitwa ngekutsi yi-statistics.

Usakwati kusho sikhatsi njengakadzeni, ngekutsi abuke lilanga.



Lamuhla, Andile Mji unguPhrofesa. Usebentisa iminwe yakhe kungcondvomshini.

Usebentisa tinombolo nemagrafu kute acoce tindzaba. Usebentisa tibalo kute acatulule tinkinga.

Usebentisa i-statistics kute aphenzvule imibuto lenjengekutsi, 'Ngusiphi sibalokhatsi seminyaka yebantfwana labakulesikolwa?'



Phrofesa Mji usebenta ngabongcondvomshini nangetinombolo.

Utsi, “Bongcondvomshini balusito lolukhulu, kepha ngaletinye tikhatsi bayalimala! Lwati lwami luhlala lusengcondwweni yami kute kube sekugcineni.

Etibalweni, kute lokushintjako. Tibalo tihlale titibalo.”



Nangu umlayeto waPhrofesa Mji lota kuwe:

“Kute utati tibalo, kufanele utetayete kusebenta ngetinombolo.

Sifundvo setibalo sisho kwati ‘kwenta’. Tibalo yindlela yekwenta. Kufanele ufundze kucabanga ngetibalo.

Nawenta njalo utawuphumelela!”

—Imibuto

1. Andile wacala njani kufundza ngetinombolo nekubala?
2. Ingabe kubalulekile yini kufundza kubala ungasebentisi ngcondvomshini nobe sibali? Chaza imphendvulo yakho.
3. Bala ufike eshumini nakubili usebentisa kuphindza ngakubili, ngakutsatfu kanye nakune. Bese ubala uya emuva!

—Tincwadzi letikuloluchungechunge

- Andile Mji
- Asnath Mahapa
- Bongani Mayosi
- Charlotte Maxeke
- Mmantsane Moche Diale
- Mulalo Doyoyo
- Tebello Nyokong
- Tshilidzi Marwala

Lenzaba icanjwe yaphindze yabhalwa ngeSetswana, njengencenye yephrojekthi yetintfo tekufundza te-Zenex Ulwazi Lwethu ya-2020.



Ulwazi Lwethu is a Zenex Foundation funded and initiated project to develop a series of graded and leisure African language readers and teacher support materials. This project is targeted at teaching and supporting learners in the Foundation Phase to improve their home language reading and understanding. The readers have been originated in nine African languages in collaboration with Molteno Institute for Language and Literacies, Nelson Mandela Institute for Education and Rural Development, Room to Read South Africa, and Saide. All resources are developed as Open Education Resources (OER).



NELSON MANDELA
INSTITUTE FOR
EDUCATION AND
RURAL DEVELOPMENT



Room to Read®
World Change Starts with Educated Children®

Your attribution should include the following:

Title: Andile Mji nebunandzi betibalo

Author/s: Glanice Masilo

Translator/s: Simangele Khoza

Illustrator/s: Kamogelo Matlawe


Assurer/s: Mduduzi Benjie Shongwe

Language: Siswati



© Zenex Foundation - Saide 2023

CC BY includes the following elements:

BY  - Credit must be given to the creator

