

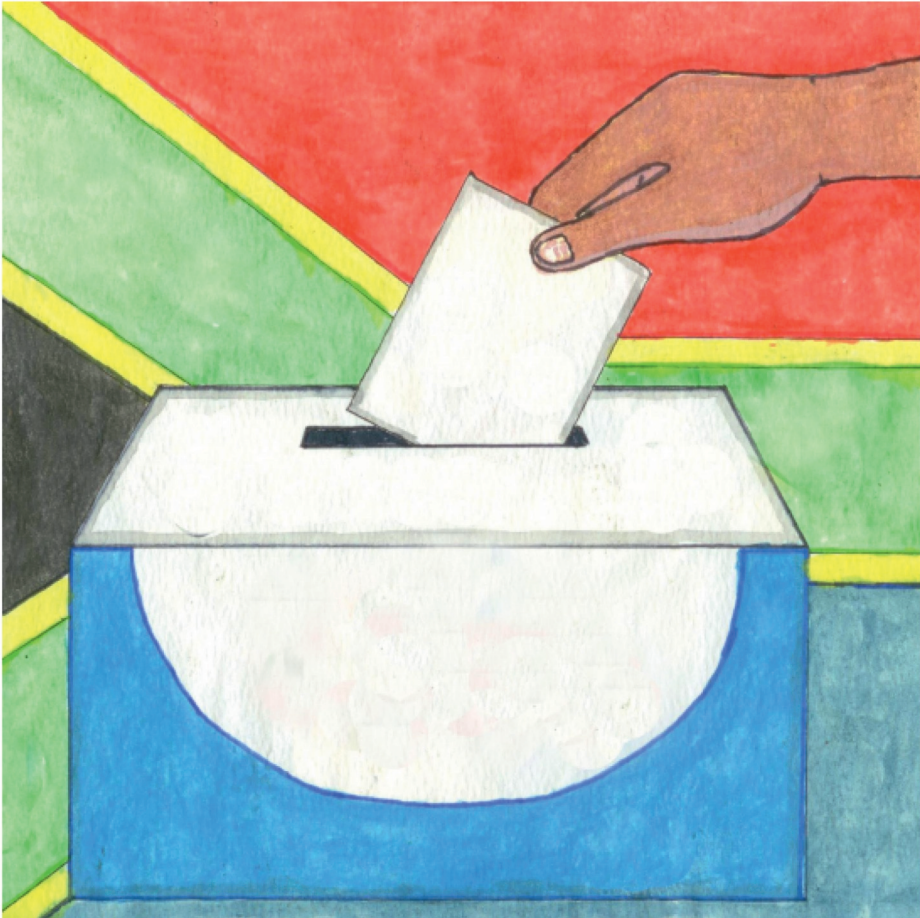


---

ENingizimu Afrika, Lilanga Lenkhululeko liholide  
lesive leliba ngemhlaka 27 ngaMabasa.

Lena yindzaba yeLilanga Lenkhululeko.

Utawufundza ngemlandvo walo, nekutsi yini lelenta  
libe lilanga lelimcoka.



Nga-1994, ngemhlaka 27 kuMabasa iNingizimu Afrika yatfola inkhululeko.

Bekukwekucala kutsi bantfu labamnyama baseNingizimu Afrika bavote elukhetfweni.

Sagubha kuphela kwelubandlululo, nekucala kwentsandvo yelinyenti.



Intsandvo yelinyenti luhlelo loluvumela kutsi bonkhe bantfu bakwati kuvota nangabe sebakhule ngalokwenele.

Bantfu bayavota elukhetfweni kute bakhetsa baholi babo nembuso labawufunako.

Ngesikhatsi selubandlululo, hulumende waseNingizimu Afrika bewungabavumeli bantfu labamnyama kutsi bavote.



Bantfu labanyenti lebebalwela inkhululeko bebalwisana nahulumende welubandlululo.

Nelson Mandela ngumuntfu lowalwela inkhululeko lowatiwa kakhulu. Walwela kulingana kwemalungelo abo bonkhe bantfu baseNingizimu Afrika.

Hulumende welubandlululo wamvalela ejele iminyaka le-27 ngenca yekutsi bekalwela inkhululeko.



Ngemhlaka 27 kuMabasa nga-1994, bantfu baseNingizimu Afrika eveni lonkhe, baya etiteshini tekuvota ekuseni ngeluvivi bacala kubamba emalayini.

Siteshi sekuvota yindzawo lapho kuvotwa khona.

Nasivota, sisuke sikhetsa umuntfu lesifuna aphantse hulumende wetfu.

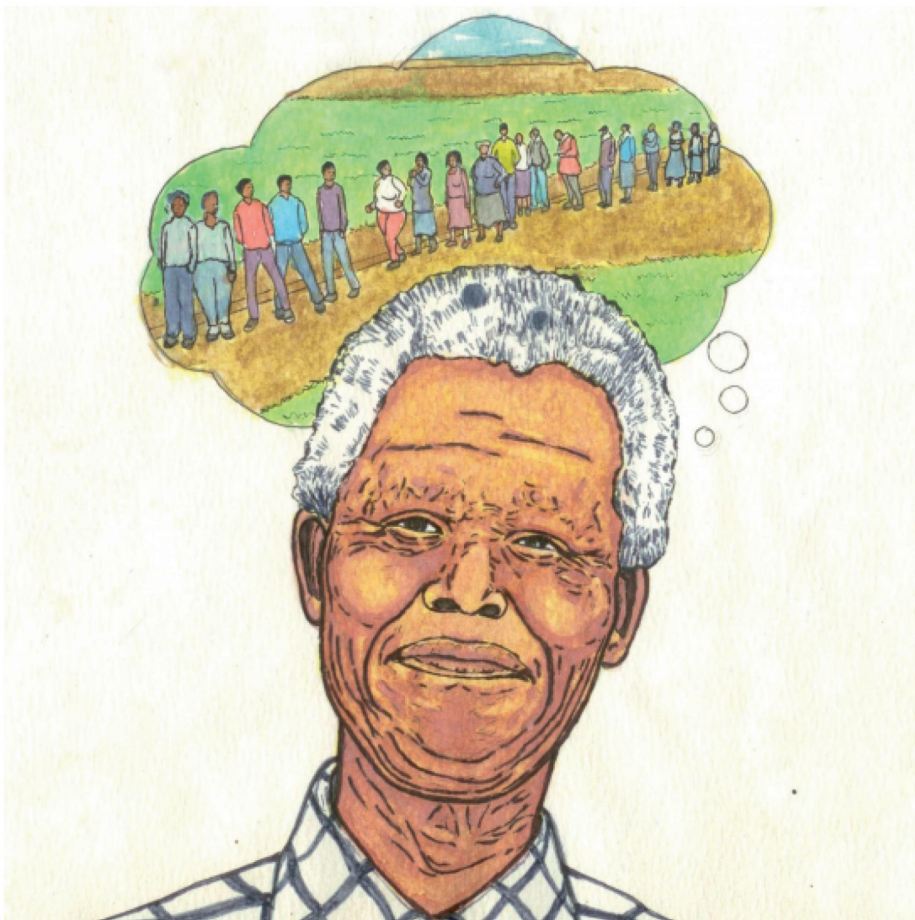


Bonkhe bantfu bebakulangatelela kuvota elukhetfweni lwekucala lwaseNingizimu Afrika lolukhululekile.

Emadelezi acala kuba madze kakhulu.

Lilanga belishisa likhipha umkhovu etjeni.

Nanobe kunjalo, bonkhe bantfu bebajabulile ngobe bebativa bakhululekile.



Nelson Mandela bekasolo alikhumbula kahle lelilanga.

Akazange awakhohlwe emadelezi labebanjwe bantfu emigwacweni.

Bekasabakhumbula bantfu labanyenti labebalindze kuvota elukhetfweni lwekucala lolukhululekile.

Letinkhumbulo tahlala njalo tisengcodweni yakhe.



Leli kwaba lilanga lapho bonkhe bantfu baseNingizimu Afrika labaneminyaka lengetulu kwe-18 labakwati kuvota ngalo.

Eveni lonkhe, bantfu bebalindzele ngesineke kungena etiteshini tekuvota.

Sema emadelezi kwadzimate kwaba sebusuku kakhulu, kwate kwaba ngulapho wonkhe umuntfu lobekalindzile sekavotile.





Ngemuva kwaloko, titeshi tekuvota tavalwa. Besekusikhatsi sekubala emavoti.

Besekusikhatsi sekutfole kutsi ngubani bantfu labafuna abuse eNingizimu Afrika.

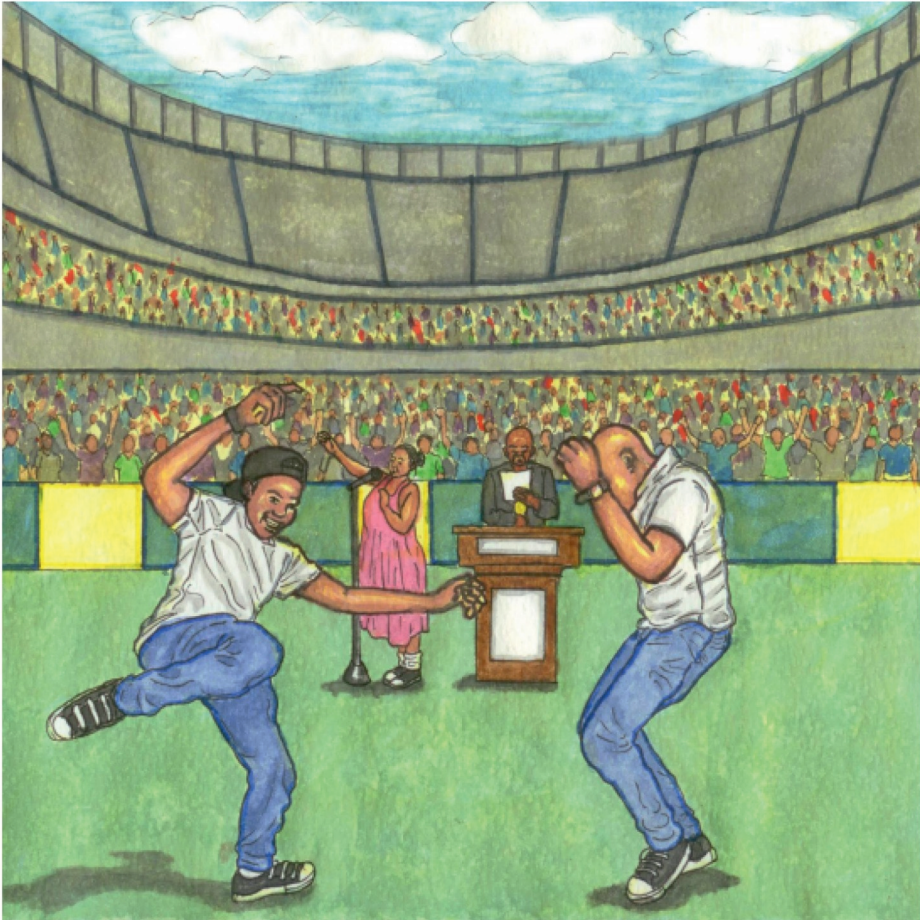
Bantfu labangaba tigidzi leti-20 bavota ngemhlaka 27 ngaMabasa 1994. Savotela hulumende lomusha.



I-African National Congress kwaba licembu lelatfola emavoti lamanyenti.

I-ANC yancoba lukhetfo lwekucala lwenkhululeko!

Nelson Mandela nguye lobekahola i-ANC. Waba ngumengameli wekucala weNingizimu Afrika lekhululekile.



Lohulumende lomusha wenta umhlaka 27 ngaMabasa waba liholide lesive kute bantfu baseNingizimu Afrika bagubhe umkhosi walelilanga minyaka yonkhe. Sigubha umkhosi wentsandvo yelinyenti kanye nemitsetfo lemisha.

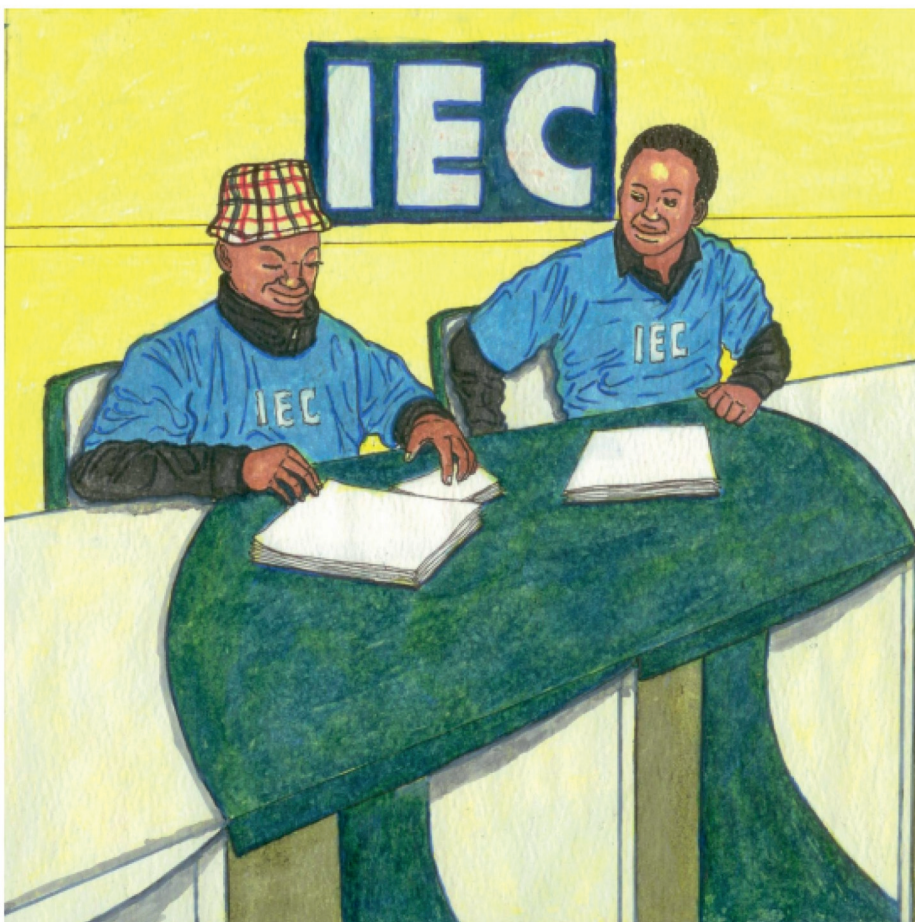
Sigubha umkhosi walelilanga ngekubutsana etinkhundleni temidlalo kuze sibe nemicimbi lekhetsekile. Sigubha lomkhosi ngemculo, ngetinkondlo, kanye nangetinkhulumo.



NgeLilanga Lenkhululeko, sihlonipha bantfu bakitsi labalwela inkhululeko.

Sigubha umkhosi wekuphela kwelubandlululo. Sigubha umkhosi wekutsi wonkhe umuntfu unelilungelo le kuvota.

Senta setsembiso sekucinisekisa kutsi wonkhe umuntfu uyalingana futsi ukhululekile. Nguleyo-ke intsandvo yelinyenti!



Lukhetfo eNingizimu Afrika luhlelwa yi-*Independent Electoral Commission* (IEC).

Lenhlangano yenta sicinisekiso sekutsi lukhetfo “lukhululekile futsi aluvuni luhlangotsi”. Ucabanga kutsi kusho kutsini loko?

Tfola lokwengetiwe nge-*Independent Electoral Commission*. (Ungafundza lokwengetiwe ngayo kuwebusayithi yabo).



## —Imibuto

1. Yini leyenteka ngemhlaka 27 ngaMabasa 1994 eNingizimu Afrika?
2. Bobani labangavota kuhulumende wentsandvo yelinyenti?
3. Yini leyenta umhlaka 27 ngaMabasa waba liholide lesive?
4. Iyini intsandvo yelinyenti?
5. Ngubani lowaba ngumengameli wekucala wentsandvo yelinyenti eNingizimu Afrika?



## —Tincwadzi letikuloluchungechunge

- Lilanga Lekubuyisana
- Lilanga Lenkhululeko
- Lilanga Lemagugu
- Lilanga Lemalungelo Eluntfu
- Lilanga Labomake
- Lilanga Letisebenti
- Lilanga Lalabasha



---

Lencwadzi yetindzaba yentiwe futsi yabhalwa ngeSepedi, njengencenye yephrojekthi yetintfo tekufundza te-Zenex Ulwazi Lwethu ya-2020.