



Letsatsi la basebetsi la 01 Motsheanong ke letsatsi la phomolo mona Afrika Borwa.

Buka ena ke ya nalane ya letsatsi lena la phomolo lehore hobaneng le le bohlokwa.



“Hosane ke letsatsi la phomolo, mme ha ke ya tlameha ho ya sekolong!” ho rialo Tshepo ho ntatae.

“Le nna ha ke ye mosebetsing!” ke ntate yeo.

“Ntate, o etsang ka Letsatsi la Basebetsi?”



“Mamela he Tshepo ke ho bolelle ka letsatsi la Matjhaba la Basebetsi.”

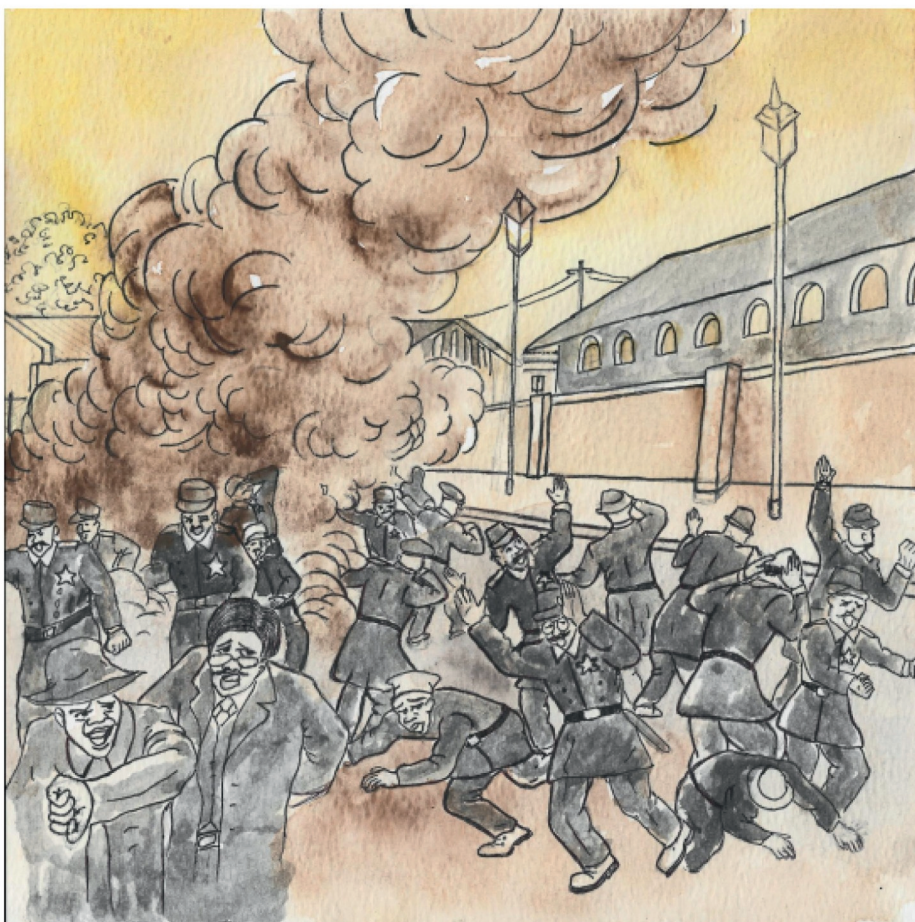
“Letsatsi lena le qadile ha basebetsi ba ne ba lwanela hore ba sebetse hora tse robedi feela ka letsatsi. Ba ne ba sa batle ho sebetsa dihora tse fetang tsena.”



“Ba ne ba sebetsa hora tse kae?” ho botsa Tshepo.

“Ka tlwaelo ba ne ba sebetsa dihora tse leshome kapa tse leshome le motso o le mong,” ho araba ntate.

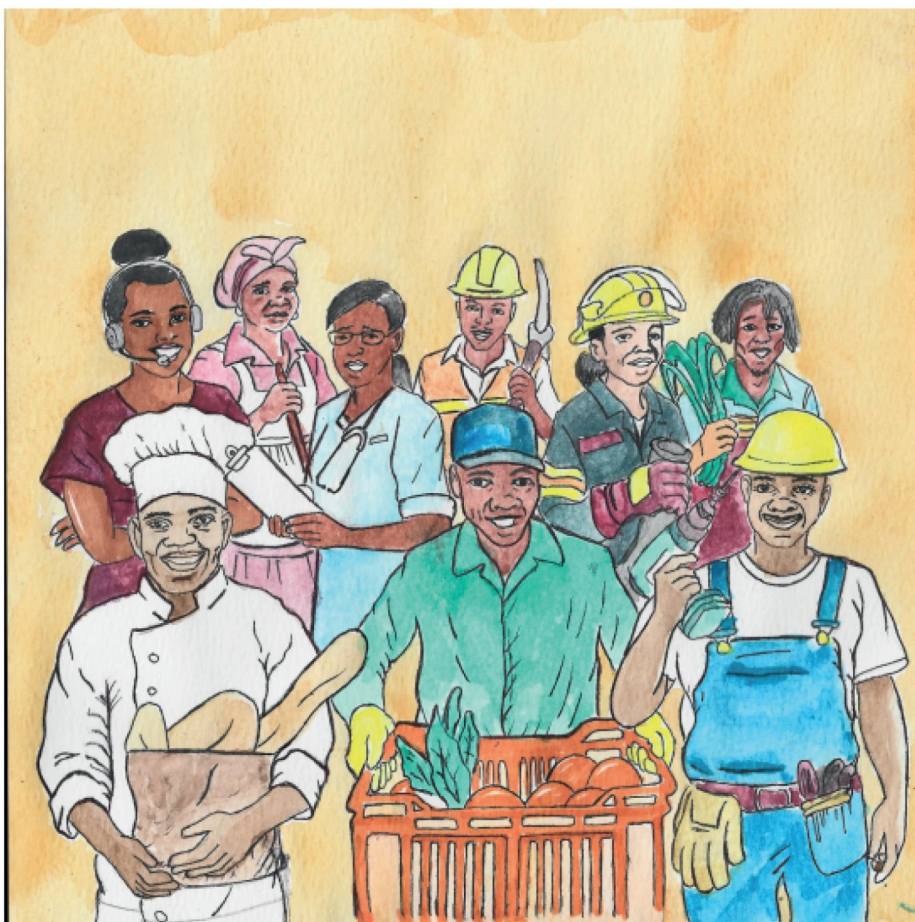
“Ka la 01 Motsheanong 1886, basebetsi naheng ya Amerika baile ba ya seteraekeng e le hore dihora tsa bona tsa tshebetso di fokoletswe ho dihora tse robedi feela ka letsatsi.”



“Boipelaetsong boo, ho ile ha e ba le motho ya akgelang bomo maponeseng.”

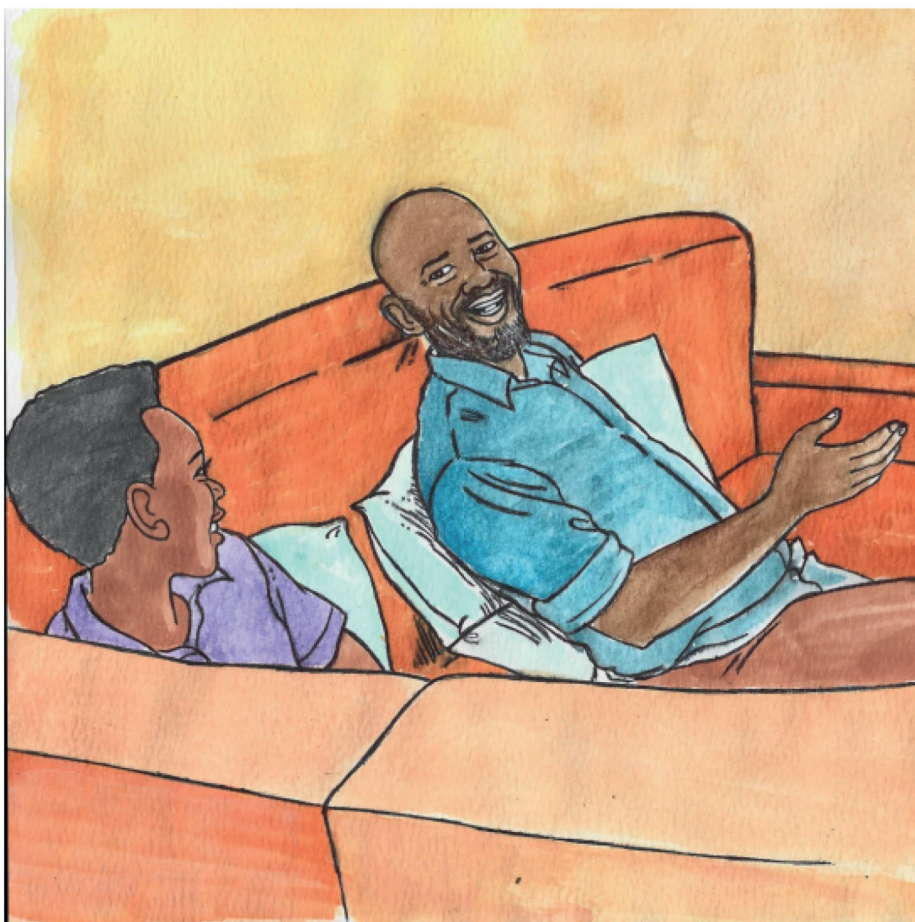
“Yaba ho etsahalang?” ho botsa Tshepo.

“Basebetsi ba bane ba tshwarwelwa ho akgela bomo. Ba fumanwa ba le molato mme ba fanyehwa,” ho araba ntate ka monyebe.



“Lefatsheng ka bophara, basebetsi ba ipelaetsa ka ho bolawa ha basebetsi bao ba bane. Basebetsi bohle ba ema ntswe lenngwe.

Ho tloha tsatsing leo, letsatsi la pele Motsheanong la eba la basebetsi la ho lwanela maemo a matle mesebetsing.”



“Batho ba bang ba bitsa letsatsi lena ‘*May Day*’ mme ke letsatsi la ditokelo le kopano ya basebetsi bohle. Ke letsatsi la matjhaba la phomolo dinaheng tse ngata,” ho hlalosa ntata Tshepo.



“Ka Letsatsi la Basebetsi mona Afrika Borwa re hokahana le dimilione tsa basebetsi lefatsheng ka bophara ho keteka. Mehwanto le dikopano di a hlophiswa.”

“Na haesale e le letsatsi la phomolo mona Afrika Borwa ho tloha ka 1886?” ho botsa Tshepo.



“Tjhe bo!” ho araba ntate ka setsheho. “Mmuso wa kgethollo ka mmala o ne o sa rate hore letsatsi lena le ketekwe.”

“Empa mekgatlo ya basebetsi e ile ya bolella mmuso hore ‘*May Day*’ ke ya rona. Letsatsi la 1 Motsheanong ke la rona!”



“Boipelatso ba basebetsi bo ile ba thusa ho fedisa kgethollo ka mmala. Ka mekgatlo ena ya basebetsi re bapetse karolo e kgolo ho lwanela ditokelo tsa demokerasi,” ke ntate yeo.

“Na o ka noha hore Letsatsi la 1 Motsheanong e bile letsatsi la phomolo neng mona Afrika Borwa?” ho botsa ntate.



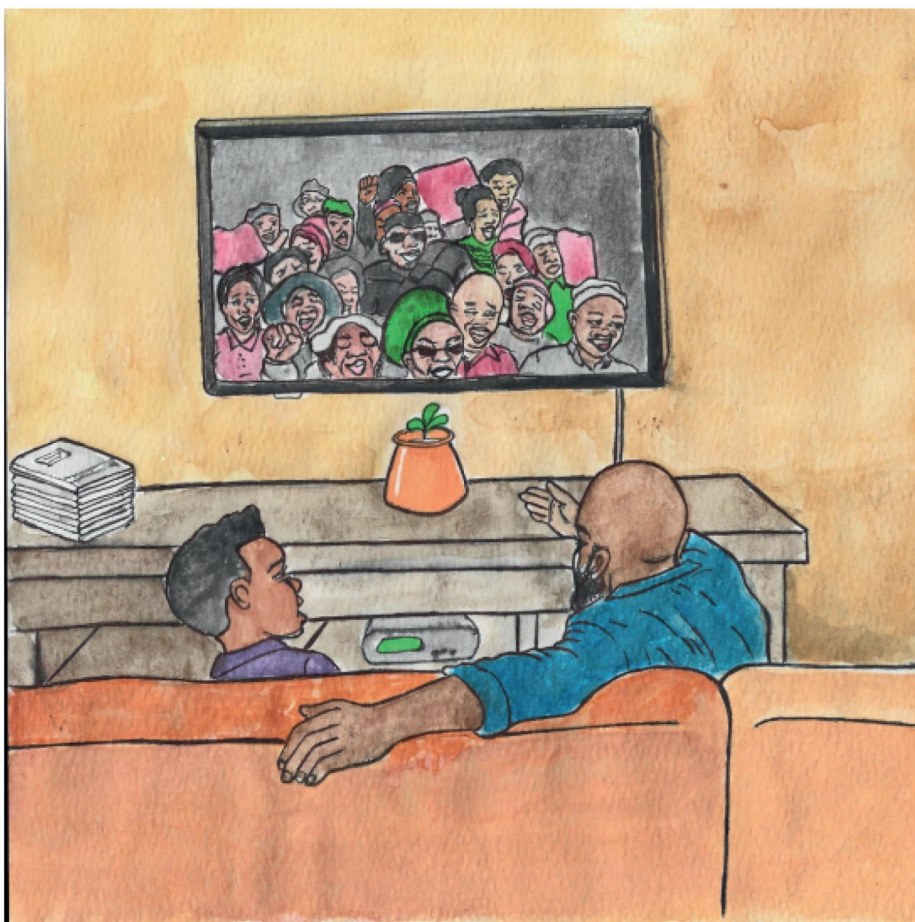
“E seng e bile kamora hore kgethollo? Ha Afrika Borwa e eba naha e lokolohileng,” ho arabaTshepo.

“O nepile. Le ha re ena le demokerasi tje, basebetsi ba bangata ba ntse ba lokela ho lwanela maemo a matle a mosebetsi le meputso e se nang leeme.”



“Ke pheletso ya nalane ya thuto jwale. Ke lokela ho itokisetsa kamoso. Mokgatlo waka wa basebetsi o hlophisitse kopano e kgolo, mme o memme dibui tsa sepolotiki,” ho rialo ntate.

“Wena o lokela ho qeta mosebetsi wa hao wa hae pele ho hosane.”



“Ho lokile ntate jwale ke ya utlwisisa hobaneng ha letsatsi la pele Motsheanong le le bohlokwa ho wena le basebetsi ba bang. Hona jwale ke lokela ho qeta mosebetsi wa sekolo,” o rialo a bososela.



—Dipotso

1. Hobaneng ha Letsatsi la Basebetsi le ketekwa mehleng ena?
2. Basebetsi ba keteka letsatsi lena jwang?
3. Kgothaletsa baithuti ho botsa basebetsi setjhabeng sa bona ka mesebetsi ya bona.



—Lenane la dibuka tse letotong lena

- Letsatsi la Polelano
- Letsatsi la Tokoloho
- Letsatsi la Botjhaba
- Letsatsi la Ditokelo tsa Botho
- Letsatsi la bomme
- Letsatsi la Basebetsi
- Letsati la Batjha



Buka ena e qapuwe le ho ngolwa ka Tshivenḁa jwaloka karolo ya porojeke ya dibuka tse balwang ya Zenex Ulwazi Lwethu selemong sa 2020.