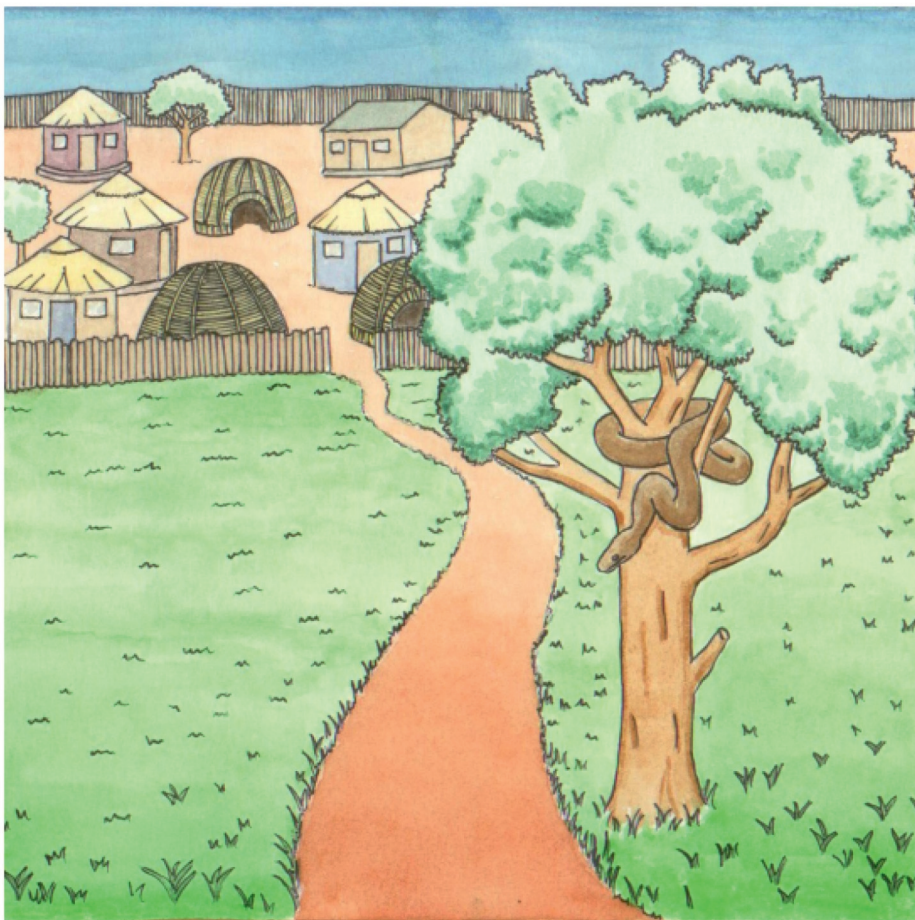




Phumelele o vha e musidzana a bvaho muṭani wa vhashai.

O vha a tshi dzula na muṭa wahawe muḍanani u vhidzwaho Celani.

Ho vha hu na bada nthihi fhedzi ya u dzhena na u bva Celani.



Tsini na bada ya muḡana ho vha hu na muri.

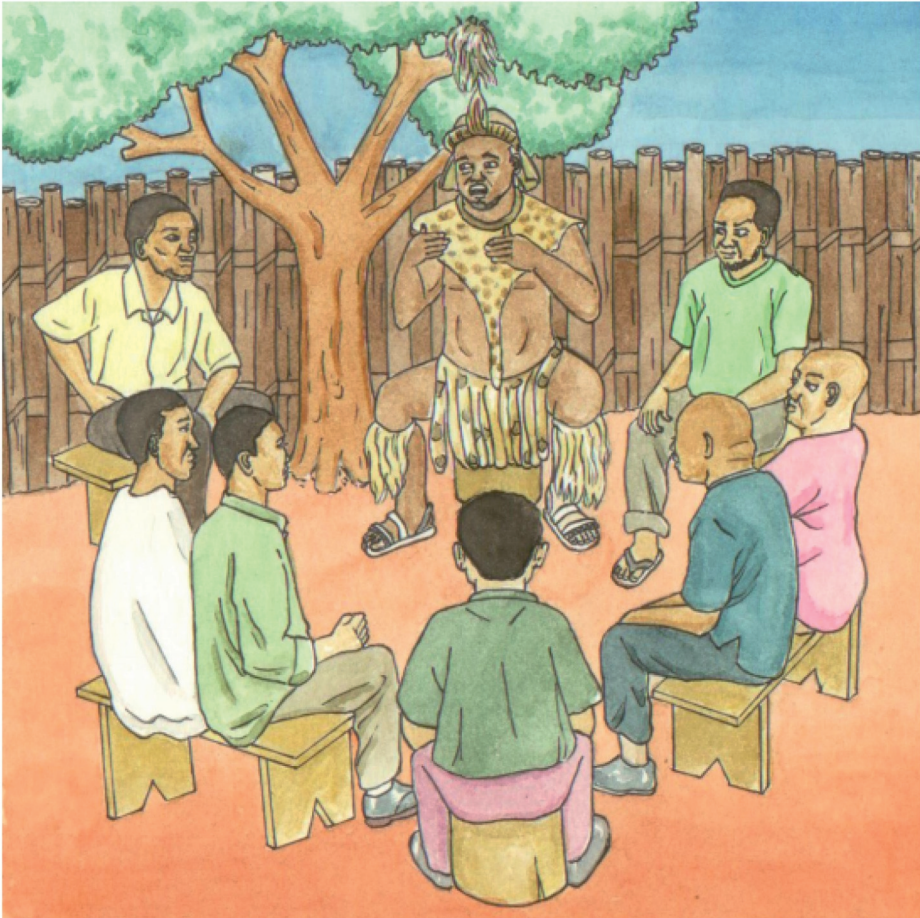
ḲḲḲowa ḲḲḲulwane ḲḲḲo vha ḲḲḲi tshi dzula kha wonoyo muri.

Vhathu vho vha vha tshi fhira wonoyo muri musi vha tshi ya ḲḲḲiniki, mavhengeleni kana tshikoloni.



Musi li tshi pfa mitsindo, liṅowa lo vha li tshi ḡiwisela fhasi badani.

Liṅowa lo vha li tshi konḡisela vhathu vha ṅoḡaho u pfuka. Vhadzulapo vho lingedza u fara liṅowa fhedzi vha kundelwa.



A huna we a kona u fara liḡowa.

Khosi ya amba uri ane a ḡo fara liḡowa u ḡo lambedzwa.  
Vhanna ndi vhone fhedzi vhe vha tendelwa u shela  
mulenzhe kha liḡeneḷo fulo.

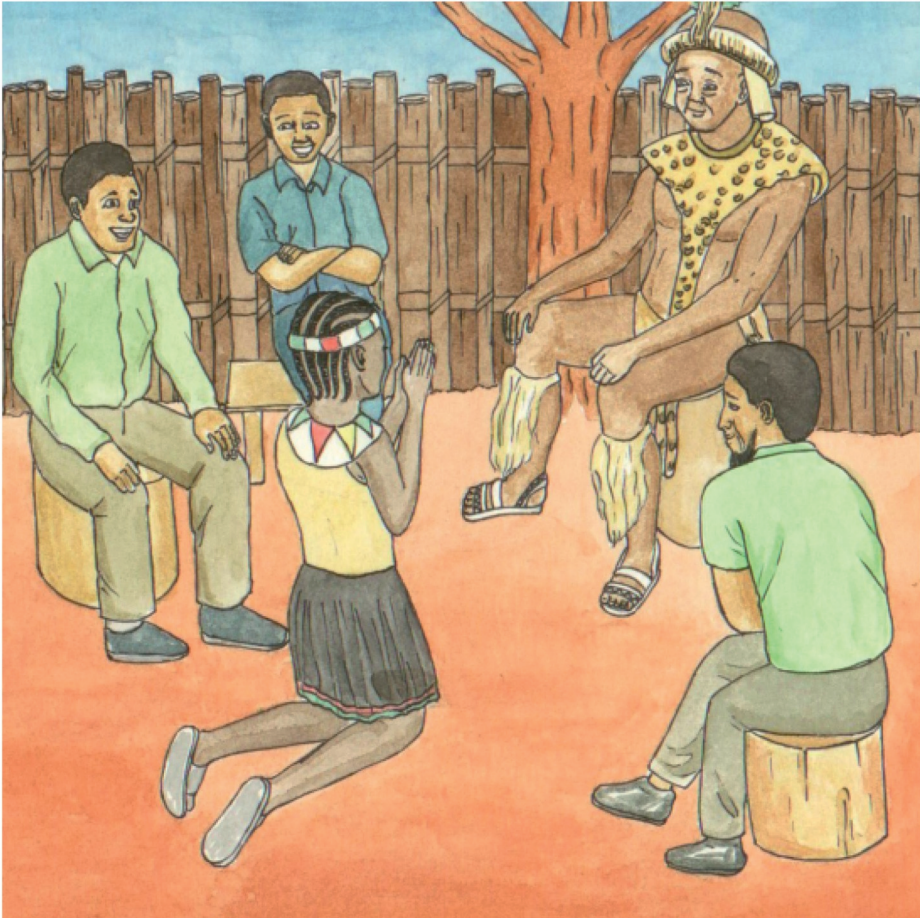


Vhanna vha mirole yoṭhe vho lingedza u fara ḽḽowa fhedzi vha balelwa.

Vho lingedza u shuma sa zwigwada.

Naho zwo ralo, vho kundelwa u fara ḽḽowa.

U dzhena na u bva muḽanani zwo vha zwi khombo.



Phumelele a ya ha khosi a ri, “Kha vha ntendele ndi shele mulenzhe kha heji fulo.”

Vhathu vha mu sea ngauri o vha e mufumakadzi. Vha ri, “U khou swaswa.”

Khosi ya humbula nga zwe Phumelele a zwi humbela.



Mafheleloni, khosi ya ri, “Vhanna vha muvhunduni vho kundelwa u fara liṅowa. A thi nga xeelwi nga tshithu.”

Khosi ya fha Phumelele tshikhala. Fhedzi yo vha i sa fulufheli uri a nga bvelela he vhanna vha kundelwa hone.



Phumelele o vha e na maano a vhuṭali.

A luka manngi muhulwane vhukuma. A u lukela na thambo dzine manngi wa nga vhofhiwa ngadzo uri u valee.

A halwa manngi nṭha ha ṭhoho a livha murini.





Sa nga misi, liṅowa la pfa mitsindo. La dilugiselela u  
ḡiwisela fhasi u ri li thivhe ṅḡila.

Phumelele o vha o dilugisela musi li tshi ita ngauralo!

“ṅamusi ndi ḡo li sumbedza,” u ralo a tshi sendela murini.



Musi liṅowa li tshi ḡiwisa murini, ḡa mbo ḡi wela ngomu ha manngi wo lukiwaho.

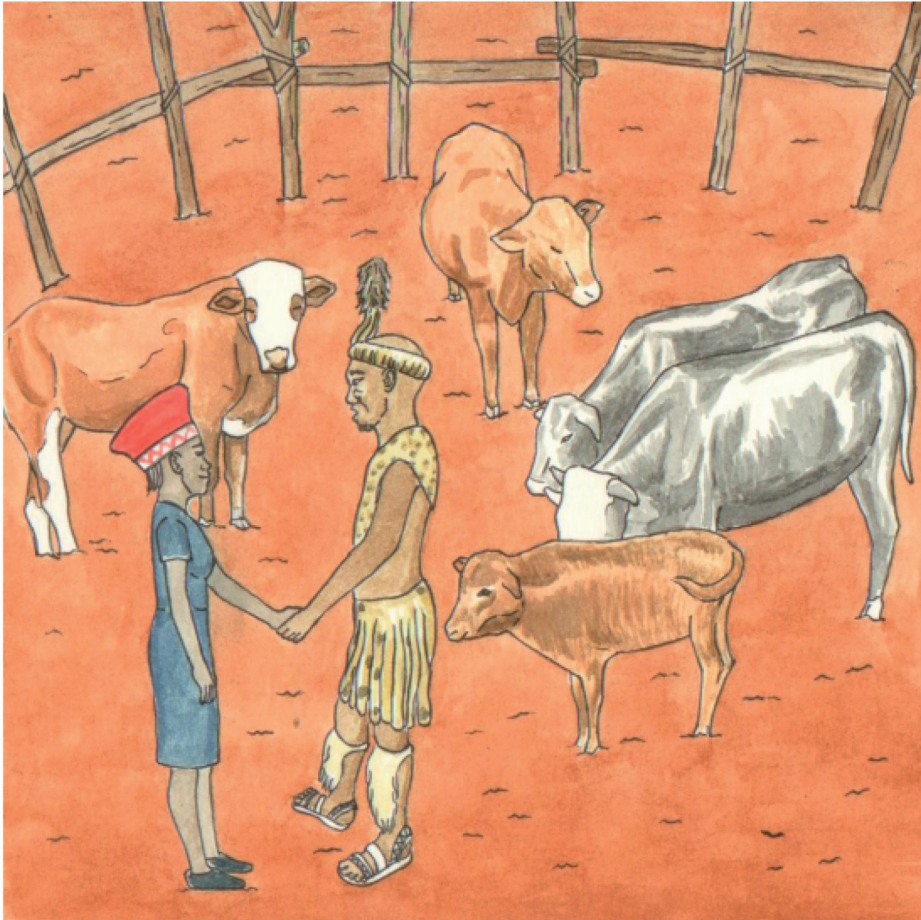
Nga u ṅavhanya Phumelele a vhoḡha thambo dza manngi a u vala. Liṅowa ḡa valelwa nga ngomu.



Phumelele a hwala manngi u re na liḡowa a ya muḡanani.

Vhathu vhoḡhe muḡanani vha mu renda musi a tshi dzhena khoroni dza pfamo ya khosi.

Vhathu vha ri, "Phumelele o ḡalifha nahone u na tshivhindi. Khosi i fanela u ita zwe ya fulufhedzisa."



Khosi ya űea Phumelele tshipiᄁa tshihulwane tsha shango na danga ʘo ᄁalaho kholomo.

A vha murangaphanᄁa wa tshenetsho tshipiᄁa tsha shango. Vhathu vha ya khae u wana nyeletshedzo.

ʘiᄁowa ʘa dzhiiwa ʘa iswa hune ha fuiwa dziᄁowa, vhathu vha kona u tshimbila vho vhofoholowa.