



Lihle na Lwandle vha guda nga vhuriha

Ndivhuho Mutsila
Vusi Malindi





Lihle na Lwandle vha khou ya ǁisuthu u dalela malume wavho nga bisi.

Ndi Iwa u thoma vha tshi dalela shango ǁeneǁi ǁitukutuku, nṱhanṱha dzithavhani.



Mukomana na murathu vha guda zwithu zwo vha tangaho vhe bisini.

“Hu na mahada hothehothe!” Lwandle u kha ganuko.

“A tou nga nguvho tshena ndenya yo adzaho hothe,” hu tenda Lihle.



Lwandle a ri, “Ndi a takala ngauri bisi i na hithara!”.

“Ee, nḡa hu khou rothola. Thempheretsha dza vhuriha dza fhanḡ dzi vha fhasifhasi,” hu amba Lihle.



“Thempheretsha dza vhuriha fhana Lisuthu dzi fhasi kha dza hayani Limpopo,” Lihle u isa phanda.

“Brrr, ndi fulufhela uri ndo paka zwiambaro zwa vhududo zwo eḡanaho,” hu amba Lwandle.



Bisi ya swika, vhasidzana vha imisela zwanḁa malume wavho. Vho ambara dzhasi lihulu, tshikhafu na muḁadzi.

“Ee-ee!” Lwandle u khou tetemela musi a tshi tsa bisini.



Dzhesi dza vhasidzana ndi tsekene a si dza mutsho wa fano.

Malume vho ḍela vhaḍuhulu vhavho nguvho dzo nakaho dza vhududo.

“No ṭanganedzwa fano phephoni!” vha tshi lumelisa.



“Thogomelani ni tshi tshimbila, fhasi hu na ayisi hu a suvha,” vha tshi sevha.

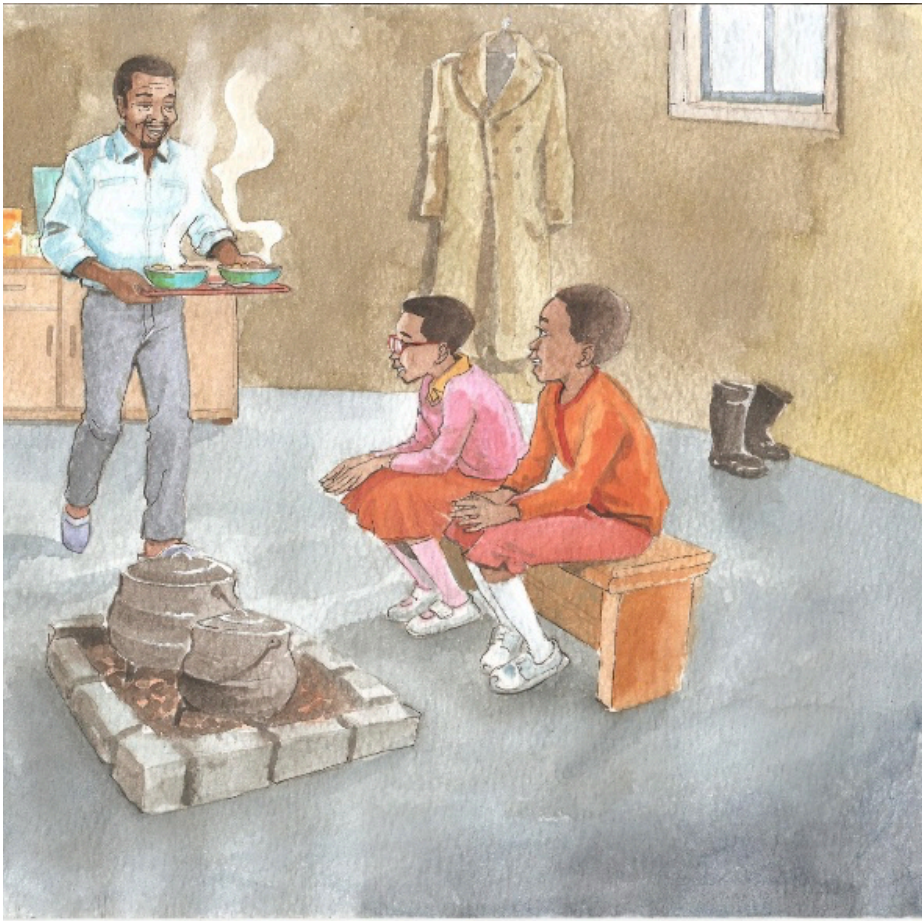
Vha fhira sambi lituku la nngu dza wulu dzo kuvhangano uri dzi dudele.



Hatsi vhu re fhasi ha mahaḡa ho oma nahone vhu buraweni.

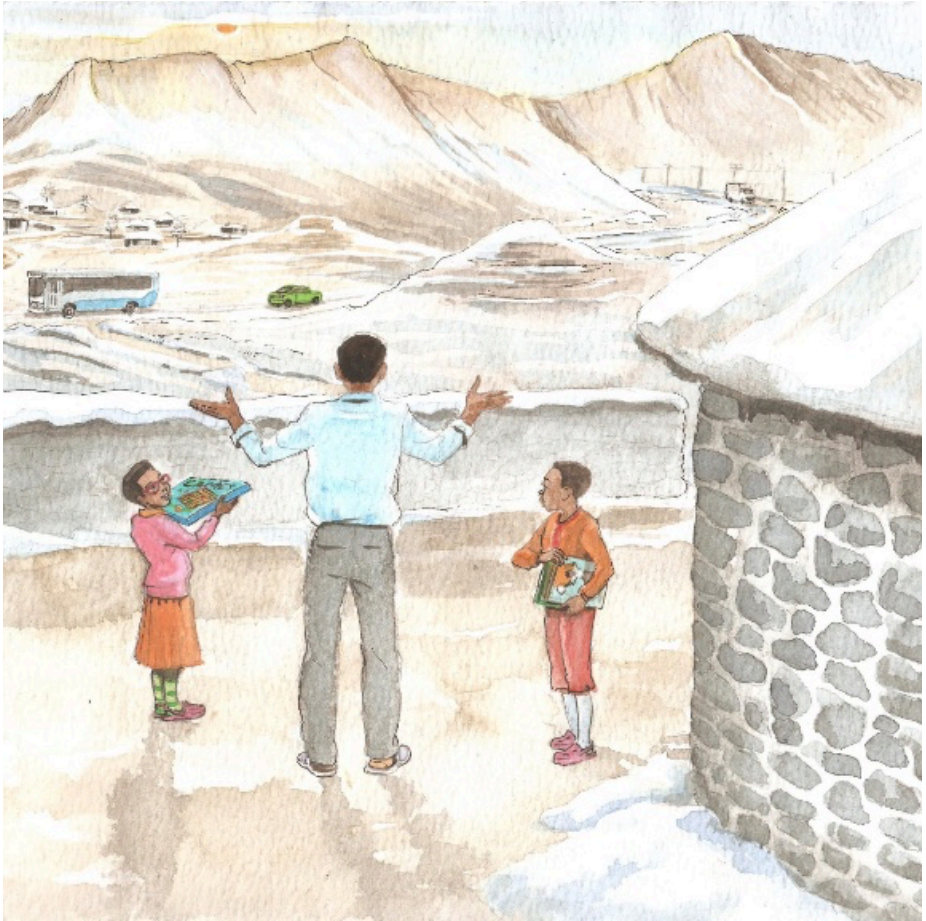
Pfulo ya zwifuwo a si nnzhi.

Vhuriha zwimela zwinzhi a zwi aluwi kana zwi a fa.



Vhasidzana vha dzula muliloni tshixangani tsha malume.

Vha vha fha nama ya kholomo na madabula a fhisaho. "Zwixiwa zwa sialala zwa Lekhotloane, zwi do ni dudedza," vha tshi amba.



“Nga vhuriha, ḁuvha ḁi a lenga u tsha ḁa ḁavhanya u kovhela. Ri ḁo ḁwa nduni,” hu amba Malume.

“Ro ḁa na dzibugu na mitambo!” vhasidzana vha fhindula mazha.

—Mbudziso

1. Lihle na Lwandle vha ngafhi?
Wanani afho fhethu kha mapa.
2. Ndi khalañwaha ifhio?
3. Wanani maipfi mararu a
ṭalutshedzaho khalañwaha iyo.
4. Nwalani zwiambaro zwiṅa zwa
vhuriha.
5. Vhuriha ha Lisuthu vhu a fana na
hune na dzula hone? ṭalutshedzani.
6. Ni takalelesa vhuriha ha ngafhi?
Ndi ngani?



Ulwazi Lwethu is a Zenex Foundation funded and initiated project to develop a series of graded and leisure African language readers and teacher support materials. This project is targeted at teaching and supporting learners in the Foundation Phase to improve their home language reading and understanding. The readers have been originated in nine African languages in collaboration with Molteno Institute for Language and Literacies, Nelson Mandela Institute for Education and Rural Development, Room to Read South Africa, and Saide. All resources are developed as Open Education Resources (OER).



Your attribution should include the following:

Title: Lihle na Lwandle vha guda nga vhuriha

Author/s: Ndivhuho Mutsila

Illustrator/s: Vusi Malindi


Assurer/s: Tshedza Tlhako, Doris Manyamalala

Language: Tshivenda



© Zenex Foundation - Saide 2023

CC BY includes the following elements:

BY  - Credit must be given to the creator

