



Lihle le Lwandle ka mariga

Ndivhuho Mutsila

Vusi Malindi





Lihle le Lwandle ba tsaya leeto ka bese go etela malomeabone kwa Lesotho.

Ke leeto la bone la ntlha go ya kwa nageng e nnye e e mo godimo ga dithaba.



Basetsana ba sekaseka tikologo ba le mo beseng.

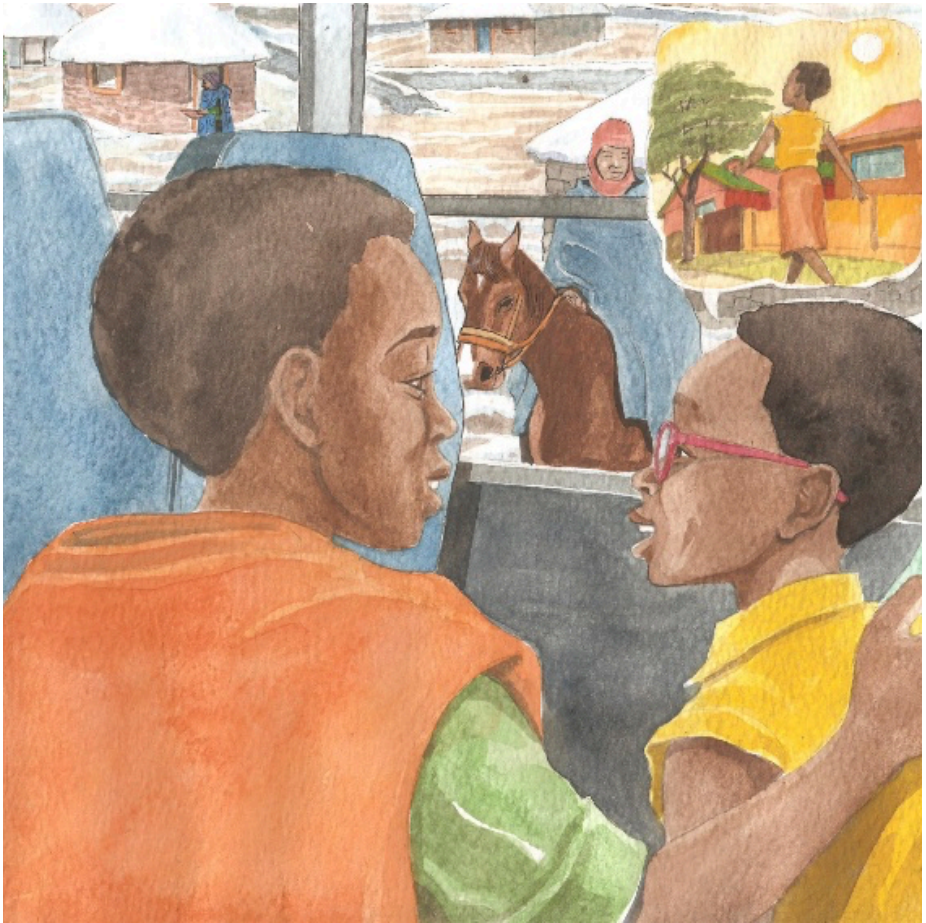
“Go na le semathane gotlhe!” ga bua Lwandle.

“E kare kobo e tshweu e kima e e apesitseng dilo tsoithe,” ga dumela Lihle.



“Ke itumelela gore mo teng ga bese eno go bothito!” Lwandle a makala.

“Ee, go tlaa nna tsididi kwa ntle. Dithempereitšha tsa mariga tsa mo lefelong leno di wela kwa tlase ga boswagapetla,” ga rialo Lihle.



“Dithempereitšha tsa mariga kwa Lesotho di tsididi thata go feta tsa kwa gae kwa Limpopo,” ga tswelela Lihle.

“Brrr, ke solofela gore ke phuthile diaparo tse di lekaneng tse di bothito,” ga rialo Lwandle.



Bese e a goroga mme basetsana ba gwetha malome wa bone. O apere jase e kgolo, sekhafo, le hutshe.

“Ee-ee!” Lwandle a roroma fa a tswela kwa ntle.



Dijeresi tsa basetsana di botsatsa thata go emelana le thempereitšha ya lefelo leno.

Malome o tletse batlogolo dikobo tse dintle tse di bothito.

“Ke a le amogela mo marigeng!” a dumedisa.



“Ela tlhoko moo o tsamayang teng, fa fatshe go gatsetse mme go a reledisa,” a ba lemosa.

Ba feta sethophanyana sa dinku tsa boboaboa di kgobokane gore di thutafale.



Ka fa tlase ga semathane, majang a omile a masetlha.

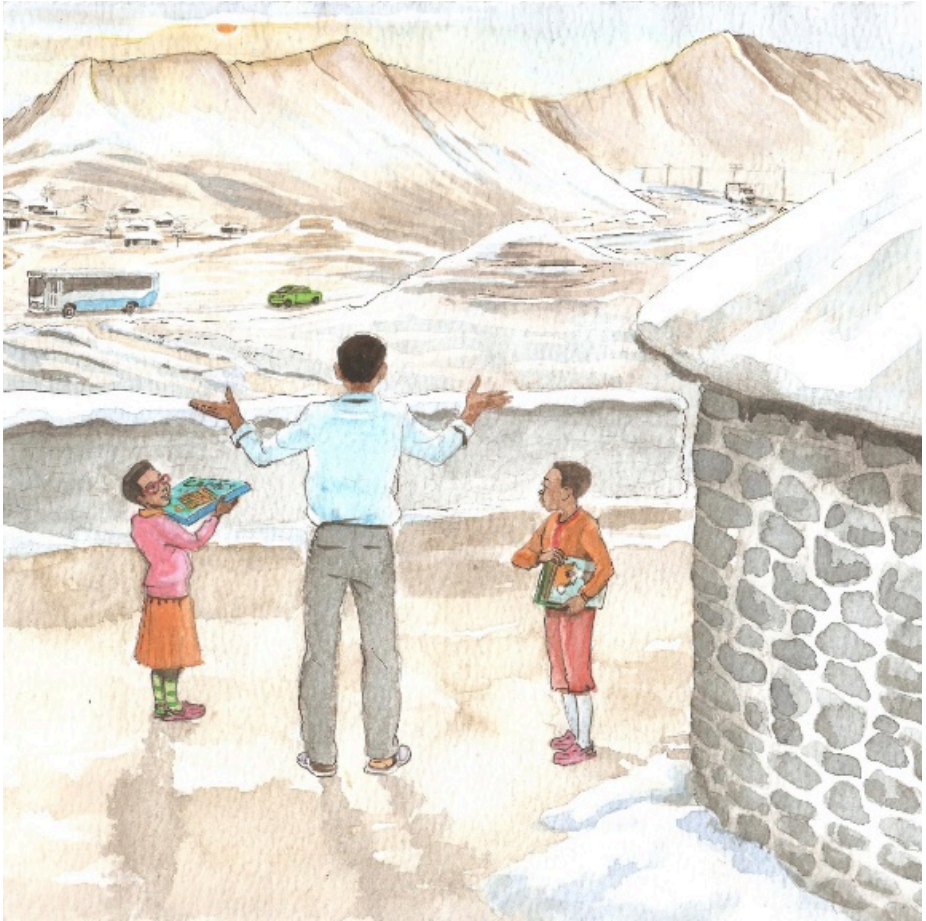
Ga go na bojang jo bontsi jo diphologolo di ka bo fulang.

Dijalo tse dintsi di emisa go gola kgotsa di a swa mariga.



Basetsana ba nna fa molelong mo ntlwaneng ya malomeabone.

O ba fa nama ya kgomo le ditapole tse di kuang mosi. "Lekhotloane le la setso le tlaa le thutafatsa," a rialo.



“Ka mariga, letsatsi le tlhaba thari, mme le phirima ka pele. Re tlaa nna diura mo tlung,” Malome a rialo.

Re iketleeditse seo ka dibuka le metshameko!” basetsana ba buela gongwe.

—Dipotso

1. Lihle le Lwandle ba kwa kae? Batla lefelo leo mo mmepeng.
2. Ke setlha sefe?
3. Batla mafoko a le 3 a a tthalosang setlha seno.
4. Neela diaparo di le 4 tsa mariga.
5. A mariga a Lesotho a tshwana le mariga a kwa o nnang teng? Tthalosa.
6. Ke mariga afe a o a ratang thata? Ka goreng?



Ulwazi Lwethu is a Zenex Foundation funded and initiated project to develop a series of graded and leisure African language readers and teacher support materials. This project is targeted at teaching and supporting learners in the Foundation Phase to improve their home language reading and understanding. The readers have been originated in nine African languages in collaboration with Molteno Institute for Language and Literacies, Nelson Mandela Institute for Education and Rural Development, Room to Read South Africa, and Saide. All resources are developed as Open Education Resources (OER).



NELSON MANDELA
INSTITUTE FOR
EDUCATION AND
RURAL DEVELOPMENT



Room to Read®
World Change Starts with Educated Children®

Your attribution should include the following:

Title: Lihle le Lwandle ka mariga

Author/s: Ndivhuho Mutsila

Translator/s: Opelo Thole

Illustrator/s: Vusi Malindi


Assurer/s: Dineo Moatshe

Language: Setswana



© Zenex Foundation - Saide 2023

CC BY includes the following elements:

BY  - Credit must be given to the creator

