



Ngaloo mini uXikochimani wavuka kwangentseni.

Wayengomnye wabo bafika kuqala esikhululweni seebhasi neeteksi.

UXikochimani wayeqala ukuzihambela yedwa.



Wayesiya edolophini enkulu kuTatomkhulu wakhe
onguGalela.

Ngesiqophe kwabakho indoda eyabiza amagama eendawo
azaziyo uXikochimani.

“Yiza, iyahamba ibhasi,” yakhwaza le ndoda.



Yayisele iza kugcwala ibhasi. Wema uXikochimani elindele ukukhwazwa kwenombolo yetikiti lakhe.

Ikhona inkwenkwe eyayixabile kumnyango webhasi.

Waphelelwa ngumonde uXikochimani.



Isihlalo sikaXikochimani sasingasefestileni,
wayengakwisibini ekwakusithiwa nguRhulani
noMadzivandlela.

Ubushushu benza abantu babile kuloo bhasi.



Abathengisi bangena ebhasini belandelelana, kunjalo babengxola kakhulu!

Babethengisa isiselo esibandayo, iibhanana, iilekese, iindidi zenyama namanye amashwamshwam.



UMadzivandlela wakhupha imali esifubeni kuye, wathenga isiqhamo kwindoda eyayibukeka incumile.

Wayibeka phantsi incwadi yakhe, waqalisa ukusonwabela, esiluma kancinci.



Umqhubi webhasi wangena kuyo, wababulisa ababephakathi kuyo. “Pholani nonwabele uhambo,” wakhwaza esitsho.

UMzamani wayeliphinda naliphi na igama elithethiweyo ngumqhubi webhasi!



Indlela eyayisiya edolophini enkulu yayinde kunjalo inamajikojiko.

UXikochimani wayechwayitile ebukela imbonakalomhlaba eguqukayo ngeli xesha yayihamba ibhasi.



Kwakuseshushu phakathi ebhasini nangoku lalitshona ilanga. Abahambi babebile xhopho kunjalo besozela.

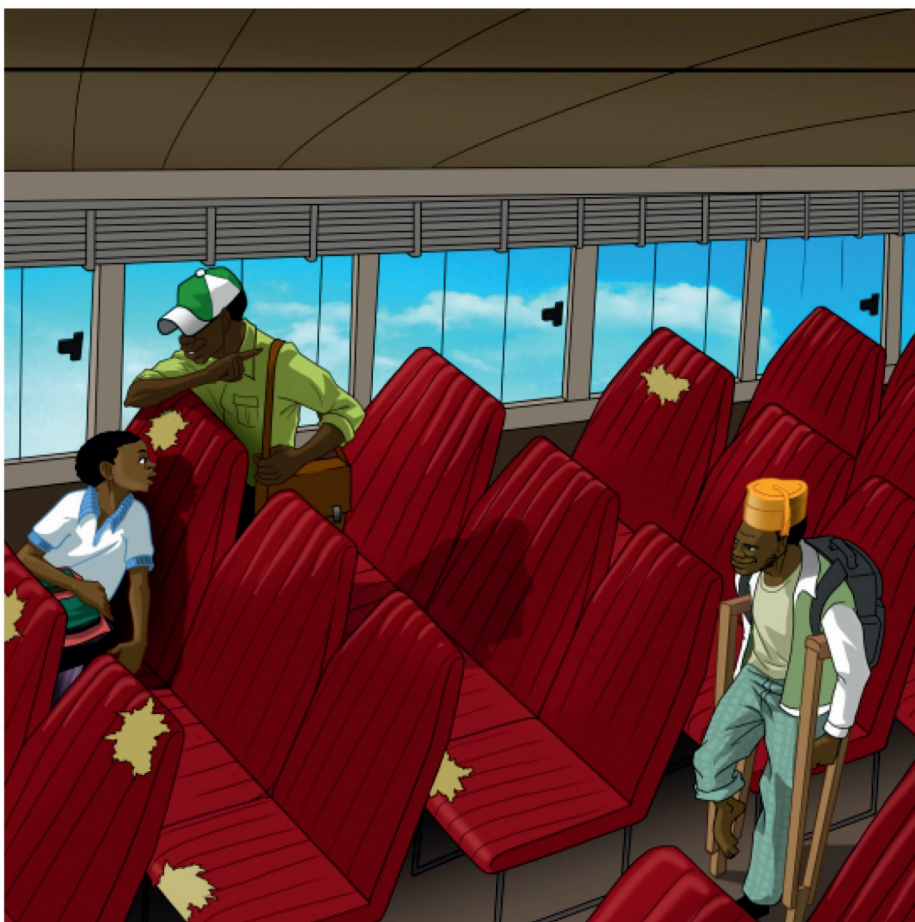
Akuziva esozela uRhulani wayibamba nkqi ibhegi yakhe.



Balala yoyi uXikochimani, uRhulani noMadzivandlela.

Wayerhona kakhulu uMadzivandlela.

Balala kamnandi ngeli xesha ibhasi yayiqhutywa ngobo busuku.



Kukho isandla esasishukumisa igxalaba likaXikochimani kancinci. Wada waphaphama.

“Esi sisitishi sokugqibela. Uyaphi?” yabuza indoda eyayisemva koXikochimani.



Waphuma ebhasini uXikochimani.

Zange abone mntu amaziyo.

Wazixelela le nto, “NdinguXikochimani kaRhulani, kaGalela, kaXihimu. Ndiza kufika kwikhaya likatatomkhulu.”