



Matsavu ma kahle eka hina

Busile Cynthia Ndlovu

Tammi Mbambo





Xipinachi i matsavu ma matluka. Matluka ma kona ma kula ehenhla ka misava.

U nga ma dya ma swekiwile kumbe ma nga swekiwanga.

Xipinachi xi kahle eka mani na mani.

Matsavu ma kahle eka hina!



Khavichi i matsavu man'wana ma matluka lawa ma kulaka ehenhla ka misava.

Khavichi yi kahle loko yi nga swekiwanga eka tisaladi naloko yi swekiwile.

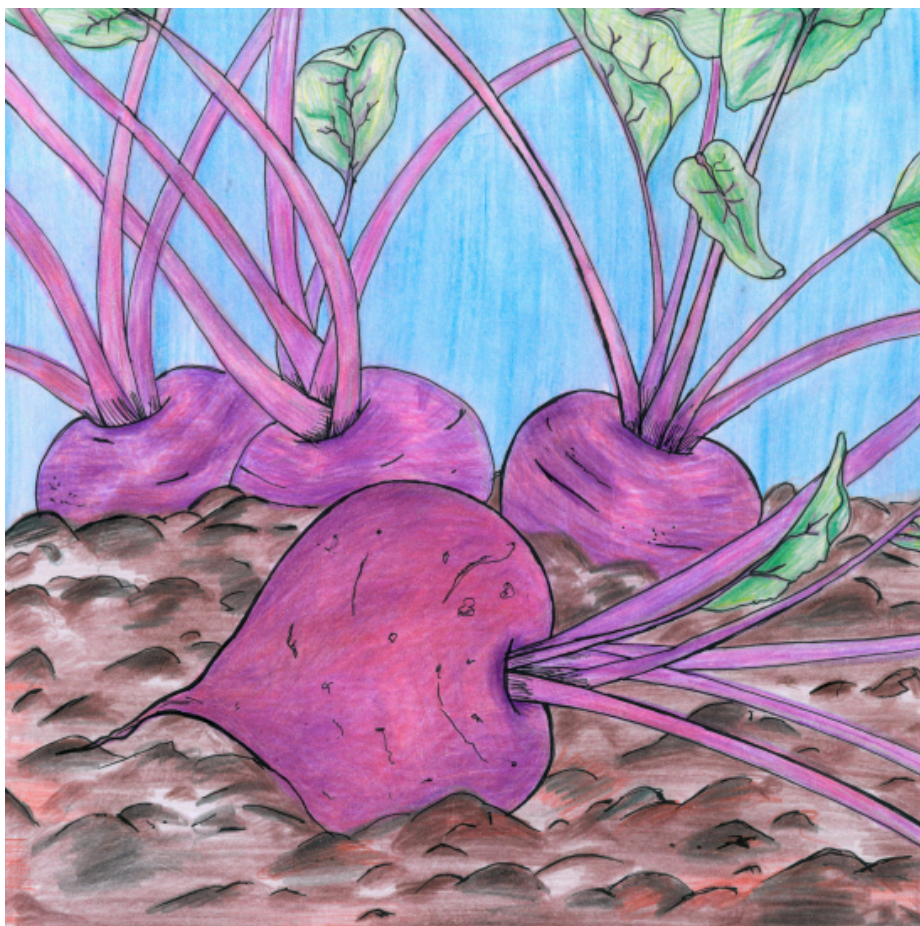
Switsutsu na swisiwana swi fanele kudya khavichi leswaku va va ni mimiri leyi hanyeke kahle.



Tikheroti i matsavu ma timitsu. Ti kulela ehansi ka misava.

Tikheroti ti tala ku va ta orenji. Ti tisa mihlovo eka swakudya.

Tikheroti ti endla leswaku mahlo ma hina ma tshama ma hanyile kahle.



Matsavu ma n'wanyana i bitiruti. Yi tala ku va ya muhlovo wo tshwuka.

Bitiruti yi tala ku dyiwa loko yi swekiwile, kambe u nga yi dya yi ri yimbisi.

Bitiruti yi endla leswaku timbilu ta hina ti hanya kahle.



Makwembe ma kulela ehenhla ka misava.

Hi tala ku sweka makwembe.

Makwembe ma hambana hi muhlovo. yan'wani i ya xitsopana, rihlaza, kumbe orenji. Makwembe ma na mbewu yo tala.

Makwembe ma pfuna mimiri ya hina leswaku yi tshama yi hanyile kahle.



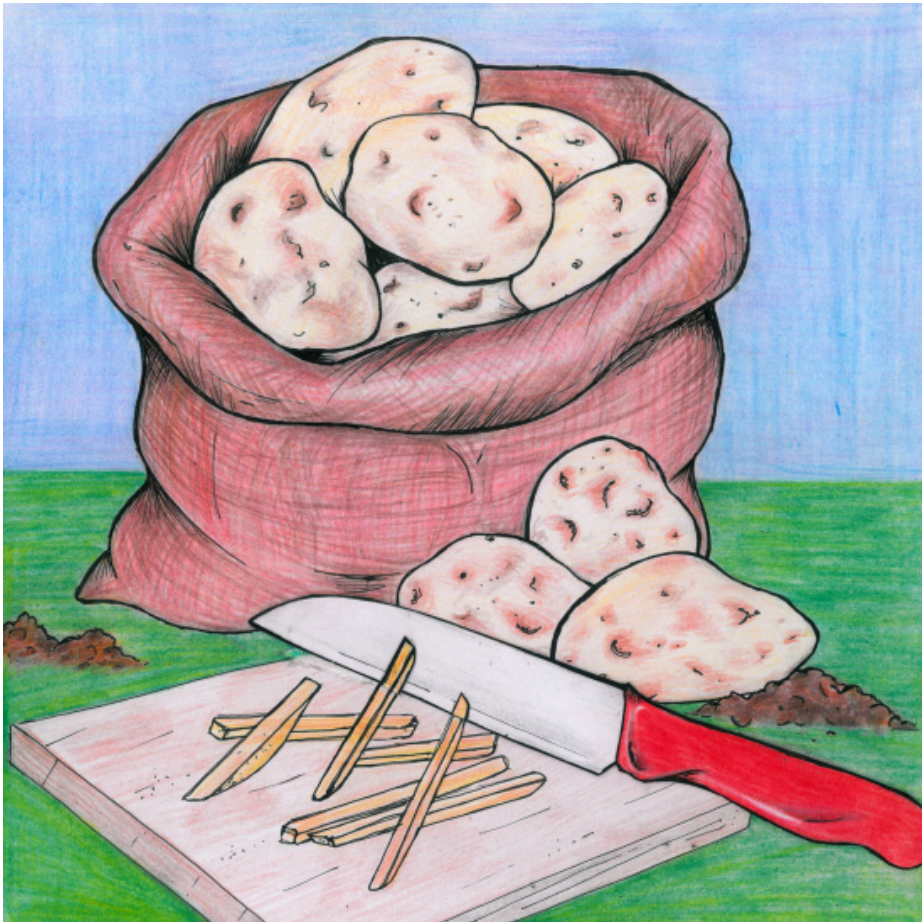
Matamatisi ma kulela exikhwatanini kumbe hi ku boheleriwa.

I ma rihlaza loko ma ha kula naswona ma tala ku va mo tshwuka loko ya vupfile.

I ma xirhendzevutana kumbe ma fana ni tandza hi xivumbeko.

Ma kahle loko ma dyiwa ma nga swekiwangi na loko ma swekiwile.

Matamatisi ma na mbuyelo wa kahle wa swa rihanyo. Ma nga tirhisiwa tanihi murhi.



Matapula ya kula ehansi ka misava tani hi marhanga.

Matapula ma tala ku va ma xivumbeko xa tandza na ku va makamba ma mpungha, naswona i mo basa endzeni.

Matapula ma fanele ku swekiwa loko u nga si ma dya.



Tinyala i matsavu ma rhanganga lama ma kulelaka ehansi ka misava. Ti tala ku va to basa endzeni.

Tinyala ta swekiwa kumbe ti dyiwa ti ri timbisi (hi nhlayo leyitsongo).

Matsavu ma pfuna ku sirhelela mimiri ya hina eka mavabyi.



Ulwazi Lwethu is a Zenex Foundation funded and initiated project to develop a series of graded and leisure African language readers and teacher support materials. This project is targeted at teaching and supporting learners in the Foundation Phase to improve their home language reading and understanding. The readers have been originated in nine African languages in collaboration with Molteno Institute for Language and Literacies, Nelson Mandela Institute for Education and Rural Development, Room to Read South Africa, and Saide. All resources are developed as Open Education Resources (OER).



NELSON MANDELA
INSTITUTE FOR
EDUCATION AND
RURAL DEVELOPMENT



Room to Read®
World Change Starts with Educated Children®

Your attribution should include the following:

Title: Matsavu ma kahle eka hina

Author/s: Busile Cynthia Ndlovu

Translator/s: Hlongwani Hlongwani

Illustrator/s: Tammi Mbambo


Assurer/s: Arnold Mushwana, Bongani Maluleke

Language: Xitsonga



© Zenex Foundation - Saide 2023

CC BY includes the following elements:

BY  - Credit must be given to the creator

