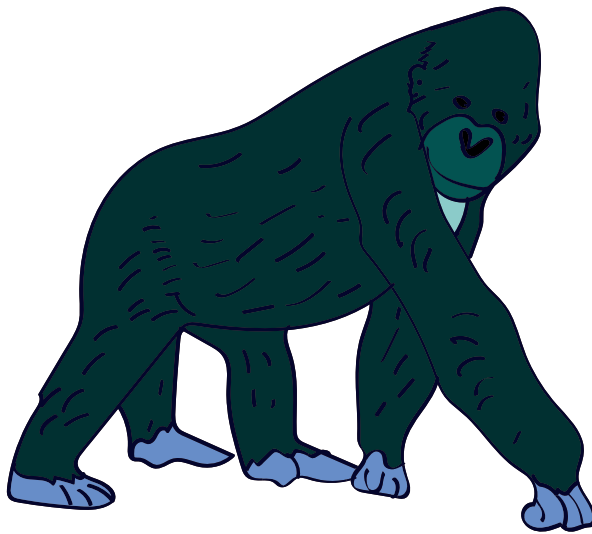


Nyama yá mbóá ásū

Duálá



Auteur : Soppi Ebondji Louise

Illustrations : Maureen Etondi

Design : Victoire Samè

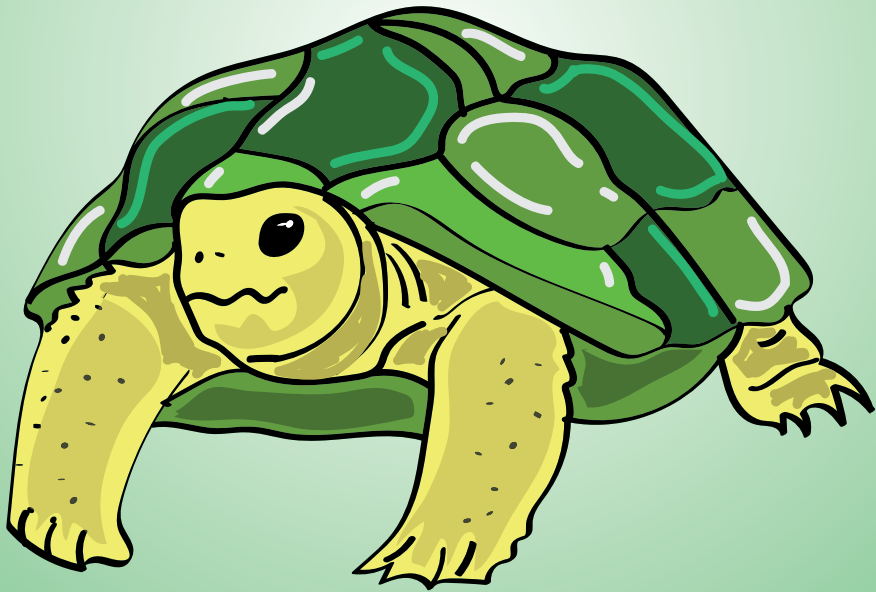
Mbó ni e ndé dikóm
lá moto a benama.



Síngi e mapáŋgá
púe ó ndábo.



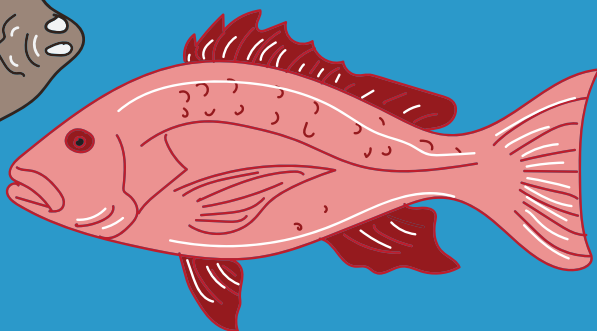
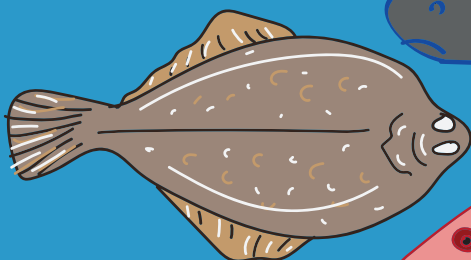
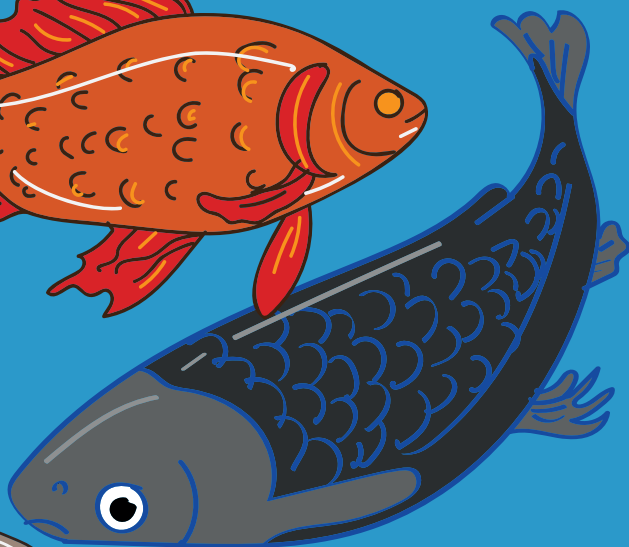
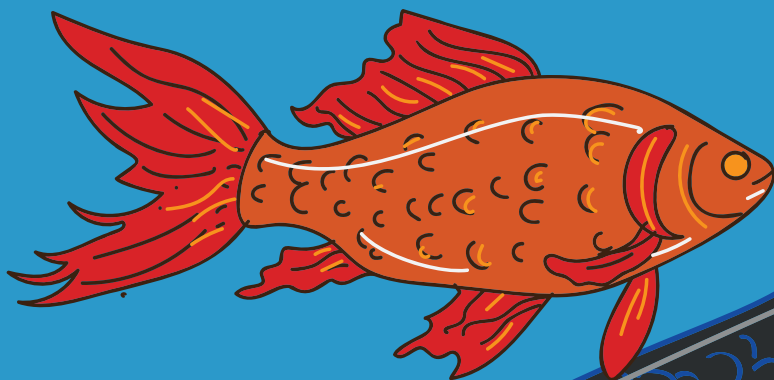
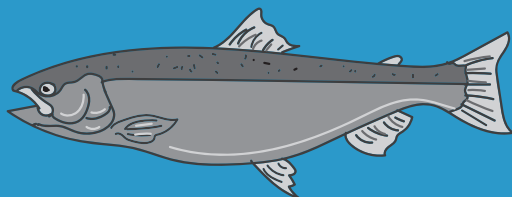
Wúdu ni e ndé
nyama a misómbá.



Ngila ni e ndé ngum
a bonanyama.



Súe yí e patí jǐta.



Ewaxe yi é ndē
bowân ka moto
a benama.



ηγοά e kíyέ
jčkελέ ó díβô.

