



Maemu u Wana Khonani

Heyi bugu yo thoma i kha isiZulu yo n̄walwa nga Busi Maphumulo
Yo oliwa na u dzudzanyiwa nga Jess Jardim-Wedepohl



Yo t̄alutshedzelwa u bva kha isiZulu nga Hulisani Olga Tshisevhe



WORLD BANK GROUP



Room to Read®



INDWA PUBLISHERS
Flying High





Maemu o dzula na mmane wawe,
e musidzana o thanyaho a shumaho
vhukuma. Mmane wawe vha sa mu fari
zwavhudi. Vha tshi mu shumisa lwo
kalulaho hayani.





Duvha l̄inwe na l̄inwe a tshi imba:

“Zwi ḁo guma lini u dzula ndi ndoṯhe,
ndi tshi kiswa maḁi,
na u limiswa tsimuni.
Zwi ḁo guma lini?”

U fhedza u imba a ya a ka maḁi mulamboni.
A tshi vhuya mmane vha mu ṅekedza dzembe.
Maemu o vha a tshi vhenḁa u limiswa.





Liñwe ðuvha Maemu a tshi swika tsimuni
a wana ho no limiwa.

Ho dzula luñwe lusidzana fhasi ha tanga la livhele.
“Ndo ða u ni thusa,” hu amba Lusidzana.

Maemu a sea a ri ndi ðo u vhidza uri Mupfufhi ngauri u
lingana na gunwe langa. Dzhenai tshikwamani tshanga
uri mmāne wanga vha si u vhone.



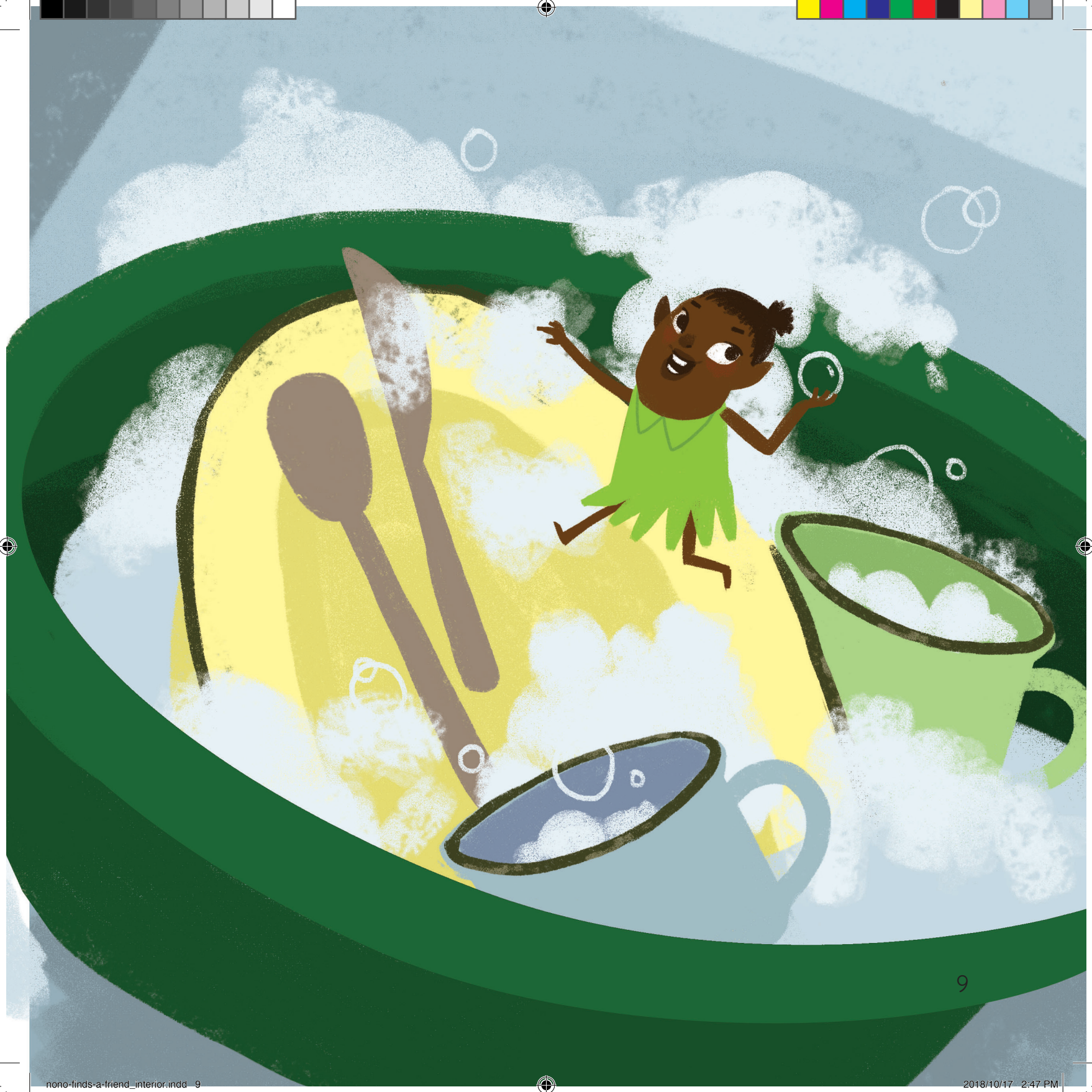


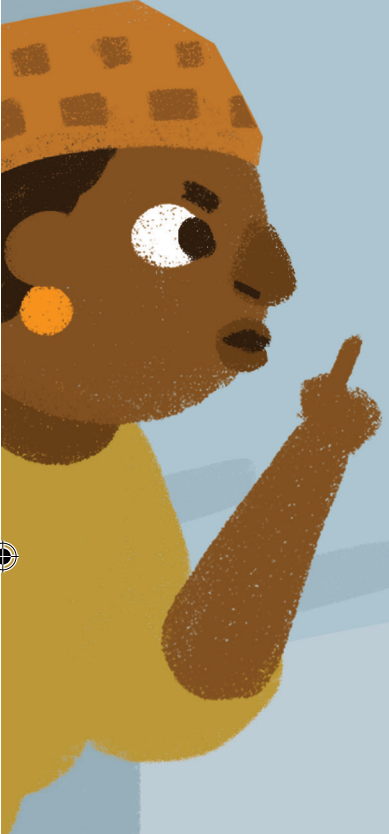


“Ndi do ni tanzwela ndishi dzothe, Maemu.”
ndi Mupfufhi a tshi amba. “Ni nga awela.”

Mmane vha tshi vhona khishi yo kuna
vha mangala. “No shumesa nga maanda
namusi Maemu. Zwi khou ya hone,
ni vho kona mishumo.”

Maemu a takalela u khoḏiwa.
“Mmane ndi khou humbela u edela u
tavhanya, ndo netesa.”





Maemu a vho tamba na Mupfufhi
a so ngo edela.

Mmane vha vho khokhonya vha
tshi toḁou ḁivha uri phosho ndi
ya mini.

Maemu a ri u khou lora. “Idani
ri edele roṁhe arali ni tshi khou
ofha,” hu amba Mmane.

Maemu a hana u ya u edela na
mmane, zwa takadza Mupfufhi.



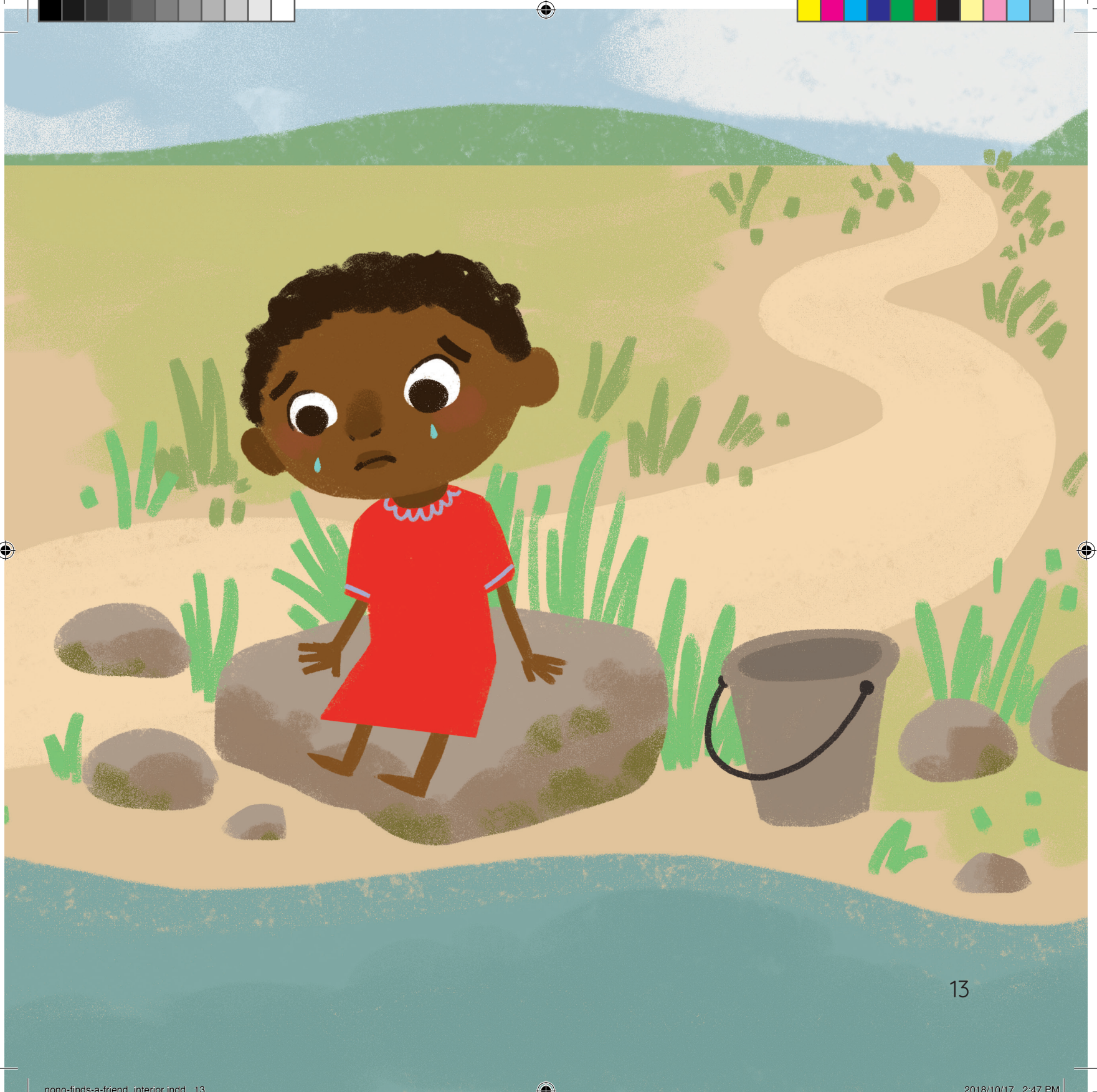




Nga matshelo Maemu a tshi vuwa u wana
Mupfufhi tshi si ho.

Maemu a tshi ya mulamboni a swika a dzula
n̂tha ha toambo a lila. “Vhuyai Mupfufhi
vhuyai! Vhuyai khonani yanga!”
Mupfufhi tshi sa vhuye.







Maemu a tshi vhuya mulamboni a rumiwa
u kaṅa mavhele. Mmane vha ri o lenga u
vhuya mulamboni. Maemu a dzhia tshithatha
a thoma u imba.

“Zwi ḁo guma lini u dzula ndi ndoṱhe?
Zwi ḁo guma lini u kiswa maḁi na u
lima masimu?”

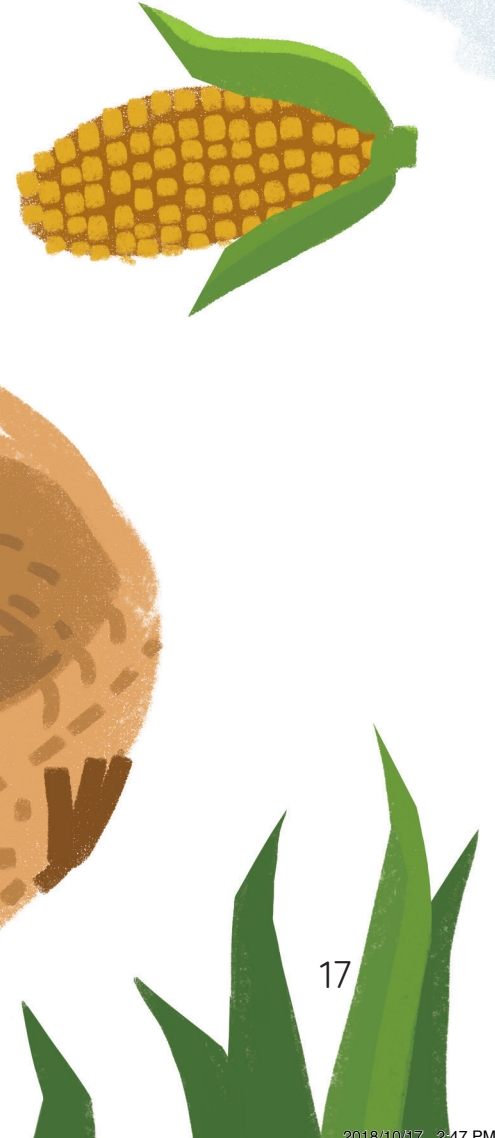






Maemu a imba o livha tsimuni ya mavhele.
Mavhele othe a thoma u tshina! Mavhele a
tshinatshina a tshi dzhena tshithathani nga
othe. “Mupfufhi ndi iwe ane a khou ita izwi
zwithu?” ndi Maemu a tshi vhudzisa.





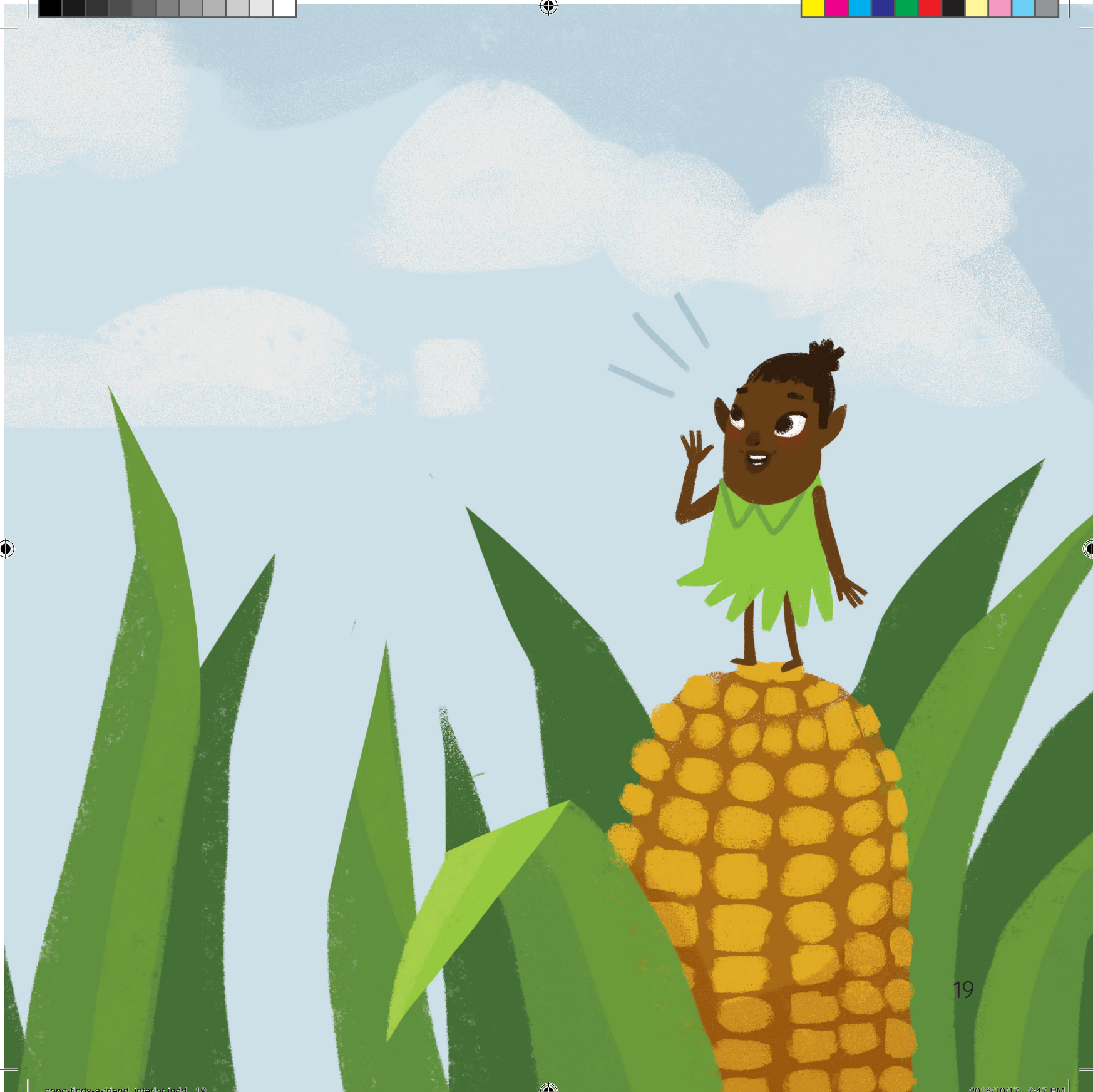


“Ee, Maemu!” hu pfala ipfi.

“Mupfufhi, ndi nga mini wo ntsia ndi ndothe,
ndo u tuvha,” ndi Maemu a tshi isa phanda.

“Ndi nga si dzule na iwe Maemu,
ndi tea u dzula henefha na muta wanga
ndi sa vhonali. Arali u tshi toda thuso,
u imbe ndi do da.”





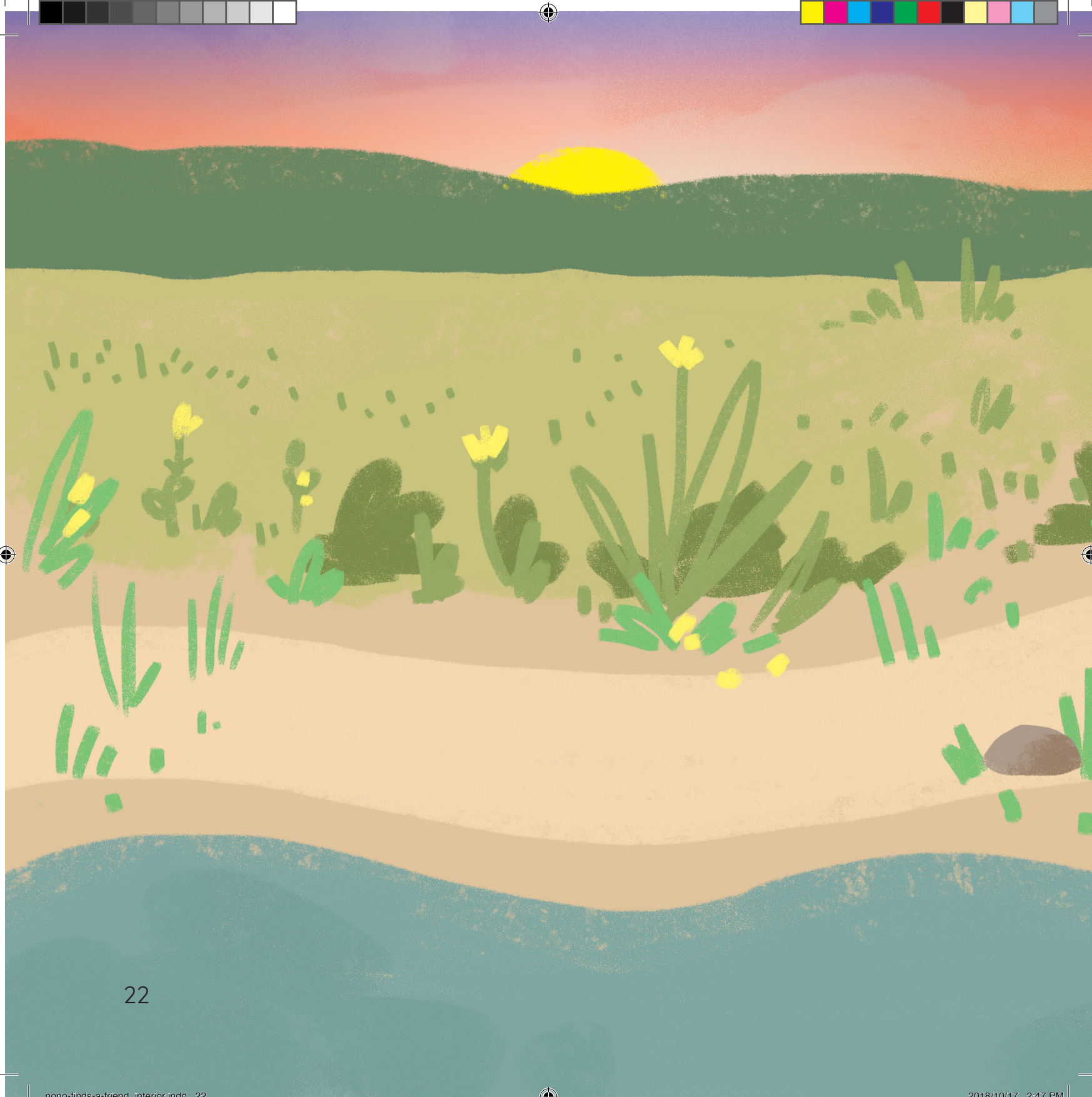


Maemu na Mupfufhi vha khadana.
Vhothe vha imba luimbo luswa.

“Zwino ndi tshifhinga tsha u wana khonani.
Ri ka madi rothe!
Ri lima rothe, tshifhinga tsho shanduka!”











Room to Read South Africa

1209 Francis Baard Street, The Gables, 1 Floor, Hatfield, Pretoria 0028, South Africa
www.roomtoread.org

Nga 2018, thandela ya REACH yo thusa Room to Read na khamphani dza u gandisa bugu kha u bveledza bugu dza 20 ntswa nga nyambo dza Afurika Tshipembe. Inwe ya bugu dzenedzi vha nayo zwanḁani zwavho! Inwe na inwe ya bugu idzi yo nwalwa nga Sepedi, siSwati, Xitsonga, Tshivenda na isiZulu. Bugu dzoḁhe dza 20 dzi hone kha nyambo idzo na kha English. U wana zwinzhi kha vha dalele onedayonebook.org.

Maemu u Wana Khonani

Nono Finds a Friend

Muḁalutshedzeli ndi Hulisani Olga Tshisevhe

Room to Read GSD ID: ZA-ABP-18-0039

ISBN: 978-1-928441-51-9

Bugu iyi yo ranga u gandiswa nga Indwa Publishers.

Heyi bugu yo thoma i kha Sepedi yo nwalwa nga Busi Maphumulo.

Muoli ndi Jess Jardim-Wedepohl

Mudzudzanyi ndi Jess Jardim-Wedepohl

Yo ḁolwa luambo nga Jocelyn Newmarch

nga thusedzo ya vha One Day One Book vho shelaho mulenzhe ngei Johannesburg nga ḁa 9 Fulwi 2018.

Arali vha tshi ḁoḁou renga bugu nnzhi dza bugu ino, kha vha kwame vhaganḁisi.

Indwa Publishers

Meredale, Johannesburg South, 2091

Matthew Jabulani Mngadi | 011 942-5389

Heyi thandela yo lambudzwa nga tshikwama tsha masheleni a Education for All Children (REACH) tshi re kha World Bank na vha Global Book Alliance khathihi na thusedzo i bvaho kha vha Muhasho wa Pfunzo dza Fhasi (Department of Basic Education).



Khophiraithi kana vhuḁe ha idzi bugu vhu zwanḁani zwa vhabveledzi vho bveledzaho tshipiḁa tshiḁwe na tshiḁwe tshadzo. Vho nanga uri dzi langiwe fhasi ha tshiteḁwa tsha ḁhanziela i no pfi Creative Commons Attribution 4.0. Zwine zwa amba uri bugu yoḁhe, i wela kha ḁhanziela yeneyo nthihi. Izwi zwi amba uri muḁwe na muḁwe a nga si thivhelwe u vhalo, u daunḁouda, u ḁalutshedzela, u gandisa na u i phaḁaladza bugu iyi. Arali vha tshi ḁoḁou shumisa tshipiḁa tshiḁwe na tshiḁwe tsha iyi bugu, vha tea u bula madzina a vhabveledzi vhayo.

