



Uphi Lulu?

Lencwadzi ya









Every child should own a hundred books by the age of five. To that end, Book Dash gathers creative professionals who volunteer to create new, African storybooks that anyone can freely translate and distribute. To find out more, and to download beautiful, print-ready books, visit bookdash.org.

Uphi Lulu?

(Where is Lulu?)

Illustrated by Clyde Beech

Written by Mohale Mashigo

Designed by Nkosingiphile Mazibuko

Edited by Lisa Treffry-Goatley

Translated by Manesi Kekana

with the help of the Book Dash participants in Cape Town on 14 April 2018.

ISBN: 978-1-776231-84-3

This work is licensed under a Creative Commons Attribution 4.0 Licence (<http://creativecommons.org/licenses/by/4.0/>). You are free to share (copy and redistribute the material in any medium or format) and adapt (remix, transform, and build upon the material) this work for any purpose, even commercially. The licensor cannot revoke these freedoms as long as you follow the following license terms:

Attribution: You must give appropriate credit, provide a link to the license, and indicate if changes were made. You may do so in any reasonable manner, but not in any way that suggests the licensor endorses you or your use.

No additional restrictions: You may not apply legal terms or technological measures that legally restrict others from doing anything the license permits.

Notices: You do not have to comply with the license for elements of the material in the public domain or where your use is permitted by an applicable exception or limitation.

No warranties are given. The license may not give you all of the permissions necessary for your intended use. For example, other rights such as publicity, privacy, or moral rights may limit how you use the material.





Uphi Lulu?



Clyde Beech Mohale Mashigo Nkosingiphile Mazibuko





“Hhayyi, bo!”







“Lulu! Sesikhatsi sekuhamba,”
kumemeta Make.







Uphi Lulu?
Angabe ungephasi kwasofa?
Angabe ubhace ngemuva
kwemakhethini.





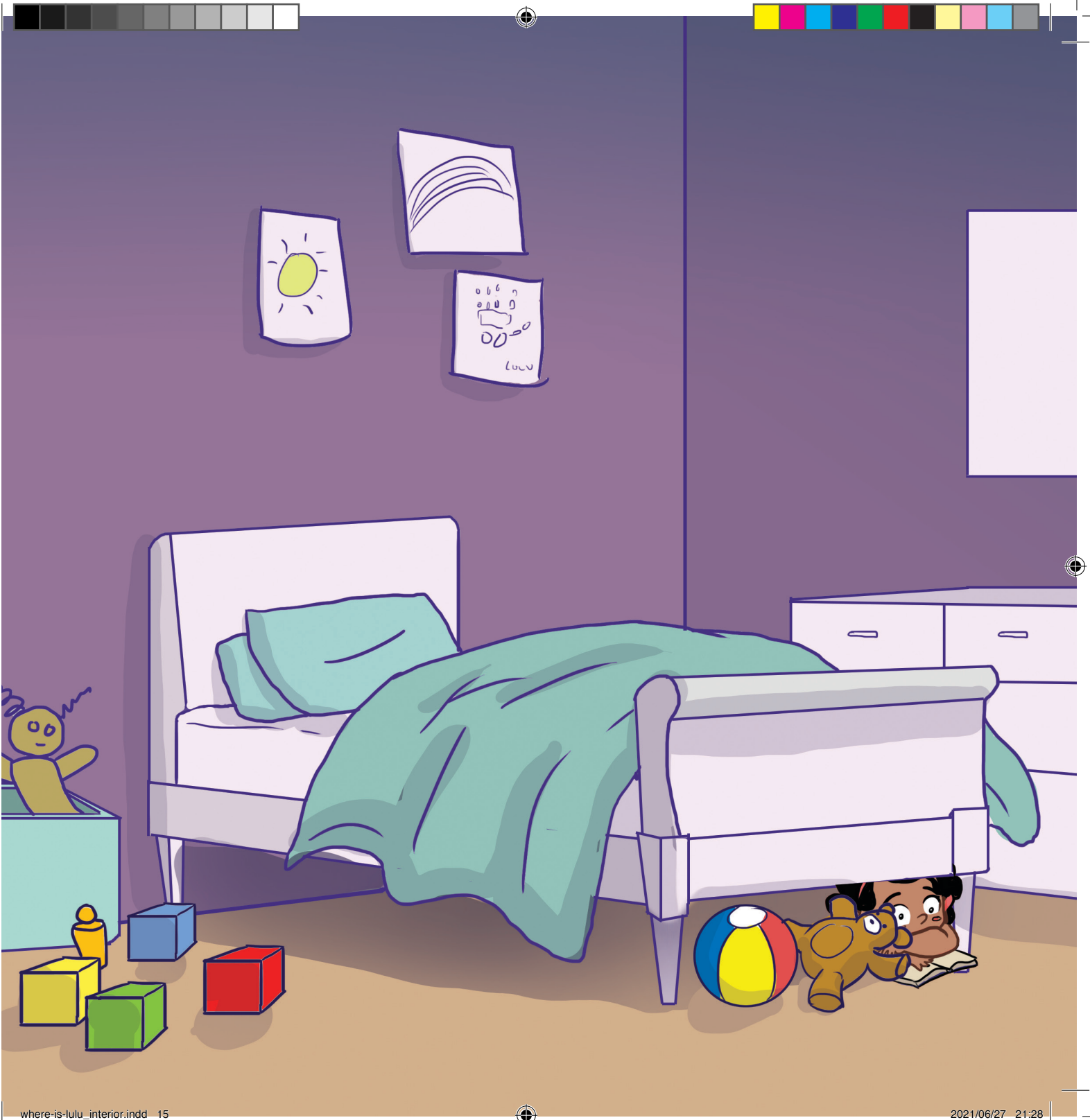


Uphi Lulu?
Angabe useceleni kwesitofu?
Angabe usekhabethini?





“Lulu! Sesikhatsi sekuhamba.
Ukuphi?” kumemeta Make.





“Ngakutfola!”

“Angifuni kuhamba mine!”





“Kufanele kutsi sihambe,”
kusho Make.

“Kepha ngiyitsandza
mbamba lena!”











“Ngiyitsandza mbamba lena.”





“Nalena futsi.”



“Nalena futsi.”

“Nalena futsi.”





“Uyabona? Ubuyisa tincwadzi
uphindze weboleke letinye
letinyenti.”

“YEYI!”







Uphi Lulu manje?







