



UPhumu owonwabileyo



NguMishumo Maphaha





UPhumu yintombazana eyonwabileyo.
Uyonwaba xa edlala nodade wabo uPhuluso.

Uyonwaba naxa edlala noDino ikati yakhe
emhlophe.





UPhumu wonwabile esikolweni.

Uyavuya xa umisi emcela afundele iklasi ibali ngokuvakalayo.

UDino akekho esikolweni ushiyekile.

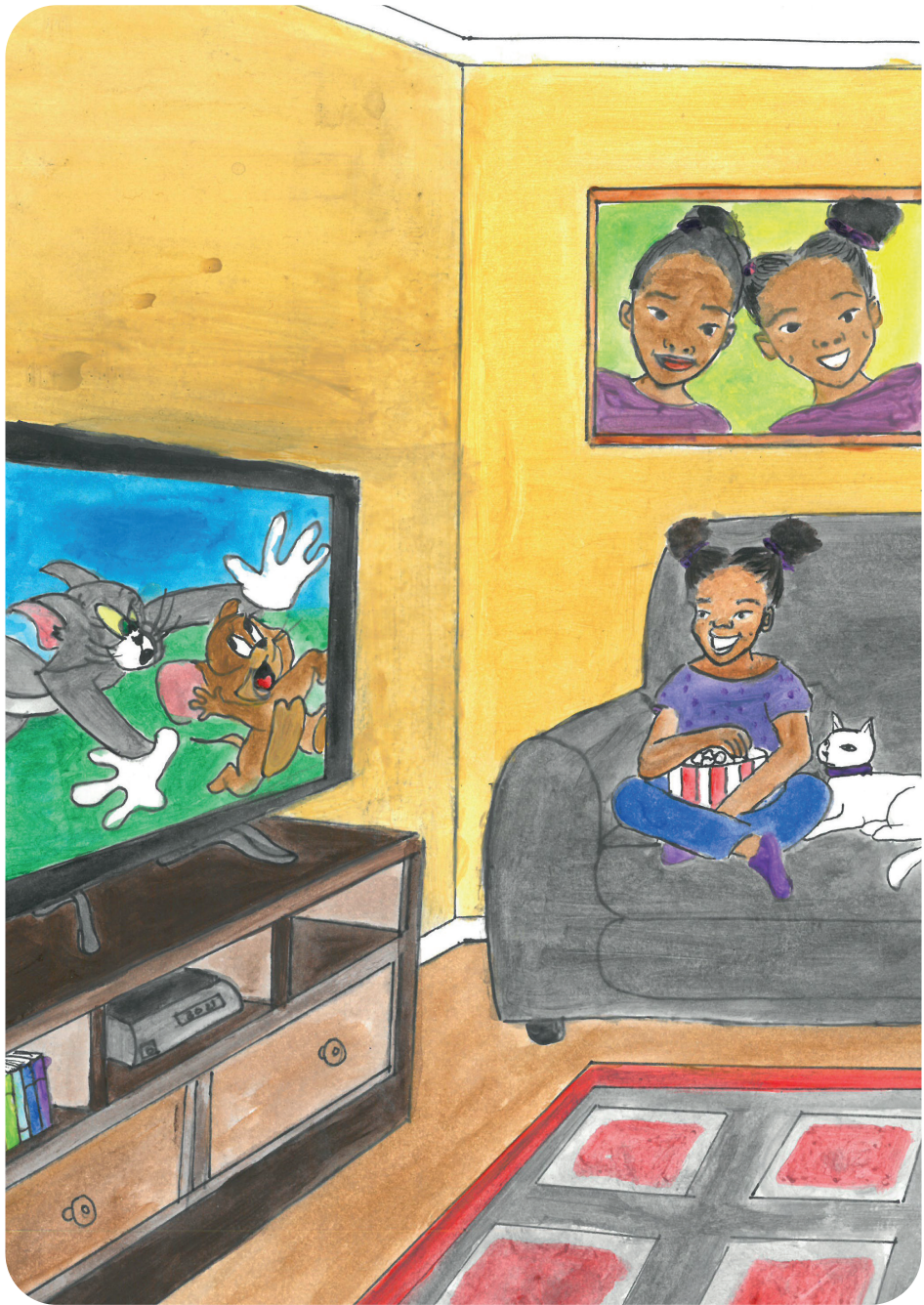




UPhumu uyonwaba xa ebukele oopopayi
kumabonakude.

UDino ubukela oopopayi naye.

UPhumu uhleka aqikileke.





UPhumu uyonwaba xa edlala epakini.
Uyakuthanda ukudlala koojingi.

UPhumu uqaphela uDino emthini.





UPhumu uyonwaba xa esiya ezivenkileni noPhuluso.

UMama ubathengela iimpahla zefashoni. Bobabini bathanda umbala omfusa.

UDino yena akekho evenkileni ushiyekile.

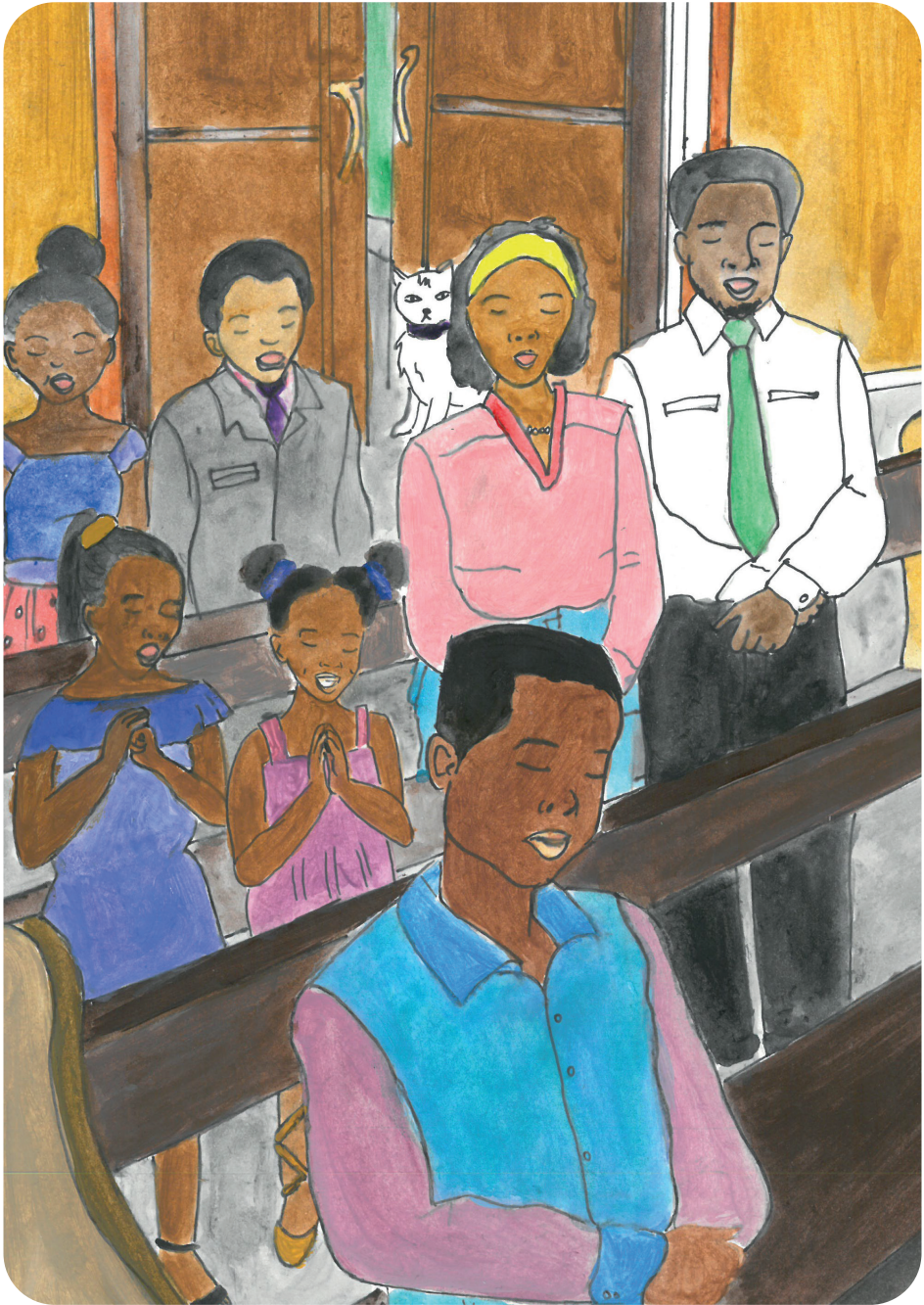




UPhumu uyonwaba xa esiya ecaweni.

Uyakuthanda ukucula nokuthandaza.

UDino umlinda ecaleni kwesango lokuphuma.





UPhumu uyonwaba xa usapho lwakhe lusitya kunye ngeeCawe.

Uyathanda ukutya inyama yenkukhu nerayisi. UDino naye uyayithanda inkukhu.





UPhumu yintombazana eyonwabileyo ngokwenene. Unobomi obonwabisayo.