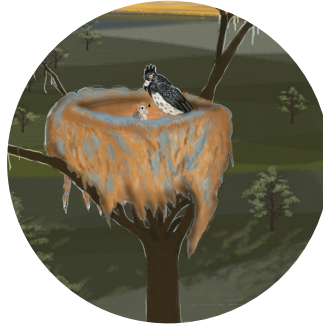




# Molemo wa phodiso



Room to Read





Morwesi ke lenong le le bothale la senatla. Morwesi o fofa kwa nokeng ya Lwamorwa.

O nna a fofafofela masimong a mabele. O fofa a batla dijo.





Morwesi o lwalelwa ke morwa. “Morwa wa ka o a lwala,” a bua a hutsafetse. O belaela ka bolwetse jwa morwa wa gagwe. “Ke dire eng?” Morwesi o a nagana.



“Ke tlaa morwala ke mo ise kwa ga Morwalelwa.  
Morwalelwa ke ngaka ya nnete. Morwalelwa o itse  
malwetse a mantsi.”





Morwalelwa o lekola morwa wa ga Morwesi.  
“Bolwetse jo bo kotsi,” ga bua Morwalelwa.”

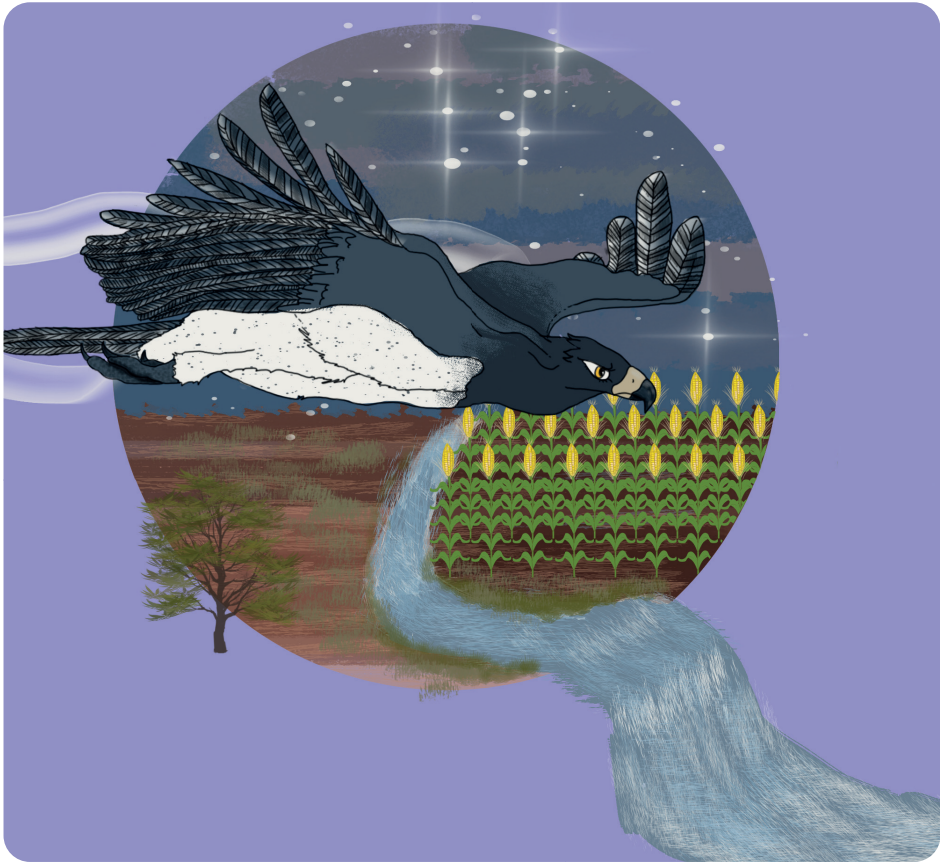
“Nka bona ke dirile eng?” ga botsa Morwesi.



Se se monate ke gore morwa o tla fola.

Go batlega medi ya sekanama. Molemo wa sekanama o kwa masimong.





Morwesi a fofela masimong ka lebelo.

Morwesi a bona setlhatsana. A nagana gore ke sekanama. E rile fa a kotama, a lemoga gore ga se sona. A fetela pele.



Molwedi, tsie, ya fofela letlapeng. “O batla eng fa?”

“Sekanama,” ga rialo lenong.

Molwedi a fofa, Morwesi a mo sala morago.







“Ijaa! Morwa wa ka o tla fola gompieno.”

“Ke bone molemo wa bolwetse bo.” A simolola go goga setlhare go batla medi.



Mmu o ne o omile, o le thata.



Morwesi a lwa le go goga sekanama.

Molwedi a re, “E re ke go thuse.”

Morwesi a lebelela Molwedi ka lenyatso. Morwesi le Molwedi ba epa setlhare mmogo.





Phaa! Morwesi a wa, a kanama le sekanama.  
Morwesi a goga sekanama ka dinala. Molwedi a  
kgokologa ka ditshego.



Ka bonakonako Morwesi a tsoga. A fofa ka lebelo a itumetse. Morwesi a fofela gae le sekanama.





Molwedi a sala a maketse. “Ijaa! Morwesi ga a na tebogo.” Tsie ya fofa ya tsamaya.



Morwesi a goroga kwa ga ngaka Morwalelwa. A apaya sekanama. A se tlogela sa fola. Morwesi a nosa morwa sekanama.





Morwa wa ga Morwesi a nwa setlhare a fola. Morwa wa ga Morwesi a tsoga bolaong.

A fofafofa ka boitumelo.



“Ijoo! Ke lebetse go leboga Molwedi,” ga bua Morwesi. Morwesi le morwa ba fofela masimong. Ba bona Molwedi mme ba mo leboga.

