



Imihambo nemasiko emaVenda



Mpho Witness Makwarela



Lona nguMukona. Yintfombatane
leneminyaka lesiphohlongo.

Lona nguMashudu. Mfana loneminyaka
leyimfica.



Batanikhombisa tindlela letahlukene
tetinfo letentiwa bafana nemantfombatane
emaVenda.



Mukona yintfombatane, ngako uma abingelela utsi “Aa!”.

Uma ubingelela yena, nakhona uvuma atsi “Aa!”.

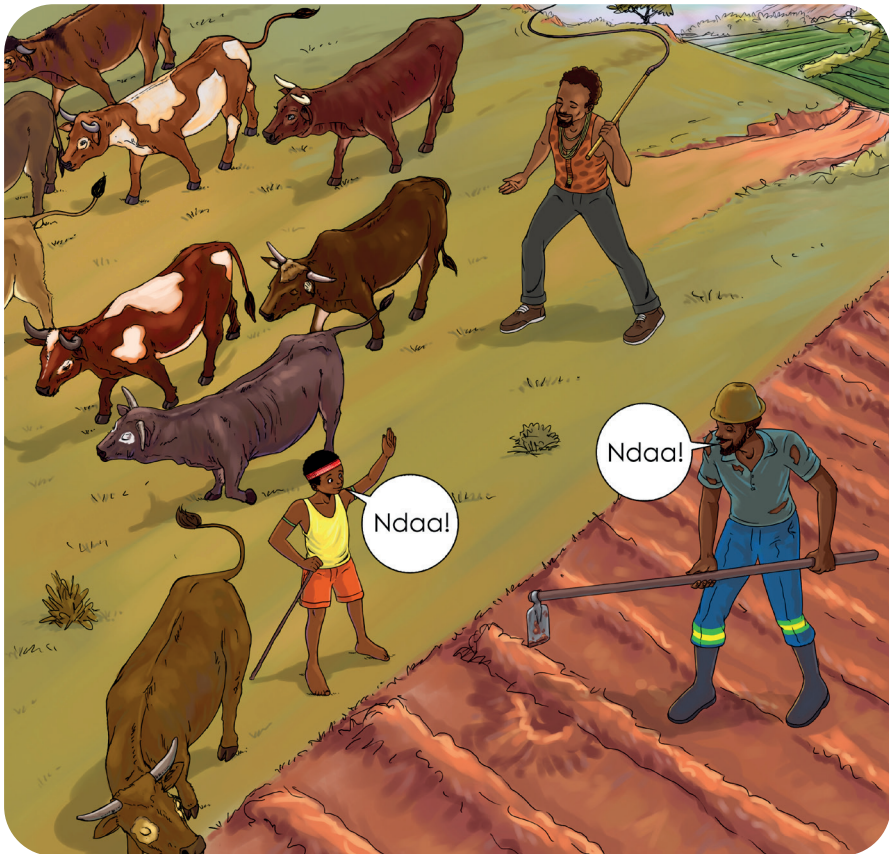


Ngiyo indlela lakhombisa ngayo kuhlonipha nekutiphatsa.



Mashudu ngumfana, ngako uma abingelela utsi “Ndaa!”.

Uma ubingelela yena, nakhona uvuma atsi “Ndaa!”.



Wenta loku kukhombisa inhlonipho njengobe Mukona enta.



Uma Mukona naMashudu babingelela nobe banika bantfu labadzala kudla, bagcamisa inhlonipho.



Emantfombatane ayakhotsama, bafana bayaguca. Loku kukhombisa indlela yekutiphatsa kahle.



Dzadzewabo lomdzala waMukona
usesikolweni setemasiko lebasibita ngekutsi
i-khombani.



Make wabo utsi yindzawo lefundzisa
emantfombatane kutsi aphantse njani imindeni
yawo, uma asashadile. Babuye bafundze
nekupheka.



Bhuti lomdzala waMashudu ubuyile esikolweni sasehlatsini lebasibita ngekutsi i-*mulani*. Bonkhe bafana bagcobise libumba lelibovu.



Babe wabo utsi kulapho bafana bafundza khona ngekuba ngemadvodza. Bafundza nekutsi bayiphatse njani imindeni yabo ngalelinye lilanga.



EmaVenda atiwa ngekusindza tindvonga tetindlu tawo naphasi ngebulongo betinkhomo. Loku kwenta tindlu tabo tibe tihle.



Mukona naMashudu bajabulela kusita.



Bafana bemaVenda bagidza
i-tjikona. Bagidza ngetikhatsi letikhethsekile
nome nabatijabulele nje.



Mashudu ngumfana lomncane kunabo
bonkhe, kepha ugidza kahle i-tjikona!
Ngumgidvo lojabulisako!



Emantfombatane emaVenda agidza i-domba.
Agidza i-domba ebukhosini ngemalanga
lakhetsekile.



Mukona yintfombatane lencane kunawo
onkhe, kepha ugidza kahle *idomba!*

Ngumgidvo lojabulisako!



Bafana nemantfombatane banemgidvo
munye lofanako lebawugidza bonkhe.
Bawubita ngekutsi yi-*tjifase*.

Lomgidvo bawenta bagcoke imvunulo yabo
yesintfu, lebayibita ngekutsi i-*mingwenda*.



Bonkhe bantfu bashayela Mukona
naMashudu tandla uma bagidza i-*tjifase*!



EmaVenda bantfu labahloniphako
labanemasiko lamahle.



Mukona naMashudu bayatigcabha ngekuba
ngemaVenda!